

*Faint, illegible handwriting, likely bleed-through from the reverse side of the page.*

( 890 )

VICTORIA.

*The Marmi Hoof Road*

RETURN of DISEASES which have been most prevalent in

during the year 1855:

No.	Brain and Nerves.	Circulatory Organs.	Respiratory Organs.	Alimentary Canal.	Urinary Organs.	Hepatic.	Eyes.	Skin.	Cellular Texture.	Children.	Fevers.	Rheumatic.	Dropsy.	Veneral.	Scorbutic.	Uterine Organs.	Ulcers.	Pregnancy and Parturition.	Wounds and Accidents.	Cancer.	Casualties.	No.	Total No. of Cases tried.	
1	1	2	11	9	1	"	1	"	6	"					5	3	"	6	"	7	"	"	8	60

*John Williams  
P. O. Surgeon  
Williams Lane*

52/1252

( 168 )

( 892 )

56/166

[ 893 ]

**GAOLS AND PRISONERS.**

*Hulk Gipsandw*

1855

[ 894 ]

RETURN of the GAOLS and HOUSES of CORRECTION, and of the Number

NAME OF THE PRISON, AND WHERE SITUATED.	1. Number of Prisoners the Prison is capable of containing in separate Cells.	2. Number of Prisoners the Prison is capable of containing, where more than one Prisoner sleeps in one Cell.	3. Number of Prisoners																
			Felons.																
			Tried.				Untried.												
			Whites.		Blacks or Colored Persons.		Whites.		Blacks or Colored Persons.										
			M.	F.	M.	F.	M.	F.	M.	F.									
<i>Hulk Lyonsdown</i>	<i>14</i>	<i>300</i>	<i>140</i>	<i>"</i>	<i>1</i>	<i>"</i>	<i>"</i>	<i>"</i>	<i>"</i>	<i>"</i>	<i>"</i>	<i>"</i>	<i>"</i>	<i>"</i>	<i>"</i>	<i>"</i>	<i>"</i>	<i>"</i>	<i>"</i>
<i>Hobsons Bay</i>																			
TOTALS ... ..	<i>14</i>	<i>300</i>	<i>140</i>	<i>"</i>	<i>1</i>	<i>"</i>	<i>"</i>	<i>"</i>	<i>"</i>	<i>"</i>	<i>"</i>	<i>"</i>	<i>"</i>	<i>"</i>	<i>"</i>	<i>"</i>	<i>"</i>	<i>"</i>	<i>"</i>

[ 895 ]

of PRISONERS confined therein for the Year ending *31<sup>st</sup> December* 1855.

<i>on 31<sup>st</sup> December</i>												4. Total Number of Prisoners in Confinement at Michaelmas, 1855.				5. Greatest Number of Prisoners in Confinement at any one time in the Year.			
<i>in Confinement at Michaelmas, 1855</i>												<i>on 31<sup>st</sup> Dec</i>							
Misdeemeanors.								Debtors.											
Tried.				Untried.				Whites.		Blacks or Colored Persons.		Whites.		Blacks or Colored Persons.		Whites.		Blacks or Colored Persons.	
Whites.		Blacks or Colored Persons.		Whites.		Blacks or Colored Persons.		Whites.		Blacks or Colored Persons.		Whites.		Blacks or Colored Persons.		Whites.		Blacks or Colored Persons.	
M.	F.	M.	F.	M.	F.	M.	F.	M.	F.	M.	F.	M.	F.	M.	F.	M.	F.	M.	F.
<i>144</i>	<i>"</i>	<i>"</i>	<i>"</i>	<i>"</i>	<i>"</i>	<i>"</i>	<i>"</i>	<i>"</i>	<i>"</i>	<i>"</i>	<i>"</i>	<i>290</i>	<i>"</i>	<i>1</i>	<i>"</i>	<i>293</i>	<i>"</i>	<i>1</i>	<i>"</i>
<i>144</i>	<i>"</i>	<i>"</i>	<i>"</i>	<i>"</i>	<i>"</i>	<i>"</i>	<i>"</i>	<i>"</i>	<i>"</i>	<i>"</i>	<i>"</i>	<i>290</i>	<i>"</i>	<i>1</i>	<i>"</i>	<i>293</i>	<i>"</i>	<i>1</i>	<i>"</i>



QUESTIONS.

ANSWERS.

1. General Description of the Prison; whether Common Gaol, House of Correction, or otherwise? (To be accompanied by a Ground Plan of the Buildings, &c.)

*A House of about 500 Jons. The Prison is formed by fixing Wards on the two decks - ~~a Plan of Deck is appended~~. A Penal Mill and House of Correction*

2. Under whose jurisdiction and superintendence; and what measures are adopted for securing the Visitation of the Prison by the Local Magistrates or other Authorities? (A Copy of the Rules and Regulations to be forwarded with the Return.)

*Under the jurisdiction of the Inspector General of Penal Establishments and the supervision of a Superintendent and other Officers. A Visiting Justice attends Weekly and the Local Magistrates and other persons have access at any time.*

3. Number of Officers, and how appointed? Do all the Officers reside in the Prison? Are Female Prisoners attended by Female Officers exclusively?

*The Regulations are similar to those at the Penitentiary and "Hull" Prison. Eight appointed by His Excellency the Governor and 26 Subordinates by the Inspector General - all the Officers reside on board the "Hull" except 2 Officers of Labor*

4. Number of Classes, Divisions or Wards, Day-rooms, Work-rooms, and Airing-yards (with reference to Plan); and whether the same can be extended or increased?

*There are sixteen Wards and the Exercise yard, which cannot be extended*

5. Number of Sleeping-cells, Solitary or Dark-cells, &c.; and if any are below ground?

*Four Solitary Cells built forward, on the lower deck, but no sleeping or dark cells*

QUESTIONS.

ANSWERS.

6. Dietary or Weekly Allowance, and Weekly Cost per head for the different descriptions of Prisoners? And under what system and control the Food, Medicine, and Clothing for the Prisoners is contracted for, or otherwise provided?

*Free Ration  
Bread - 4 lb  
Meat 1/2 "  
Potatoes 1/2 "  
Maize 3/2 "  
Sugar 1/2 oz  
Salt 1/4 "  
Soap 3/2 "  
Cost per head 1/8 3/4*

*The sick receive half the above Ration -  
The Solitary Ration is 1/2 lb Bread. Cost 2/6 1/2*

7. Allowance of Clothing and Bedding, and Cost per head?

*Bedding 1 Rug. 2 Blankets & 1 Hammock.  
At an average cost of £3.18. per head.*

8. Hours of Labor and Exercise?

*The Tools, medicine, & clothing are contracted for through the Colonial Storekeeper. The prisoners are allowed - In summer, 1 duck foot, 1 duck trousers, 1 shirt, 1 pair boots or shoes, 1 straw hat. In winter, 1 grey jacket, 1 pair trousers, 1 shirt, 1 cap, 1 pair boots. In summer Labor commences at 5.45 a.m. and terminates at 5.30 p.m. Winter from 7.45 a.m. to 4 p.m. allowing one hour for dinner.*

9. Description of Employment, and Hard Labor?

*Quarrying & breaking Stone, and conveying Stone in trucks along the Tramway for formation of a Battery and extension of the Government Jetty.*

10. Amount of Earnings, and how applied; in what proportion to the Prisoners, to the Officers, or the Fund for the Maintenance of the Prison?

*Actual pecuniary Return £1643.10.5 which has been paid into the Colonial Treasury. Estimated value of the Labor performed £4329.5.8*

11. Whether the Classification directed by the Colonial Act has been observed: if not, for what reasons; and what measures have been taken to remedy this defect?

*Seamen undergoing sentences for breaches of the Merchant Marine Act are confined here, no other classification is carried out.*

12. Are convicted Prisoners prohibited from receiving Visits or Letters, or any articles of Food or Clothing from their Relatives or Friends: if not, under what restrictions?

*Letters are allowed to be received by prisoners through the Officer in charge who first inspects them. Gifts from Relations or friends only on order from the Inspector General, no articles of clothing are allowed to be received except by express permission, and then flannels only. Any extra food is strictly prohibited.*

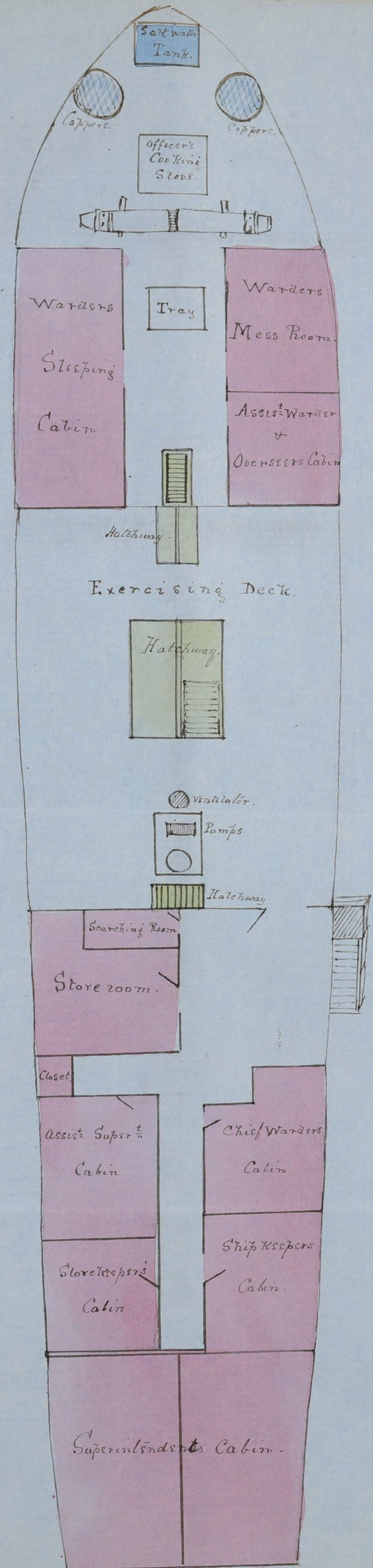
( 900 )  
RETURN of the GAOLS, &c.—continued.

- | QUESTIONS.  | ANSWERS.   |
|---|--|
| 13. Is there a Chapel in the Prison, or suitable Apartment for the performance of Religious Services? How are the Prisoners separated therein?                          | <i>There is not, but Service is performed on the deck</i>  |
| 14. What Duties are performed by the Chaplain? What provision is made for the Instruction of the Prisoners; and are they supplied with Bibles and other suitable Books? | <i>Divine Service on Sunday afternoon, A Religious Instructor visits for the instruction of the prisoners—Bibles and suitable Books are supplied</i> |
| 15. Are Dissenting Ministers allowed to have access to the Prisoners; and if so, at what times, and under what restrictions?  | <i>Yes, on Sunday forenoon for the purpose of Preaching. They are not allowed otherwise to communicate with the prisoners.</i>                       |
| 16. What Duties are performed by the Surgeon? Are separate Buildings or Apartments provided for the Sick?   | <i>Visits the Sick almost daily for the general supervision of the Sick. Two wards are set apart for their use</i>                                   |
| 17. What diseases have been most prevalent during the Year (in reference to Columns 10 and 11, Return No. 1)?   | <i>Veneral, Alimentary Canals, Cellular texture and Respiratory Organs.</i>  |
| 18. Reasons for non-employment of Prisoners (in reference to Column 8)?   | <i>Sundays, Holydays, Sick, Solitary Confinement, and Wet days.</i>  |

( 901 )  
RETURN of the GAOLS, &c.—continued.

- | QUESTIONS.   | ANSWERS.  |
|--|---|
| 19. Reasons for Punishments by Whipping, Irons, Solitary Confinement, or otherwise?  | <i>Breaches of the Regulations chiefly punished by Solitary Confinement, by order of the Vestry Justice who inflicts such description of punishment, as he may deem most efficacious<br/>There have been no whippings</i>   |
| 20. Is there any Insane Person in confinement? State his or her Name and Age, and for what offence committed? How long has he or she been in confinement; and is such Person separated from the other Prisoners? | <i>None</i>   |
| 21. Are any, and what fees demanded of Debtors, or of any other Prisoners, either at their admission to or discharge from the Gaol?  | <i>None</i>   |
| 22. General Observations.  | <i>Being a Hospital Street a great number of the Sick are confined Invalids, besides a number of Cripples who are seldom if ever out of the Street.<br/>This Street has been occupied since the 1<sup>st</sup> April only, there is nothing particularly worthy of note connected with it.</i><br><i>John Dug<br/>Inspector General &amp;c.</i> |

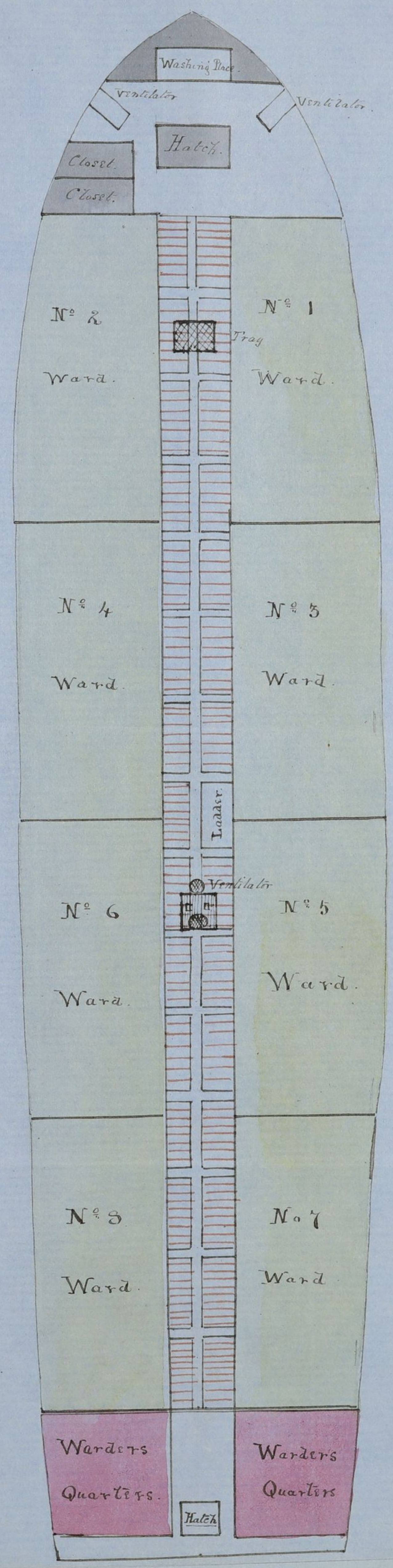
( 902 )



Ground plan of the upper deck of the Trawl Buick "Lycander" on a scale of 10 feet to the inch.

Charles R. Payne  
Superintendent

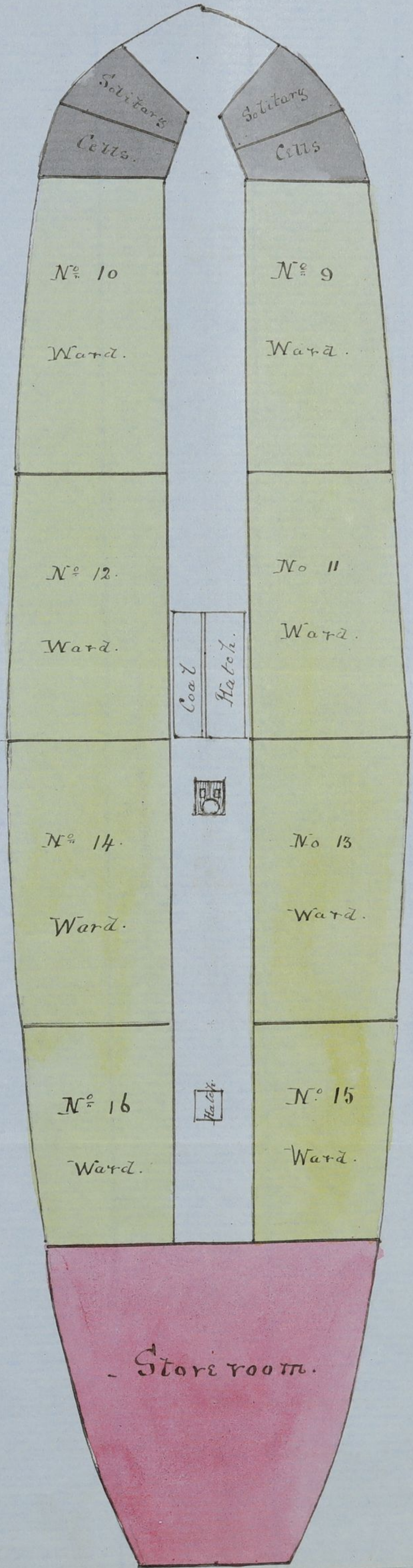
January 24<sup>th</sup> 1856.



Ground Plan of the Main Deck of the Suez Canal Ship "Sphinx"  
 on a scale of 10 feet to the inch

Arthur B. Sayre  
 Superintendent

January 24<sup>th</sup> 1856.



Ground Plan of the Tower Deck of the Prussel Street Lyceum  
 on a scale of 10 feet to the inch

Charles B. Payne  
 Superintendent

January 24<sup>th</sup> 1856.

VICTORIA.

The *St. Andrew's* Squadron

during the year 1855.

RETURN of DISEASES which have been most prevalent in

Brain and Nerves.	No.	12
Circulatory Organs.	No.	13
Respiratory Organs	No.	14
Alimentary Canal.	No.	211
Urinary Organs.	No.	16
Hepatic.	No.	4
Eyes.	No.	36
Skin.	No.	14
Cellular Texture.	No.	121
Children.	No.	12
Fevers.	No.	11
Rheumatic.	No.	8
Dropsy.	No.	2
Veneral.	No.	312
Scorbutic.	No.	8
Uterine Organs.	No.	12
Ulcers.	No.	4
Pregnancy and Parturition.	No.	"
Wounds and Accidents.	No.	41
Cancer.	No.	"
Casualties.	No.	"
Existence.	No.	14
Total No. of Cases tried.	No.	1066

*John Williams*  
*P. Longman*  
*Williams Turner*

2821/25

(203)

( 904 )

56/165

[ 905 ]

**GAOLS AND PRISONERS.**

— *Hulst "Deborah"* —

— 1855 —

*ln*

*m*

[906]

RETURN of the GAOLS and HOUSES of CORRECTION, and of the Number

NAME OF THE PRISON, AND WHERE SITUATED.	1. Number of Prisoners the Prison is capable of containing in separate Cells.	2. Number of Prisoners the Prison is capable of containing, where more than one Prisoner sleeps in one Cell.	3. Number of Prisoners															
			Felons.															
			Tried.				Untried.											
			Whites.		Blacks or Colored Persons.		Whites.		Blacks or Colored Persons.									
M.	F.	M.	F.	M.	F.	M.	F.											
<i>Hutch Debora's</i>	"	150	"	"	"	"	"	"	"	"	"	"	"	"	"	"	"	"
<i>Hobsons Bay</i>																		
TOTALS ...		150	"	"	"	"	"	"	"	"	"	"	"	"	"	"	"	"

[907]

of PRISONERS confined therein for the Year ending *31<sup>st</sup> December* 1855.

<i>on 31<sup>st</sup> Decr</i> in Confinement at Michaelmas, 1855												4. Total Number of Prisoners in Confinement at Michaelmas, 1855 <i>on 31<sup>st</sup> Decr. 1855</i>				5. Greatest Number of Prisoners in Confinement at any one time in the Year.			
Misemeanors.						Debtors.		Whites.		Blacks or Colored Persons.		Whites.		Blacks or Colored Persons.					
Tried.			Untried.			Whites.		Blacks or Colored Persons.		Whites.		Blacks or Colored Persons.		Whites.		Blacks or Colored Persons.			
Whites.		Blacks or Colored Persons.	Whites.		Blacks or Colored Persons.	Whites.		Blacks or Colored Persons.		Whites.		Blacks or Colored Persons.		Whites.		Blacks or Colored Persons.			
M.	F.	M.	F.	M.	F.	M.	F.	M.	F.	M.	F.	M.	F.	M.	F.	M.	F.		
"	"	"	"	"	"	"	"	"	"	"	"	"	"	"	"	152	28		
"	"	"	"	"	"	"	"	"	"	"	"	"	"	"	"	152	28		
"	"	"	"	"	"	"	"	"	"	"	"	"	"	"	"	152	28		



- | QUESTIONS.   | ANSWERS.   |
|--|--|
| 1. General Description of the Prison; whether Common Gaol, House of Correction, or otherwise? (To be accompanied by a Ground Plan of the Buildings, &c.)   | <i>Was a House of Correction and Penal House, but as it is not now occupied further description is unnecessary.</i>  |
| 2. Under whose jurisdiction and superintendence; and what measures are adopted for securing the Visitation of the Prison by the Local Magistrates or other Authorities? (A Copy of the Rules and Regulations to be forwarded with the Return.) | <i>The Inspector General of Penal Establishments, and under the immediate charge of a Superintendent. A Visiting Justice attended regularly every week, and the local magistrates and other authorized persons had access.</i> |
| 3. Number of Officers, and how appointed? Do all the Officers reside in the Prison? Are Female Prisoners attended by Female Officers exclusively?  | <i>Two Officers appointed by His Excellency the Governor and 22 Subordinates by the Inspector General. All resided on board.</i>   |
| 4. Number of Classes, Divisions or Wards, Day-rooms, Work-rooms, and Airing-yards (with reference to Plan); and whether the same can be extended or increased?   | <i>Wards 3. Exercising Deck 1 - No Workshops.</i>  |
| 5. Number of Sleeping-cells, Solitary or Dark-cells, &c.; and if any are below ground?   | <i>2 Solitary Cells. No sleeping or Dark Cells -</i>   |

- | QUESTIONS.   | ANSWERS.   |
|--|--|
| 6. Dietary or Weekly Allowance, and Weekly Cost per head for the different descriptions of Prisoners? And under what system and control the Food, Medicine, and Clothing for the Prisoners is contracted for, or otherwise provided? | <i>Full Rations. 4 lbs Bread, 4 lbs Meat 4 lbs Potatoes, 3 1/2 lbs Maise Meal, 1/3 lb Sugar 3/2 lbs Soap, 1/2 lb Salt. Cost 1/10 1/4 each per week. Sick. Half the above Rations. Solitary 4 lbs Bread Cost 2/0 1/2 per Week. Contracted for annually under the Colonial Surgeons.</i> |
| 7. Allowance of Clothing and Bedding, and Cost per head?   | <i>1 Pair duck trousers. 1 couple fustian, 1 Straw Hat. 1 Grey Sacket. 1 Grey Trowsers 1 Grey Cap 2 Shirts &amp; 2 pair Boots or Shoes - Each Prisoner is allowed 1 Ruf. 3 Blankets &amp; 1 Hammock. Average Cost £14. 2 -</i>   |
| 8. Hours of Labor and Exercise?  | <i>Hours of labor - Longest day 11 1/4 hours<br/>" " Shortest " " 7 3/4 " "</i>  |
| 9. Description of Employment, and Hard Labor?  | <i>At the commencement of the Year a few Seamen were employed unloading Ships in the Bay, but in the demand in a short time entirely ceased. The other works were Quarrying, Breaking Stones, &amp;c.</i>  |
| 10. Amount of Earnings, and how applied; in what proportion to the Prisoners, to the Officers, or the Fund for the Maintenance of the Prison?  | <i>The estimated value of the labor performed was £404. 2. 0 and the actual pecuniary return to the amount of £376 0 - was paid into the Treasury to the credit of the General Revenue.</i>  |
| 11. Whether the Classification directed by the Colonial Act has been observed: if not, for what reasons; and what measures have been taken to remedy this defect?  | <i>There is no Colonial Act on this subject. but the Seamen were separated from the Penal Prisoners.</i>   |
| 12. Are convicted Prisoners prohibited from receiving Visits or Letters, or any articles of Food or Clothing from their Relatives or Friends: if not, under what restrictions?   | <i>No persons were allowed to see the prisoners nor were they allowed to receive letters unless by the sanction of the Inspector General. Friends only were permitted in a addition to the ordinary prison clothing.</i>   |

( 912 )  
RETURN of the GAOLS, &c.—continued.

- | QUESTIONS.  | ANSWERS.   |
|---|--|
| 13. Is there a Chapel in the Prison, or suitable Apartment for the performance of Religious Services? How are the Prisoners separated therein?                          | <i>There was no Chapel, but Divine service was performed on deck or in a Ward as the weather permitted, the Prisoners were not separated</i> |
| 14. What Duties are performed by the Chaplain? What provision is made for the Instruction of the Prisoners; and are they supplied with Bibles and other suitable Books? | <i>Performed Divine service on Sunday, and visited the prisoners at intervals. They were provided with Bibles and suitable Books,</i>        |
| 15. Are Dissenting Ministers allowed to have access to the Prisoners; and if so, at what times, and under what restrictions?  | <i>Dissenting Ministers occasionally visited and were required simply to confine themselves to Religious observances.</i>                    |
| 16. What Duties are performed by the Surgeon? Are separate Buildings or Apartments provided for the Sick?   | <i>Visited the sick every second day or often if necessary. There was not a separate apartment for the sick</i>                              |
| 17. What diseases have been most prevalent during the Year (in reference to Columns 10 and 11, Return No. 1)?   | <i>The prevalent disease was of the Cellular texture</i>   |
| 18. Reasons for non-employment of Prisoners (in reference to Column 8)?   | <i>Sundays, Holidays, Wet days, Sick, Solitary Confinement, &amp;c.</i>  |

( 913 )  
RETURN of the GAOLS, &c.—continued.

- | QUESTIONS.   | ANSWERS.  |
|--|---|
| 19. Reasons for Punishments by Whipping, Irons, Solitary Confinement, or otherwise?  | <i>The punishments were inflicted by the Vestry Justice principally for breaches of the Regulations &amp; were awarded as those most likely to prove efficacious —</i>                        |
| 20. Is there any Insane Person in confinement? State his or her Name and Age, and for what offence committed? How long has he or she been in confinement; and is such Person separated from the other Prisoners? | <i>Nile</i>   |
| 21. Are any, and what fees demanded of Debtors, or of any other Prisoners, either at their admission to or discharge from the Gaol?  | <i>Nile</i>   |
| 22. General Observations.  | <i>In consequence of certain necessary reductions in the expenditure the prisoners were removed from this Gaol to the Dispensary in the month of March and it has not since been occupied</i> |

*John Price*  
*Inspector General, &c.*

(914)

*[Faint, illegible handwriting on the left page]*

VICTORIA.

*The "Gull's Debarah"*

during the year 1855.

RETURN of DISEASES which have been most prevalent in

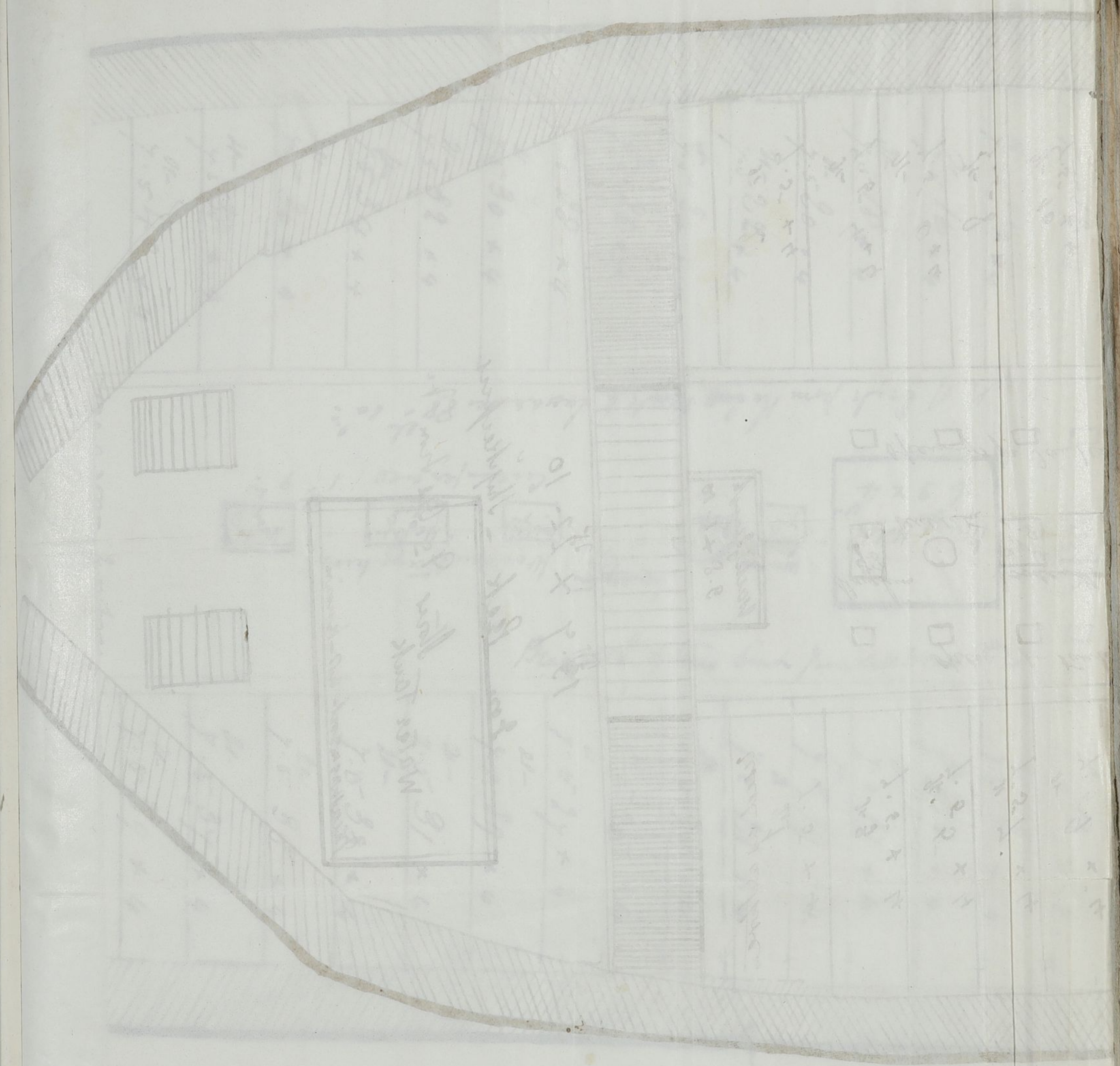
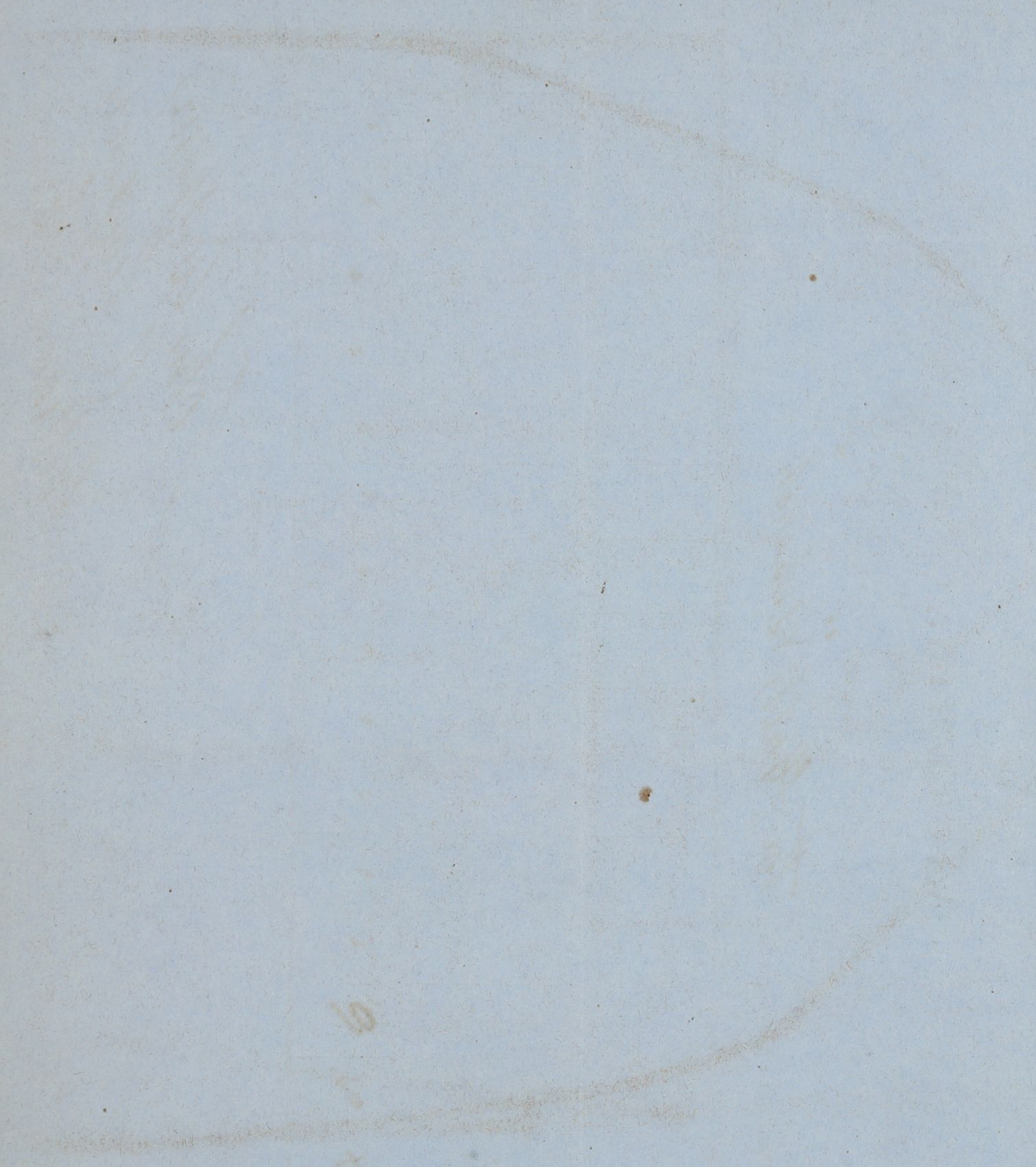
Brain and Nerves.	No.	1
Circulatory Organs.	No.	1
Respiratory Organs.	No.	6
Alimentary Canal.	No.	6
Urinary Organs.	No.	3
Hepatic.	No.	"
Eyes.	No.	4
Skin.	No.	2
Cellular Texture.	No.	10
Children.	No.	"
Fevers.	No.	"
Rheumatic.	No.	"
Dropsy.	No.	"
Veneral.	No.	"
Scorbutic.	No.	"
Uterine Organs.	No.	"
Ulers.	No.	"
Pregnancy and Parturition.	No.	"
Wounds and Accidents.	No.	"
Cancer.	No.	"
Casualties.	No.	"
	No.	7
<i>Belknap</i>	No.	7
Total No. of Cases tried.	No.	40

*John Williams  
P. Ferguson  
Williams Gunn*

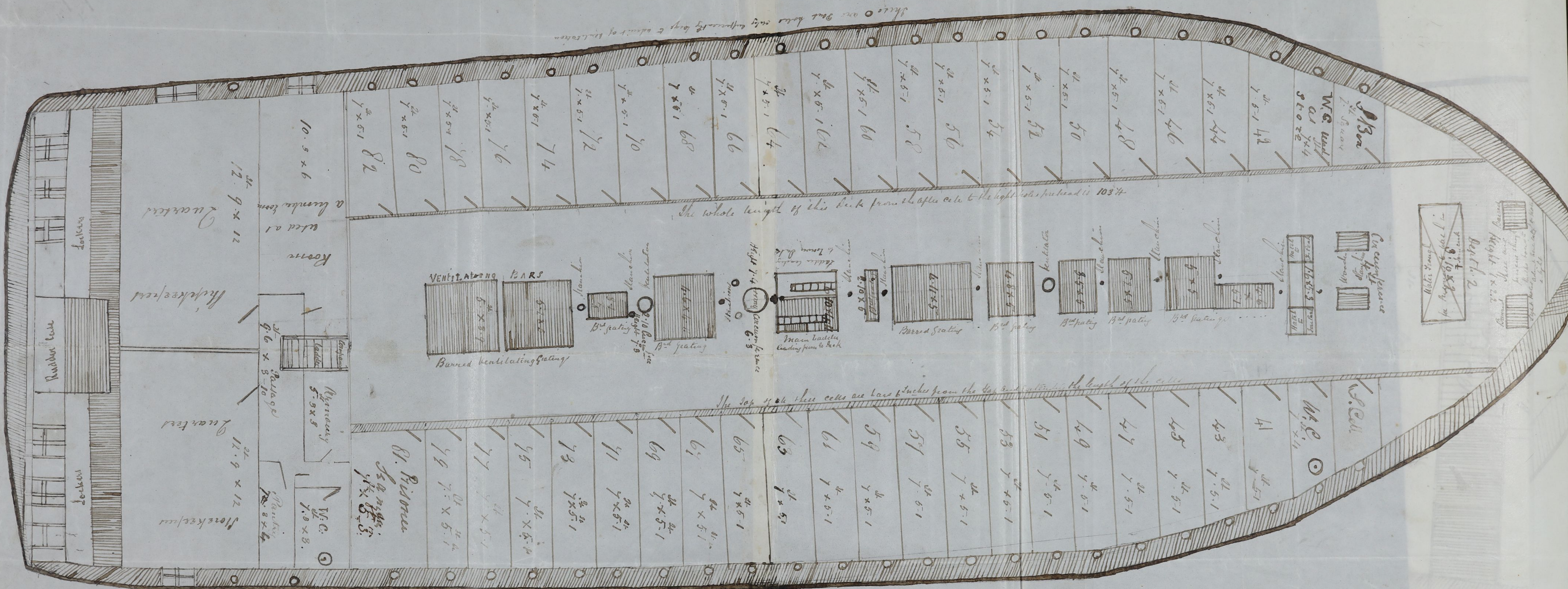
(915)

50/1252

( 916 )







There are 200 holes in the deck & 200 holes in the bulkhead

The whole length of this deck from the after bulkhead to the light hole is 103.4

The top of all these cells are 6 inches from the top of the bulkhead to the height of the cells

Plan

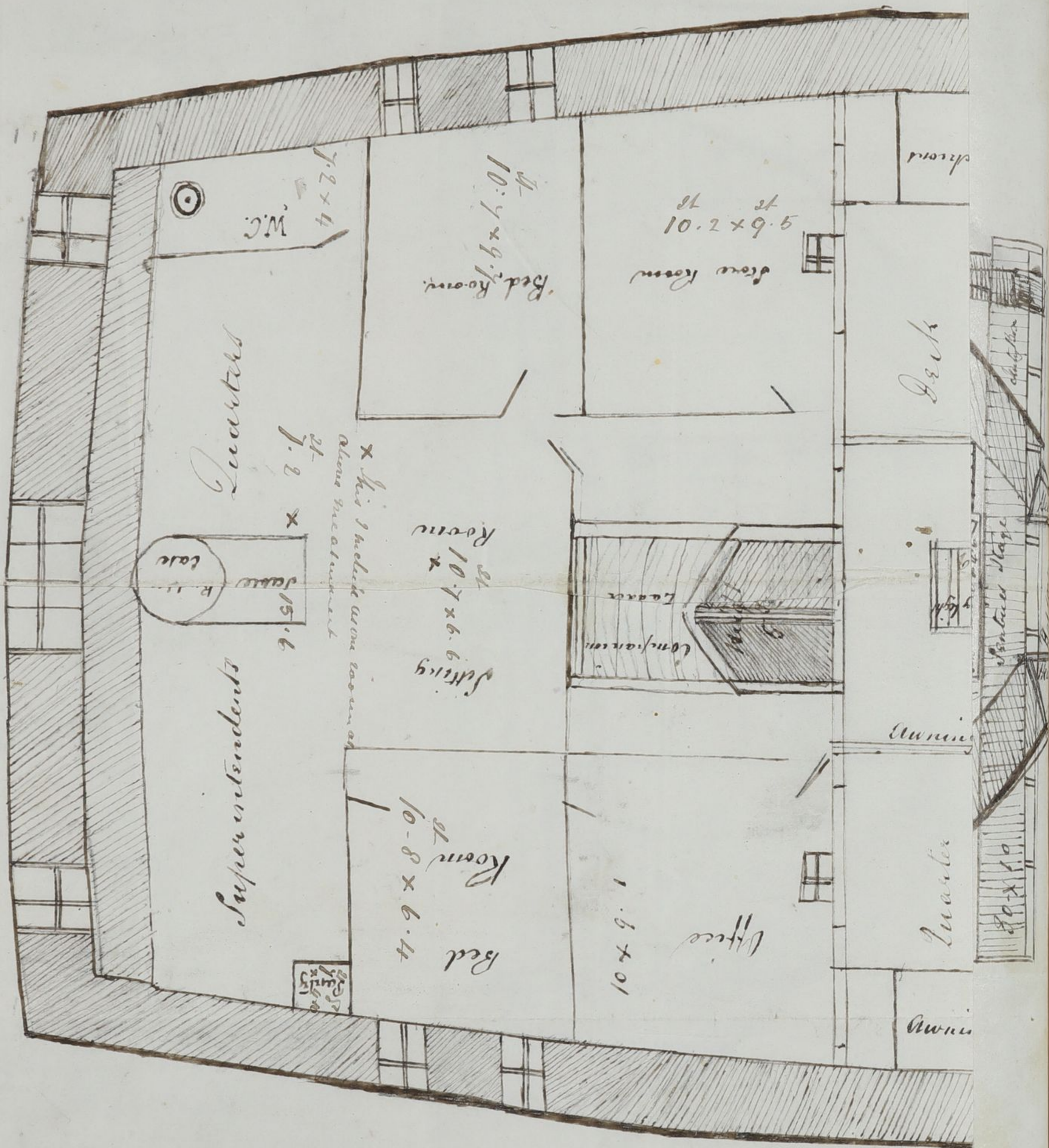
of the 1<sup>st</sup> Cell Deck of H.M. Majesty's Hulk "President"  
 containing forty two cells, two solitary & two water closets  
 Henry W. Blackford Esq. Superintendent.  
 Jan<sup>r</sup> 25<sup>th</sup> 1856

Plan drawn by H. W. Blackford  
 Shipkeeper



56/162

[917]



GAOLS AND PRISONERS.

— *Shulk "President"* —

— 1855 —

— *Plan* —  
— of Her Majesty's Shulk —  
— "President" —

— No. 1 Upper Deck &c —

— January 23<sup>rd</sup> 1856 Melbourne —

Officer in Charge *Captain H.*

Length 136 Feet

Beam 29 Feet

Tonnage Not known

No. Prisoners - 80 -  
Capable  
of holding.





- | QUESTIONS.   | ANSWERS.  |
|--|---|
| 1. General Description of the Prison; whether Common Gaol, House of Correction, or otherwise? (To be accompanied by a Ground Plan of the Buildings, &c.)   | <i>Penal House fitted to receive Eighty prisoners.<br/> <del>Explanation of the dock appended</del></i>   |
| 2. Under whose jurisdiction and superintendence; and what measures are adopted for securing the Visitation of the Prison by the Local Magistrates or other Authorities? (A Copy of the Rules and Regulations to be forwarded with the Return.) | <i>Under the jurisdiction of the Inspector General of Penal Establishments, and the immediate superintendence of a Superintendent.<br/>                 Whether Justice attends weekly to hold trials, inspect huts, &amp;c.<br/>                 The local Magistrates and other Officers have access when desired.<br/> <del>Copy of Regulations appended</del></i> |
| 3. Number of Officers, and how appointed? Do all the Officers reside in the Prison? Are Female Prisoners attended by Female Officers exclusively?  | <i>Three Officers appointed by the Governor and 18 subordinates by the Inspector General. All of whom reside on board.</i>  |
| 4. Number of Classes, Divisions or Wards, Day-rooms, Work-rooms, and Airing-yards (with reference to Plan); and whether the same can be extended or increased?   | <i>One Exercise deck,<br/>                 No space available for extension.</i>  |
| 5. Number of Sleeping-cells, Solitary or Dark-cells, &c.; and if any are below ground?   | <i>Sleeping Cells 81. Solitary 2<br/>                 one of which cannot be occupied during the night.</i>   |

- | QUESTIONS.   | ANSWERS.  |
|--|---|
| 6. Dietary or Weekly Allowance, and Weekly Cost per head for the different descriptions of Prisoners? And under what system and control the Food, Medicine, and Clothing for the Prisoners is contracted for, or otherwise provided? | <i>Prisoners in separate Confinement receive the following Rations being No 4 Scale.<br/>                 4 lbs Bread. 3 3/16 Maize 3 1/2 lbs Meat 3 1/2 lbs Potatoes 7/10. Sugar 3 1/2 OZ. Salt. 3 1/2 OZ Soap.<br/>                 at a cost of 5/6 1/2 per head.<br/>                 Banded Prisoners receive the following scale. No 5<br/>                 4 lbs Bread. 3 1/2 lbs Maize 7 lbs Meat 4 lbs Potatoes 7/10 Sugar. 3 1/2 OZ. Salt. 3 1/2 OZ. Soap at a cost of 4/10 1/2<br/>                 Sick receive 1/2 No 4 Scale.<br/>                 Solitary Rations 7 lbs Bread. Cost 1. 10 1/2 per head.<br/>                 Clothing allowance 3 Quits a Year. 1 1/2 in summer, 1 1/2 in winter. 1 pair of Shoes. 1 pair of Socks.<br/>                 Winter - 1 Grey Jacket. 1 Grey Trowsers. 1 Grey Coat. 1 Cotton shirt. 1 pair of Shoes -<br/>                 Weather permitting, Each prisoner has about 4 hrs exercise during the day. Prisoners when sentenced to Solitary Confinement are allowed one hour every 4<sup>th</sup> or 5<sup>th</sup> days.</i> |
| 7. Allowance of Clothing and Bedding, and Cost per head?   | <i>Each Prisoner is allowed 1 Rug &amp; 3 Blankets.<br/>                 Average cost per head £3. 12.</i>  |
| 8. Hours of Labor and Exercise?  | <i>Unemployed</i>   |
| 9. Description of Employment, and Hard Labor?  | <i>Unemployed</i>   |
| 10. Amount of Earnings, and how applied; in what proportion to the Prisoners, to the Officers, or the Fund for the Maintenance of the Prison?  | <i>Some prisoners from the "Muller" "Lysander" were employed in repairs during the year, the value of whose labor was estimated at £16. 7. 6</i>  |
| 11. Whether the Classification directed by the Colonial Act has been observed: if not, for what reasons; and what measures have been taken to remedy this defect?  | <i>The prisoners confined here are all of the most desperate and hardened class.</i>  |
| 12. Are convicted Prisoners prohibited from receiving Visits or Letters, or any articles of Food or Clothing from their Relatives or Friends: if not, under what restrictions?   | <i>Prohibited, unless specially authorized by the Inspector General.</i>  |

RETURN of the GAOLS, &c.—continued.

- | QUESTIONS.  | ANSWERS.  |
|---|---|
| 13. Is there a Chapel in the Prison, or suitable Apartment for the performance of Religious Services? How are the Prisoners separated therein?                          | <i>Not any. The Ministers attend the prisoners in their cells</i>   |
| 14. What Duties are performed by the Chaplain? What provision is made for the Instruction of the Prisoners; and are they supplied with Bibles and other suitable Books? | <i>The Church of England Religious Instruction visits with much regularity. The Roman Catholics have only been visited twice during ten months. All are supplied with Bibles and Prayer Books, and Religious and instructive Books are also issued.</i> |
| 15. Are Dissenting Ministers allowed to have access to the Prisoners; and if so, at what times, and under what restrictions?  | <i>Only when authorized by the Inspector General</i>  |
| 16. What Duties are performed by the Surgeon? Are separate Buildings or Apartments provided for the Sick?   | <i>The Medical Officer has visited with few exceptions every second day. Performs all operations and dispenses medicine, with the assistance of one of the Lecturers.</i>   |
| 17. What diseases have been most prevalent during the Year (in reference to Columns 10 and 11, Return No. 1)?   | <i>Headaches, Colds, Coughs, Skin affections and Debility</i>   |
| 18. Reasons for non-employment of Prisoners (in reference to Column 8)?   | <i>They are unemployed as a punishment.</i>   |

RETURN of the GAOLS, &c.—continued.

- | QUESTIONS.   | ANSWERS.  |
|--|---|
| 19. Reasons for Punishments by Whipping, Irons, Solitary Confinement, or otherwise?  | <i>The Punishments are inflicted by the Visiting Justice for infractions of the discipline and regulations, and are awarded as those most likely to prove efficacious, Whipping has not been resorted to on any occasion</i>                    |
| 20. Is there any Insane Person in confinement? State his or her Name and Age, and for what offence committed? How long has he or she been in confinement; and is such Person separated from the other Prisoners? | <i>Not any</i>  |
| 21. Are any, and what fees demanded of Debtors, or of any other Prisoners, either at their admission to or discharge from the Gaol?  | <i>Not any</i>  |
| 22. General Observations.  | <i>The prisoners have been generally well conducted and healthy, the Officers are efficient, and the state of the hull generally, was satisfactory at the conclusion of the year.</i><br><br><i>John Price</i><br><i>Inspector General P.C.</i> |