



No. 7551

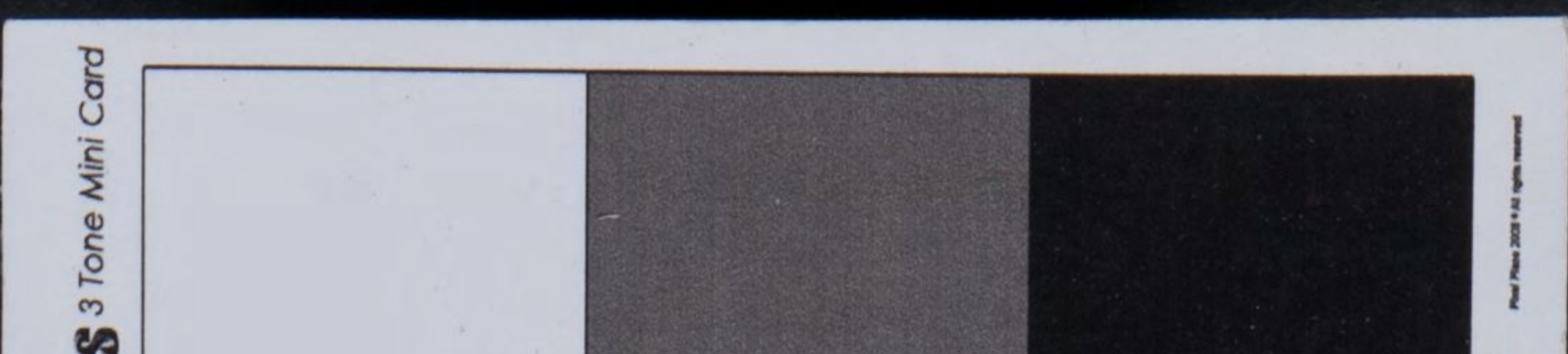
Name.

Powell Charlotte

Florence Williams @ Williams

Height	5' 1"	Sentence	14 days Impr.				
Weight	9.4		3 months				
Complexion	Fresh	Imp	imp				
Hair	Dark	Indef					
Eyes	Blue						
Nose		Date of Conviction	27.10.24				
Mouth			7.11.24	18.2.26			
Chin		Offence	Induff.				
Eyebrows		Indigent.	Behaviour means.				
Visage							
Forehead							
Date of Birth	1894		V. D. Act				
Native Place	S. Aus.						
Trade	Domestic	Where and before whom tried?					
Religion	Presbytn	Melb. P.S.					
Read and Write	Both	Ch of Beh.	Ch. of				
	Unarrud	Colony Female Pen	Bench				
Particular Marks	18-12-26 £10 or 7 days 17 or 3 days L & B, L & B Fitzroy P.S. as C Williams 30.10.26 £1 or 7 days Drunk. Melbourn P.S. as C Powell 1-10-26 £2 or 14 days Importuning Melb. P.S. as C. Williams £5 or 1 month. 20.5.26. Drunk 1 dis. melb P.S. as C Powell. 14 days. 28.1.26 Off Beh. Fitzroy P.S. as matel Ball						
Previous History	4 minor convictions under 1 month. 10 or 3 Days Drunk 13.4.25. Fitzroy P.S. £2 or 15 days Drunk 30.10.25. Richmond P.S. as Florence Rowle. £4 or 7 days Drunk 4-1-26 melb P.S.						

AT WHAT STATION	WHEN RECEIVED	OFFENCES, SENTENCES, Etc.	EXTENSIONS BY—			
			VISITING JUSTICE		GOVERNOR	
			M.	D.	M.	D.
Colburg Gaol	27.10.24	2.3.25 £50 Freedom by time as V.D. Board.				
Female Pen. P.H.G.	13.4.25	8.4.25 " " " "				
" " Colburg.	30.10.25	15.4.25 " " " "				
" " "	4.1.26	12.11.25 " " " "				
" " "	28.1.26	11.1.26 " " " "				
" " "	18.2.26	10.2.26 " " " "				
" " "	10.5.26	4.5.26 3 days Spel Rem. Ill.				
To Freedom (time)	15.10.26	14.5.26 To Freedom by time				
Female Prison	30.10.26	8.6.26 1 Day Spel. Rems.				
To Freedom (Fine Paid)	3.11.26	15.6.26 To Freedom by time				
Female Prison	18.12.26	30.6.26 " " " "				
To Freedom (time)	27.12.26					





Height	5' 4"	Sentence					
Weight		6 months duft.					
Complexion	Fresh						
Hair	Brown						
Eyes	Hazel						
Nose		Date of Conviction					
Mouth		29.1.25					
Chin							
Eyebrows		Offence					
Visage		Insufficient means					
Forehead							
Date of Birth	1896						
Native Place	England						
Trade	Servant	Where and before whom tried?					
Religion	R. C.	Heidelberg P.S.					
Read and Write	Both	Cl. gbencha					

Particular Marks

Previous History

20.11.24. Offensive behaviour £5 or 1 month N. hills P.S. as Clara Cook.  
 24.9.24. Abusive language £3 or 21 days N. hills - - Madge Gordon  
 24.7.25 Larceny. 14 days Carlton P.S.  
 Also 3 short sentences in Melbourne Gaol.

AT WHAT STATION

WHEN RECEIVED

OFFENCES, SENTENCES, Etc.

EXTENSIONS BY—  
VISITING JUSTICE GOVERNOR

M. D. M. D.

J. P. Coburg  
 J. P. Coburg

29.1.25  
 24.7.25

WARRANTS DISCHARGE 28.6.1925  
 TO FREEDOM BY REMISSION 27.6.1925

6.8.25 To Freedom by time.

PHOTOGRAPHS.

No. 7554

Name. Stow, Mary Ann

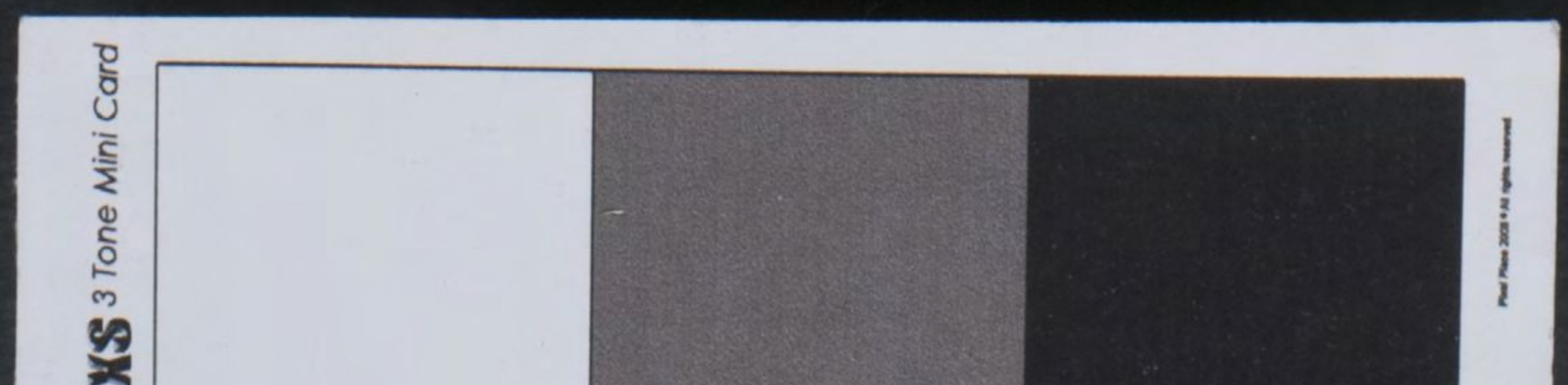
Height	4' 11 1/2"	Sentence	£15 or 12 months				
Weight			£2 or 7 days				
Complexion	Fresh		£2 - - -				
Hair	Fair		£2 - - -				
Eyes	Blue		12 months, bond £25				
Nose		Date of Conviction					
Mouth			6.10.25				
Chin			13.1.25				
Eyebrows		Offence	Larceny				
Visage			Assault 4				
Forehead			Threatening				
Date of Birth	1882		Language				
Native Place	Tasmania						
Trade	Servant	Where and before whom tried?					
Religion	C.C.		Honourable				
Read and Write	Both		P.S.				
			Ch. of Peace				

Particular Marks

Previous History

AT WHAT STATION	WHEN RECEIVED	OFFENCES, SENTENCES, Etc.	EXTENSIONS BY—			
			VISITING JUSTICE		GOVERNOR	
			M.	D.	M.	D.
F. T. Colmg Police	7.1.25	14.5.25 To Freedom Spcl Auth.				
	12.1.25					
F. P. Colmg	14.1.25					

7555 Emma Roberts Feb '25



PHOTOGRAPHS.

No. 7555

Name. Roberts, Lerina

7555 Lerina Roberts Feb 25



Height	5' 2"	Sentence	12 months B.D. 12 months H.
Weight	110 stone		
Complexion	Fresh		
Hair	Fair		
Eyes	Blue		
Nose		Date of Conviction	2.8.43
Mouth			
Chin			
Eyebrows		Offence	Larceny
Visage			
Forehead			
Date of Birth	1886		
Native Place	Victoria		
Trade	Servant	Where and before whom tried?	Mellor & S.
Religion	R.C.		Book J.
Read and Write	Both		
			Judge Dominski.

Particular Marks

Previous History

AT WHAT STATION	WHEN RECEIVED	OFFENCES, SENTENCES, Etc.	EXTENSIONS BY—			
			VISITING JUSTICE		GOVERNOR	
			M.	D.	M.	D.
J.P. Melbourne F. Prison H. Coast Melbourne	9.2.25 19.8.43 2.12.43 6.12.43	1.4.25. Brother Herbert Hill appointed Curator. To Abbotsford Reformatory. Released from authority. 24/12/43. Recy £25 Q.B. for 6 months.				





13-8  
48 hr  
Fitzroy

17-1-30  
Disorderly  
7 days  
Richmond P.S.  
as  
Loren & Toward

Law ex. 16 10 28

7.9.28  
or 14 days  
or 7 days  
Drunk  
Fitzroy P.S.  
Loren & Toward

EXTENSIONS BY -

VISITING JUSTICE GOVERNOR

M. D. M. D.

6-3-31

10/ or 3 days

Drunk

Fitzroy P.S.

18-5-31

20/ or 7 days

Drunk

Fitzroy P.S.

21-12-31

100m / mtd

10/ or 24 hr

Drunk

Fitzroy P.S.

6-32

10/ or 3 days

Drunk

Fitzroy P.S.

31-7-33

out days

Drunk

Fitzroy P.S.

6-10-33

10/ or 7 days

Drunk

Fitzroy P.S.

7-34

10/ or 7 days

Drunk

Fitzroy P.S.

27-11-34

2 or 14 days

Drunk

Carlton P.S.

RECEIVED

JUSTICE GOVERNOR

		RECEIVED		JUSTICE	GOVERNOR
				M	D
8-7-35	Female Prison	12.7.38	12.7.38 - Dr & Dis - 10/ or 3 days - Fitzroy P.S. - Ch. of B.	M	D
Drunk	To Freedom	14.7.38	22.7.38 - Dr & Dis - 1/ or 7 days - Fitzroy P.S. - Ch. of B.		
7.1.36	Female Prison	22.7.38	10.8.38 - Dr & Dis - 1/ or 7 days - Fitzroy P.S. - Ch. of B.		
Drunk	To Freedom	28.7.38	25.8.38 - Sus. Meas - 14 days imp - Fitzroy P.S. - Ch. of B.		
Fitzroy	Female Prison	10.8.38	Dr & Dis - 1/ or 7 days - do - do		
	To Freedom	16.8.38	Dr & Dis - 1/ or 7 days - do - do		
13.1.36	Female Prison	25.8.38	10.10.38 - Dr & Dis - 1/ or 7 days - do - do		
Drunk	To Freedom	20.9.38	Line Pk. 28.11.38 - Dr & Dis - 1/ or 7 days - Carlton P.S. - Ch. of B.		
Fitzroy	Female Prison	10.10.38	11.2.39 - Vagrancy - 3 Mos - Fitzroy P.S. - Ch. of B.		
	To Freedom	16.10.38	as Florence Doover		
1.3.37	Female Prison	28.11.38	2.9.39 - Dr & Dis - 10/ or 3 days - Fitzroy P.S. - do		
Drunk	To Freedom	10.12.38	9.9.39 - Dr & Dis - 1/ or 7 days - Fitzroy P.S. - do		
Fitzroy	Female Prison	11.2.39	18.9.39 - Dr & Dis - 1/ or 7 days - Fitzroy P.S. - do		
	To Freedom	6.5.39	23.12.39 - Dr & Dis - 10/ or 3 days - Fitzroy P.S. - do		
Female Prison	Female Prison	2.9.39	9.1.40 - Dr & Dis - 10/ or 3 days - Fitzroy P.S.		
To Freedom	To Freedom	4.9.39	8.2.40 - Dr & Dis - 10/ or 3 days - Fitzroy P.S.		
Female Prison	Female Prison	9.9.39	14.2.40 - Dr & Dis - 1/ or 7 days - do - do		
To Freedom	To Freedom	15.9.39	23.2.40 - Dr & Dis - 2 or 3 weeks - do - do		
Female Prison	Female Prison	18.9.39	11.5.40 - Dr & Dis - 10/ or 3 days - do - do		
To Freedom	To Freedom	24.9.39	5.6.40 - Dr & Dis - 1/ or 7 days - do - do		
Female Prison	Female Prison	27.11.39	23.7.40 - Dr & Dis - 2 or 10 days - do - do		
To Freedom	To Freedom	25.12.39	26.8.40 - Dr & Dis - 1/ or 3 weeks - do - do		
Female Prison	Female Prison	9.1.40	16.9.40 - Dr & Dis - 1/ or 1 month - do - do		
To Freedom	To Freedom	11.1.40	19.11.40 - Dr & Dis - 2 or 2 weeks - do - do		
Female Prison	Female Prison	8.2.40	23.12.40 - 2 or 10 days - Dr & Dis - do - do		
To Freedom	To Freedom	10.2.40	21.7.42 - 1 month - Beg. Alms - Bendigo P.S.		
Female Prison	Female Prison	14.2.40	25.11.42 - 1 or 3 days - Dr & Dis - Fitzroy P.S.		
To Freedom	To Freedom	20.2.40	11.12.42 - 1 or 7 days - do - do		
Female Prison	Female Prison	23.2.40	16.9.40 - Female Prison		
To Freedom	To Freedom	13.3.40	12.10.40 - To Freedom 2 Pk. Pd.		
Female Prison	Female Prison	11.5.40	19.11.40 - Female Prison		
To Freedom	To Freedom	13.5.40	29.11.40 - To Freedom F.Pd.		
Female Prison	Female Prison	5.6.40	23.12.40 - Female Prison		
To Freedom	To Freedom	11.6.40	1-1-41 - To Freedom		
Female Prison	Female Prison	24.7.40	22.7.42 - Female Prison		
To Freedom	To Freedom	1-8-40	19-8-42 - To Freedom		
Female Prison	Female Prison	26.8.40			
To Freedom	To Freedom	14-9-40			
Female Prison	Female Prison	6.1.36			
To Freedom	To Freedom	12.1.36			
Female Prison	Female Prison	16.1.36			
To Freedom	To Freedom	1.3.37			
Female Prison	Female Prison	7.3.37			
To Freedom	To Freedom				

27-11-34  
2 or 14 days  
Drunk  
Carlton P.S.

20  
22  
Thee  
27  
25  
30  
40  
50  
60  
70  
80  
90  
100  
110  
120  
130  
140  
150  
160  
170  
180  
190  
200



7556 Florence Dossor. Apr 1939 Born Dec 1891



13-8  
48  
Fisy

8-7  
Duy

7.1.36

<sup>14</sup>  
Drunk Disorderly  
Fitzroy P. S.

13. 1. 36

10/ or 3 days  
Drunk Disorderly

J. V. Doburg	13. 2. 25
Female Prison	18. 11. 26
To Freedom (time)	23. 11. 26
Female Prison	5. 5. 27
To Freedom (time)	11. 5. 27

*1/6 remission granted*

WARRANTS DISCHARGE 23. 7. 1925

TO FREEDOM BY REMISSION 22. 7. 1925

WARRANTS DISCHARGE 24-12-1929

ex. 16. 10. 28

9. 28

14 days

7 days

unk (2)

roy P.S.

and flow

17-1-30.

Disord

days.

mond P.S.

is

er flow

XTENSIONS B

ITING GOVER

STICE

D.	M.
6-3-31	
10/ or 3 da	
Drunk	
Fisy	
18-5-31	



PHOTOGRAPHS.

10 28  
 days  
 drunk  
 Melbourne P.S.  
 27.6.27  
 16 or 1 month  
 drunk  
 Melbourne P.S.  
 30.7.27  
 40 or 7 days  
 drunk  
 Carlton P.S.  
 31.8.27  
 20 or 7 days  
 drunk  
 Melbourne P.S.  
 7.9.27  
 10 or 6 days  
 Off behav  
 Fitzroy P.S.  
 12.9.27  
 20 or 3 days  
 15 or 1 month  
 drunk  
 Indecent language  
 Melbourne P.S.  
 18.10.27  
 15 or 1 month  
 10 or 24 hours  
 0 or 6 weeks  
 drunk  
 Melbourne P.S.  
 3.12.27  
 12 fine & 4 damages  
 or 6 weeks  
 Breaking panes  
 Melbourne P.S.  
 16.1.28  
 15 or 1 month  
 15 or 6 months  
 0 or 10 weeks  
 Indecent language  
 Melbourne P.S.

AT WHAT STATION	WHEN RECEIVED	OFFENCES, SENTENCES, &c.	EXTENSIONS BY— VISITING JUSTICE GOVERNOR
			M D M D
Female Pr.	18-3-32	18-3-32 10/ or 3 days, Drunk, Carlton P.S.	
To Freedom	20-3-32	1-4-32 40/- fine, damage to or 1 mth, Wifely damage, Chelb. P.S.	
Female Pr.	14-3-32		
To Freedom	24-4-32	1 DAY SPECIAL REMISSION GRD. BY LG 18/4/32	
Female Pr.	30-5-32		
To Freedom	24-6-32	30-5-32 10/ or 24 hrs, 15 or 1 mth, Drunk, Ind. Lang, Chelb. P.S.	
Female Pr.	18-7-32		
To Freedom	14-10-32	1 DAY SPECIAL REMISSION GRD. BY LG 20 JUN 1932	
Female Pr.	15-10-32	18-7-32 £10 or 3 mths, Ind Lang, Chelb. P.S.	
To Freedom	23-12-32	15-10-32, 3 mths or £10 Ind Lang	
Female Pr.	15-4-33	15-4-33, 10/ or 3 days, Drunk, Fitzroy P.S.	
To Freedom	17-4-33	1-5-33, 40/ or 14 days, Ind Lang, Melbourne P.S.	
Female Pr.	15-5-33	" 40/ or 14 days, Resisting	
To Freedom	27-5-33	29-5-33 10/ or 48 hrs, Drunk	
Female Pr.	29-5-33	28-7-33, 6/ or 7 days, Drunk	
To Freedom	30-5-33	16-8-33, £5 or 1 mth, Resisting, Melbourne P.S.	
Female Pr.	28-7-33	" £10 or 2 mths, Indecent Language	
To Freedom	3-8-33	3 DAYS SPECIAL REMISSION GRD. BY LG 24.10.33	
Female Pr.	16-8-33	2-5-34, 20/ or 7 days, Drunk, Carlton P.S.	
To Freedom	11-11-33	23-7-34, £5 or 1 mth, £2 or 14 days	
Female Pr.	2-5-34	Indecent Language, Drunk, Fitzroy P.S.	
To Freedom	8-5-34		
Female Pr.	23-7-34		
To Freedom	22-8-34	26-1-35 £2 or 14 days, Offensive Behaviour, Melbourne P.S.	
Female Pr.	26-1-35		
To Freedom	8-2-35	3-6-35, 10/ or 30 days, Drunk, Melbourne P.S.	
Female Pr.	3-6-35	7.10.35 40/ or 2 wks Drunk & disorderly Fitzroy P.S.	
To Freedom	5-6-35	9.6.36 Indecent language, 10 or 7 days	
Female Prison	7.10.35	Offensive Behaviour 10 or 7 days	
To Freedom	12.10.35	Assault Police, 1 fine - £3.13.4 damages	
Female Prison	9.6.36	or 14 days sent.	
To Freedom	6.7.36	Melbourne P.S. - 10/ or 14 days	
Female Prison	15.10.36	15.10.36 - Offensive Behaviour - 12 or 14 days	
To Freedom	22.10.36	Melbourne P.S. - 10/ or 14 days	
Female Prison	5.7.37	4.10.37 - Drunk + Dis. £3 or 21 days - Melbourne P.S.	
To Freedom	6.7.37	Female Prison 4.10.37	
Female Prison	23.8.37	To Freedom 10.10.37 (Fine laid)	
To Freedom	4.9.37		



PHOTOGRAPHS.

No. 7558 V.D.

Name. Pender, Elizabeth

as Lippelender

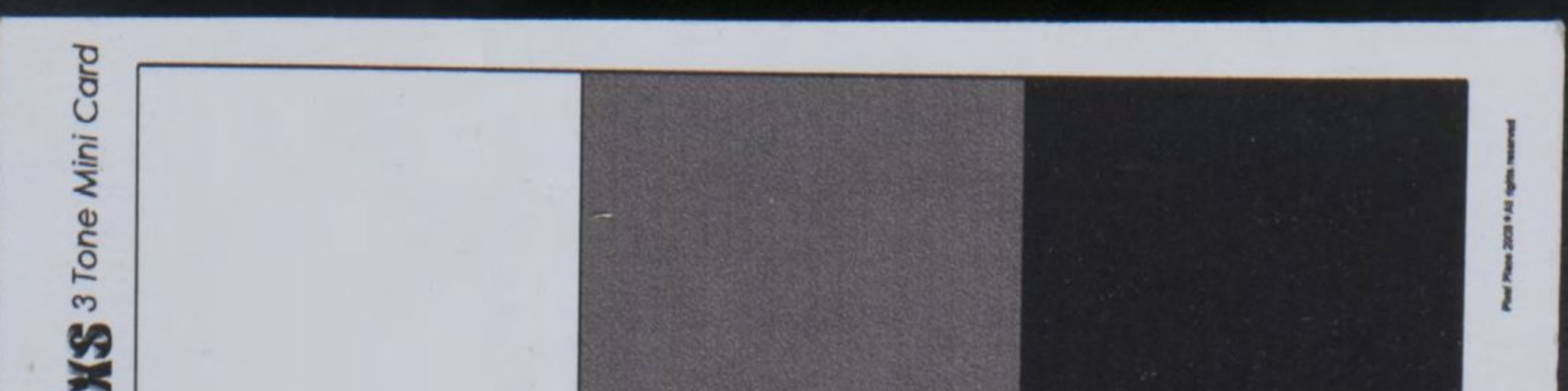
		Sentence		
Height	5' 2 1/4"	1 month imp.	6 mths imp.	12 mths imp.
Weight	9 1/2 lb.			
Complexion	Pallo	Imp. Indefinite		
Hair	fair to gray			
Eyes	blue			
Nose		Date of Conviction		
Mouth		7.4.25	7.7.26	15.2.29
Chin		22.4.25		
Eyebrows		Offence		
Visage		Insufficient means	Idle + dis	Insufficient means
Forehead				
Date of Birth	1872			
Native Place	Scotland	V.D. Act.		
Trade	Servant	Where and before whom tried?		
Religion	Presbyterian	Brahan P.S.	Brahan P.S.	Melbourne P.S.
Read and Write	Both	Ch. of Bench	Ch. of Bench	P.S.
		W. W. G. M. M. M. P. V. J.		Ch. of Bench

Particular Marks	26-7-27 1 month soliciting Brahan P.S.
Previous History	

AT WHAT STATION	WHEN RECEIVED	OFFENCES, SENTENCES, Etc.	EXTENSIONS BY-			
			VISITING JUSTICE		GOVERNOR	
			M.	D.	M.	D.
Female Penitentiary	7.4.25	18.6.25 To Freedom on Bond.				
" "	7.7.26					
To Freedom	2.12.26					
Female Prison	25.7.27					
To Freedom	24.8.27					
Female Prison	15.2.29					
Melbourne Hosp.	11.3.29	J. G. Warrant				

WARRANTS DISCHARGE 8-12-1926  
TO FREEDOM BY REMISSION 2-12-1926

6 DAYS SPECIAL REMISSION CNTD. BY I.G. 30-11-26  
1 DAYS SPECIAL REMISSION CNTD. BY I.G. 12 AUG 1927





PHOTOGRAPHS.

No. 7560

Name. Ryan Violet

Height	5. 3 1/2	Sentence	3 months				
Weight			7. 10.				
Complexion	Fresh		Supt Ind.				
Hair	Auburn						
Eyes	Hazel	Date of Conviction					
Nose							
Mouth			16. 2. 25				
Chin			30. 3. 25				
Eyebrows		Offence	Insignificant				
Visage			Mans.				
Forehead							
Date of Birth	1901		7. 10. ad-				
Native Place	England						
Trade	Servant	Where and before whom tried?					
Religion	R. C.		Subj. of Bench.				
Read and Write	Both		19. 5. 25				

Mr. Benjamin J.

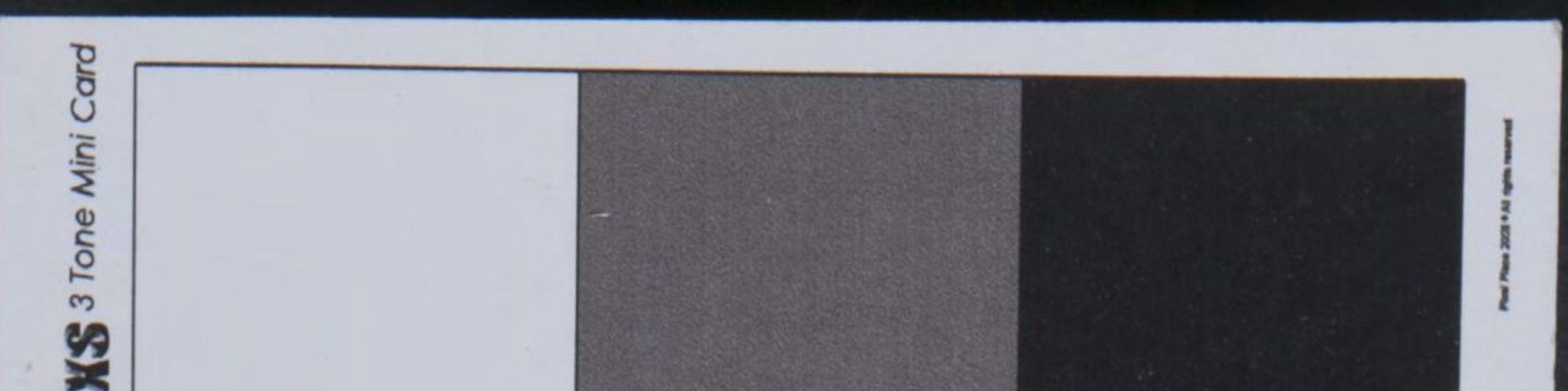
Particular Marks

Previous History

No P. H. in. Pen. M. 1909

AT WHAT STATION	WHEN RECEIVED	OFFENCES, SENTENCES, Etc.	EXTENSIONS BY—			
			VISITING JUSTICE		GOVERNOR	
			M.	D.	M.	D.
Small Pen To Freedom	16/2/25 19-6-25	19. 6. 25 To Freedom on Bond.				

7561 Caroline Farrell. June '25



PHOTOGRAPHS.

No. *7561* Name. *Farrell Caroline*

7561 Caroline Farrell, June '25



Height	<i>5. 1/2</i>	Sentence	<i>12 mos / 6 mos</i>
Weight			<i>impt impt</i>
Complexion	<i>Flesh</i>		<i>with M Lo</i>
Hair	<i>Brown</i>		
Eyes	<i>Blue</i>		
Nose		Date of Conviction	
Mouth		<i>18 May 16-5-27</i>	
Chin		<i>1925</i>	
Eyebrows		Offence	
Visage		<i>Receiving</i>	<i>Sly</i>
Forehead			<i>beg</i>
Date of Birth	<i>1873</i>		
Native Place	<i>Victoria</i>		
Trade	<i>Servant</i>	Where and before whom tried?	
Religion	<i>A. C.</i>	<i>Wilton</i>	<i>with Melb</i>
Read and Write	<i>Both</i>	<i>Sup Ct</i>	<i>petty</i>
		<i>W. Jus</i>	<i>Session</i>
		<i>W. Jordon</i>	

Particular Marks

Previous History

*P. C.'s Nil*

AT WHAT STATION	WHEN RECEIVED	OFFENCES, SENTENCES, Etc.	EXTENSIONS BY—			
			VISITING JUSTICE		GOVERNOR	
			M.	D.	M.	D.
<i>Female Prison</i>	<i>18/5/25</i>	<i>23. 2. 26</i>				
<i>To Freedom</i>	<i>13. 3. 26</i>	<i>4 days Spcl Rem granted by J.J.</i>				
<i>Female Prison</i>	<i>16-5-27</i>	WARRANTS DISCHARGE <i>17. 3. 26</i>				
<i>To Freedom</i>	<i>8-10-27</i>	TO FREEDOM BY REMISSION <i>13. 3. 26</i>				
		<i>6 DAYS SPECIAL REMISSION ONTD. BY I.G. 14 SEP 1927</i>				
		WARRANTS DISCHARGE <i>15. 10. 27</i>				
		TO FREEDOM BY REMISSION <i>8. 10. 27</i>				



PHOTOGRAPHS.

No. 7563

Name. Ross Mary Alice

216

Height	4. 10	Sentence							
Weight		Six months							
Complexion	Fresh	Impt.							
Hair	Brown								
Eyes	Hazel								
Nose		Date of Conviction							
Mouth		9. 6. 25							
Chin									
Eyebrows		Offence							
Visage		Unlawful							
Forehead		Possession							
Date of Birth	1872								
Native Place	England								
Trade	Servant	Where and before whom tried?							
Religion	R. C.	Prison							
Read and Write	Both	P/S							
	Married	Ch of Bench							
Particular Marks		13. 12. 27							
		1 month							
		Larceny							
		Prison							
		Petty Session							
Previous History		Harbouring Reformatory School Boys	7 days	26/10/23					
		Unlawful Possession (2 ct's)	1 month	each count	Concl				
		See S S Book	7. 10. 27						

AT WHAT STATION	WHEN RECEIVED	OFFENCES, SENTENCES, Etc.	EXTENSIONS BY—			
			VISITING JUSTICE		GOVERNOR	
			M.	D.	M.	D.
Female Prison	10/6/25	<div style="border: 1px solid blue; padding: 2px; display: inline-block;">           WARRANTS DISCHARGE 9-11-25            TO FREEDOM BY REMISSION 7-11-25         </div>				
To Freedom	7-11-25					
Female Prison	12-12-27					
To Freedom	11-1-28					

PHOTOGRAPHS.

No. 7504

Name. Charleston, Adelaide

Flavia Jackson



1964 Adelaide Charleston, July 1926.

Height	5' 0"	Sentence	£25 or 3 mos	6 mos
Weight	9' 0"		on each count.	imp
Complexion	Fresh			
Hair	Brown		8 months	
Eyes	Blue		imp.	
Nose		Date of Conviction	20.7.25	7-1-27
Mouth			15.7.25.	
Chin				
Eyebrows		Offence	Forfeited	Occupier
Visage			Recognisance of a	
Forehead			(2)	disorderly
Date of Birth	1895		Receiving.	house
Native Place	Victoria			
Trade	Servant	Where and before whom tried?	Carlton	
Religion	C of E		Malvern P/S.	Petty less
Read and Write	Both.		Ch of Bench	Ch of Bench
			Melb. Sup. Ct	Bench
	Married		Justice M. Arthur	

Particular Marks

Previous History

P. C's ~~with~~ 18.1.27. £25 or 2 months Sly Grog. Carlton P.S. (Fine Paid 18-1-27)

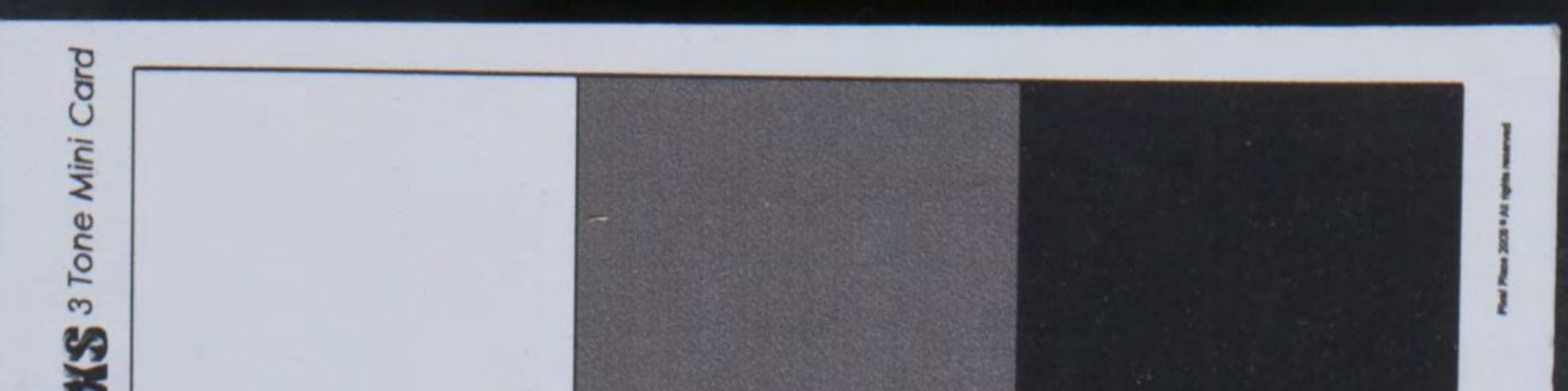
AT WHAT STATION	WHEN RECEIVED	OFFENCES, SENTENCES, Etc.	EXTENSIONS BY—			
			VISITING JUSTICE		GOVERNOR	
			M.	D.	M.	D.
Female P <sup>n</sup> Coburg	29.6.25					
To Freedom	3.7.26					
Female Prison	4-1-27					
Bailed to appeal	7-1-27	Appeal dismissed				
Female prison	16.2.27	5 <del>X</del> DAYS SPECIAL REMISSION GNTD. BY I.O.				
To Freedom	9.7.27	7.6.27 8.7.26 see S7145.				

WARRANTS DISCHARGE 4-7-1926  
TO FREEDOM BY REMISSION 3-7-1926

WARRANTS DISCHARGE 14.7.1927  
TO FREEDOM BY REMISSION 9.7.1927

6656, Annie Smith, Nov '22

11.1  
Fiona  
Under  
Melb





6658, Annie Smith, Nov '22

2 mths 12 mths  
imp. imp.

8-31 5-9-32

uff. Idea  
cano. Disorderly

BBP Melb. P.S.  
Ch of the Ch of the  
Bench Bench

EXTENSIONS BY—  
VISITING  
JUSTICE GOVERNOR

M D M D

	Female Prison	16-1-41	16-1-41	£5 or 1 month impt.	Dr. & Dis.	Carlton P.S.		
	To Freedom	14-2-41	17-2-41	£2 or 7 days	Dr. & Dis.	Melb. P.S.	Ch of B.	
	Female Prison	17-2-41	26-2-41	3 months - Unlawful possession	Do	Do	Do	
	To Freedom	23-2-41	26-5-41	£1 or 3 days - Indec. Lang - Fitzroy P.S.	Do	Do	Ch of Bench	
	Female Prison	26-2-41	30-5-41	{10/ or 12 hours - Dr. & Dis. £2 or 14 days - Indecent language}	Fitzroy P.S.	Do	Do	
	To Freedom	22-5-41	16-6-41	£3 or 14 days - Dr. & Dis. - Melbourne P.S.	Do	Do	Ch of B.	
	Female Prison	26-5-41	15-8-41	{£1 or 7 days - Indecent language 10/ or 12 hours - Dr. & Dis. - Disorderly}	Fitzroy P.S.	Do	Ch of B.	
	To Freedom	28-5-41			Ch of B.	Do	Ch of B.	
	Female Prison	30-5-41	23-8-41	£3 or 14 days - Dr. & Dis. - Melbourne P.S.	Do	Do	Ch of B.	
	To Freedom	13-6-41	6-9-41	£5 or 1 month	Dr. & Dis.	Melb. P.S.	Do	
40	Female Prison	16-6-41	6-10-41	£3 or 14 days	Dr. & Dis.	Do	Do	
Offen	To Freedom	28-6-41	15-11-41	£3 or 14 days	Dr. & Dis.	Do	Do	
Car	Female Prison	15-8-41	17-12-41	3 months imp. - Unlaw. Possession - Melb.	Do	Do	Do	
	To Freedom	22-8-41	25-3-42	1 month - Offen. Behav. - Do.	Do	Do	Do	
	Female Prison	23-8-41	28-4-42	3 months imp. - Larceny - Carlton P.S. - Ch of Bench.	Do	Do	Do	
20	To Freedom	5-9-41	11-8-42	£2 or 7 days - Dr. & Dis. - Melb. P.S.	Do	Do	Do	
	Female Prison	6-9-41	26-8-42	{£3 or 14 days - Dr. & Dis. £20 or 3 months - Dr. & Dis. - Melb. P.S.	Do	Do	Do	
Lit	To Freedom	4-10-41	9-12-42	£3 or 14 days - Dr. & Dis. - Do	Do	Do	Do	
	Female Prison	6-10-41			Do	Do	Do	
	To Freedom	18-10-41			Do	Do	Do	
	Female Prison	15-11-41			Do	Do	Do	
	To Freedom	28-11-41			Do	Do	Do	
	Female Prison	15-12-41			Do	Do	Do	
	To Freedom	13-3-42			Do	Do	Do	
12.1	Female Prison	25-3-42			Do	Do	Do	
Liga	To Freedom	28-4-42			Do	Do	Do	
Indec	Female Prison	28-4-42			Do	Do	Do	
Melb.	To Freedom	24-7-42			Do	Do	Do	
407	Penitentiary	11-8-42			Do	Do	Do	
7	To Freedom	17-8-42			Do	Do	Do	
	Penitentiary	26-8-42			Do	Do	Do	
	To Freedom	5-12-42			Do	Do	Do	
	To Female Prison	9-12-42			Do	Do	Do	
	To Freedom	22-12-42			Do	Do	Do	

Ind. Lang. Melb. P.S.

To Freedom 5-9-35

To Freedom 16-9-35

To Freedom 28-9-35

To Freedom 15-1-30

To Freedom 20-1-30

To Freedom 1-1-31

To Freedom 2-1-31

To Freedom 3-1-31

To Freedom 5-9-32

To Freedom 27-4-32

6658, Annie Smith, Nov '22

218

price.

56

12 mths imp.	12 mths imp.
0-8-31	5-9-32

suff. Ide & ears. Disordaly

BBP (Mell. P.S. ch of the bench. Mell. P.S. ch of the bench.

19-11-27  
40f. or 7 day  
Indec language  
Fitzroy P.S.

28-11-27  
40f. or 14 days  
Offensive behaviour  
Carlton Petty Session

12-12-27  
20f. or 7 days  
Drunk  
Fitzroy Petty Session  
Annie Black

28-11-28  
14 days.  
£5 or 1 mth.  
Drunk  
Ind. Lang.  
Mell. P.S.

12-1-29  
£10, damages  
Indec Lang  
Mell. P.S.

12-1-29  
or 1 mth.  
Resisting  
Mell. P.S.

40f. or 7 days imp, Drunk  
Fitzroy P.S.

2-4-29  
£5 or 1 mth.  
Drunk  
Fitzroy P.S.

9-5-29  
£5 or 1 mth  
Ind. Lang.  
Mell. P.S.

9-7-29  
1 mth imp  
Lang, Mell. P.S.

AT WHAT STATION	WHEN RECEIVED	OFFENCES, SENTENCES, &c.	EXTENSIONS BY-			
			VISITING JUSTICE		GOVERNOR	
			M	D	M	D
Female Prison	14.1.38	14.1.38 - £5 or 1 month - Drunk, Metho.				
To Freedom	12.2.38	Carlton P.S. - Ch. of Bench				
Pentridge	16.2.38	16.2.38 - £20 or 3 mos - Drunk Metho				
To Freedom	11.6.38	- £5 or 1 mth. - Drunk & Disord				
Female Prison	28.6.38	27.6.38 - 1 month - Larceny - Mell. P.S. - Ch. of B.				
To Freedom	25.7.38	26.7.38 - £1 or 7 days - Dr & Dis - Carlton P.S. - Ch. of B.				
Female Prison	26.7.38	28.8.38 - £1 or 7 days - Dr & Dis - Carlton P.S. - Ch. of B.				
To Freedom	1.8.38	10.8.38 - 3 mos. imp - Unlaw Posses - Mell. P.S. - Ch. of B.				
Female Prison	2.8.38	7.11.38 - 10f. or 3 mos. Dr & Dis - Carlton P.S. Ch. of B.				
To Freedom	8.8.38	10.11.38 - £5 or 1 month - Dr & Dis - Melbourne P.S. Ch. of B.				
Female Prison	10.8.38	12.12.38 - 2 months - Larceny - Carlton P.S. Ch. of B.				
To Freedom	11.11.38	13.2.39 - £1 or 7 days - Dr & Dis - Carlton P.S. Ch. of B.				
Female Prison	7.11.38	23.2.39 - £5 or 1 month - Do. - Mell. P.S. Ch. of B.				
To Freedom	9.11.38	29.3.39 - Ins. Beans. 3 mos. imp. North Melbourne P.S. Ch. of B.				
Female Prison	10.11.38	6.7.39 - £5 or 1 month - Dr & Dis - Mell. P.S.				
To Freedom	8.12.38	5.8.39 - £5 or 14 days do Mell. P.S. Ch. of B.				
Female Prison	12.12.38	19.8.39 { £1 or 7 days Ind. Lang. } Fitzroy P.S.				
To Freedom	9.2.39	10f. or 3 days Dr & Dis } Ch. of B.				
Female Prison	13.2.39	29.8.39 - £1 or 7 days - Dr & Dis. } Fitzroy P.S.				
To Freedom	19.2.39	£2 or 7 days - Indec. Lang. } Ch. of B.				
Female Prison	23.2.39	12.9.39 - £5 or 1 month - Indec Lang Carlton P.S.				
To Freedom	21.3.39	25.10.39 - 3 months - Ins. Beans. } Melbourne P.S.				
Female Prison	28.3.39	£5 or 1 month - Dr & Dis. } Ch. of B.				
To Freedom	24.6.39	23.2.40 - £20 or 3 mos. Drunk Metho. } Melbourne P.S.				
Female Prison	6.7.39	£5 or 1 month Drunk & Dis. } Ch. of B.				
To Freedom	4.8.39	19.6.40 - £5. or 14 Days - Dr & Dis - Mell. P.S. - Ch. of B.				
Female Prison	5.8.39	4.7.40 - 2 Months Imp. - Larceny - Mell. P.S. - Ch. of B.				
To Freedom	18.8.39	2.9.40 - £5 or 14 Days - Dr & Dis - Mell. P.S. - Ch. of Bench.				
Female Prison	19.8.39	16.9.40 - £5 or 1 month - Dr & Dis - Carlton P.S. Ch. of B.				
To Freedom	28.8.39	18-10-40 / 3 Months Imp. / Unlaw Posses / Mell. P.S. / Ch of B.				
Female Prison	29.8.39					
To Freedom	11.9.39	To Freedom 2-7-40				
Female Prison	12.9.39	Female Prison 4-7-40				
To Freedom	10.10.39	To Freedom 2-9-40				
Female Prison	25.10.39	Female Prison 14-9-40				
To Freedom	20.2.40	To Freedom 14-10-40				
Female Prison	23.2.40	Female Prison 18-10-40				
To Freedom	18-6-40	To Freedom 14-1-41				
Female Prison	20-6-40	£5 or 14 Days - Dr & Dis - Mell. P.S. Ch. of B.				
To Freedom	3-9-35					
Female Prison	16.9.35					
To Freedom	28.9.35					
To Freedom	15-1-30	To Freedom 1-1-31				
Female Prison	20.1.30	Female Prison 25-3-30				
		To Freedom 2-7-31				
		To Freedom 3-8-31				
		To Freedom 5-9-32				

