

103'

99'

124'
129'8"

123'3"

87'9"

82'

74'

62'4"

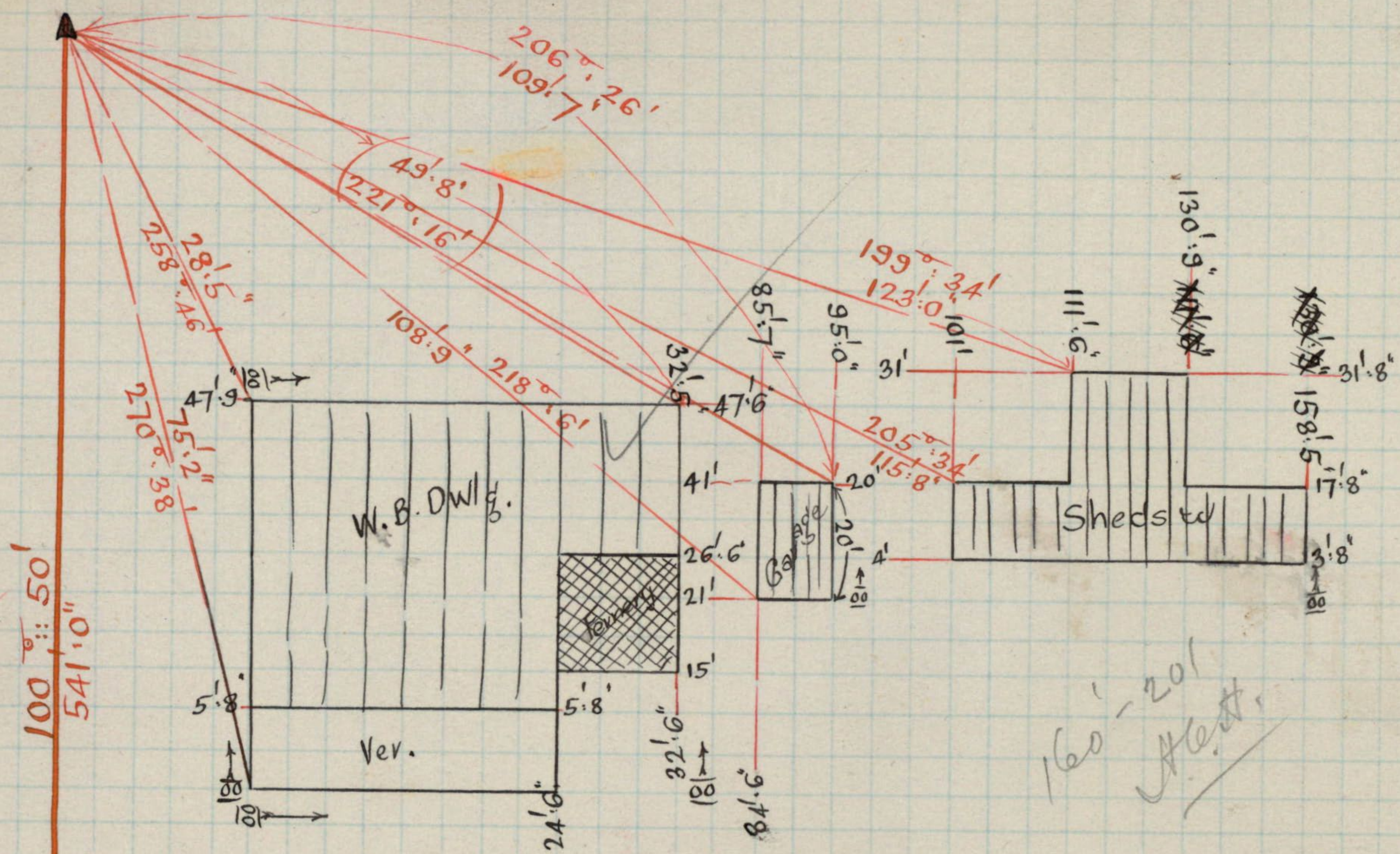
52'

34'9"

132'9"

↑
00'

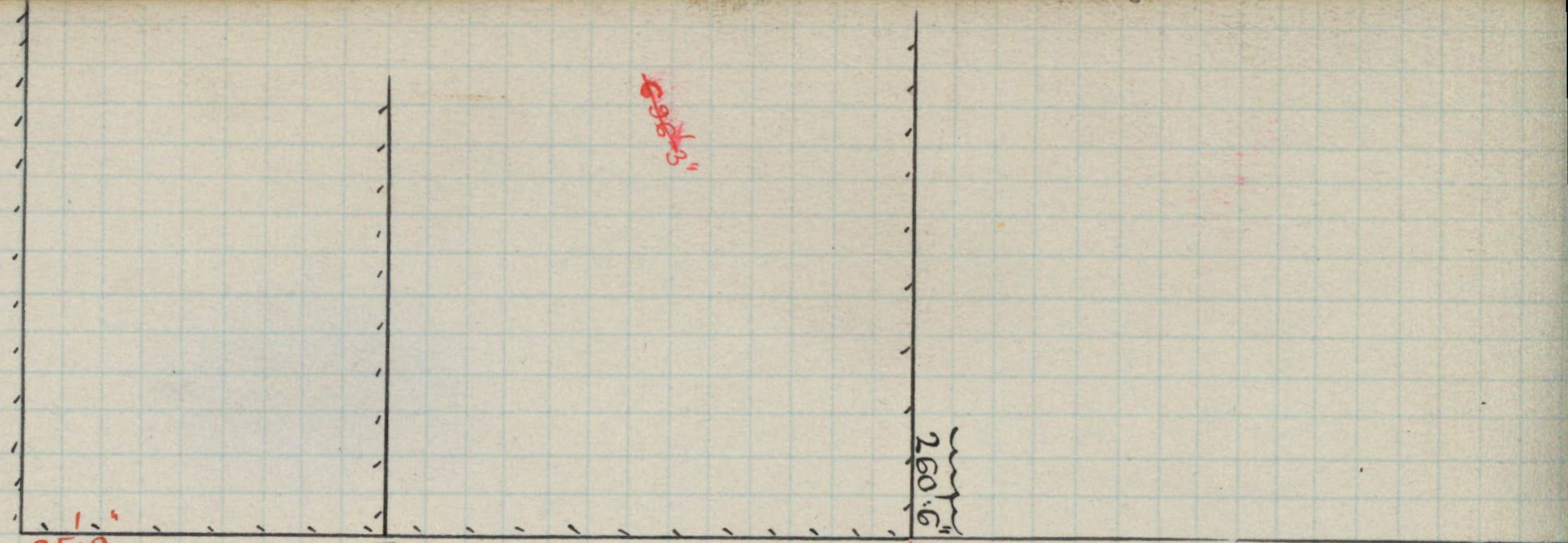
See Page 30



Gardiner's Rd

Center

97' :: 48' :: 29"



25.9"

130.7"

260.6"

279.149'
27.6"

771.3"

9' 9" 00"
9' 8" 54"

9' 9" 00"

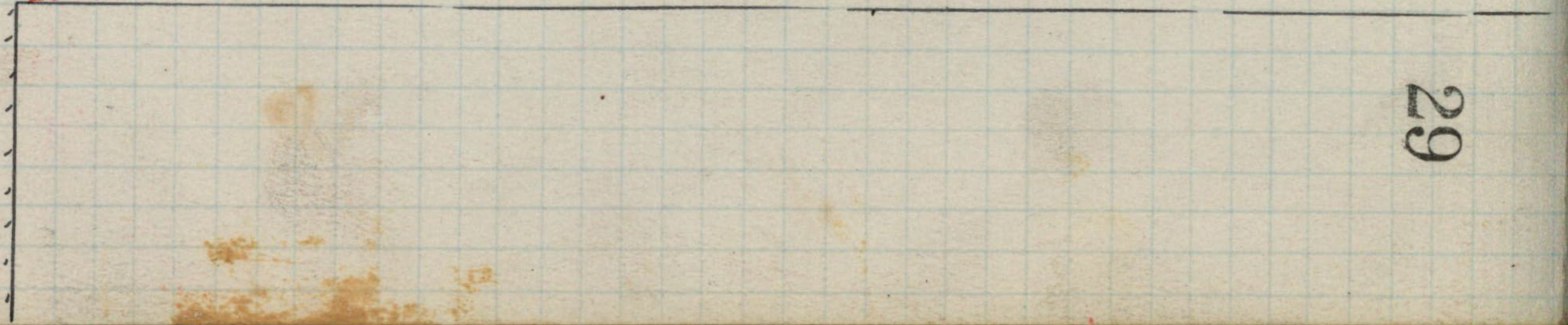
Gardiner's Rd.

303.10"

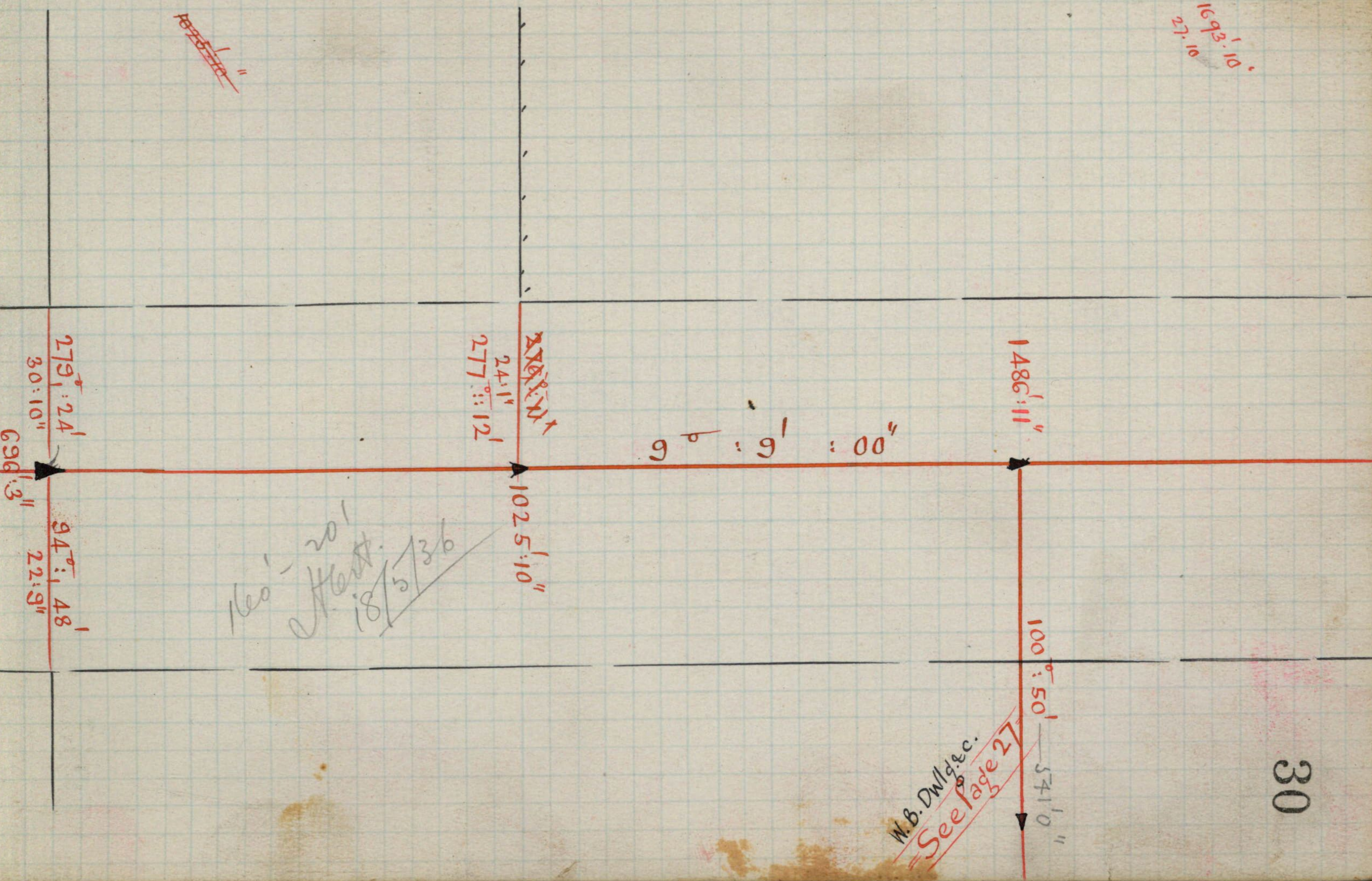
Rd.

See Pages 638 & 828

25.0"



1693.10
27.10



~~1693.10~~

W.B. DWI & c.
See page 27

~~203218~~

9' :: 9' :: 00'

Gardiner's

27' 10"
279' 5"
693' 10"

Rd.

Stables
"cc"

637:4

5' 1" 00"

See Page 108

9' 9" 00"

2032:8

1602
201
18/5/26

See Page 1

East Boundary Rd.

9' : 1' : 55"

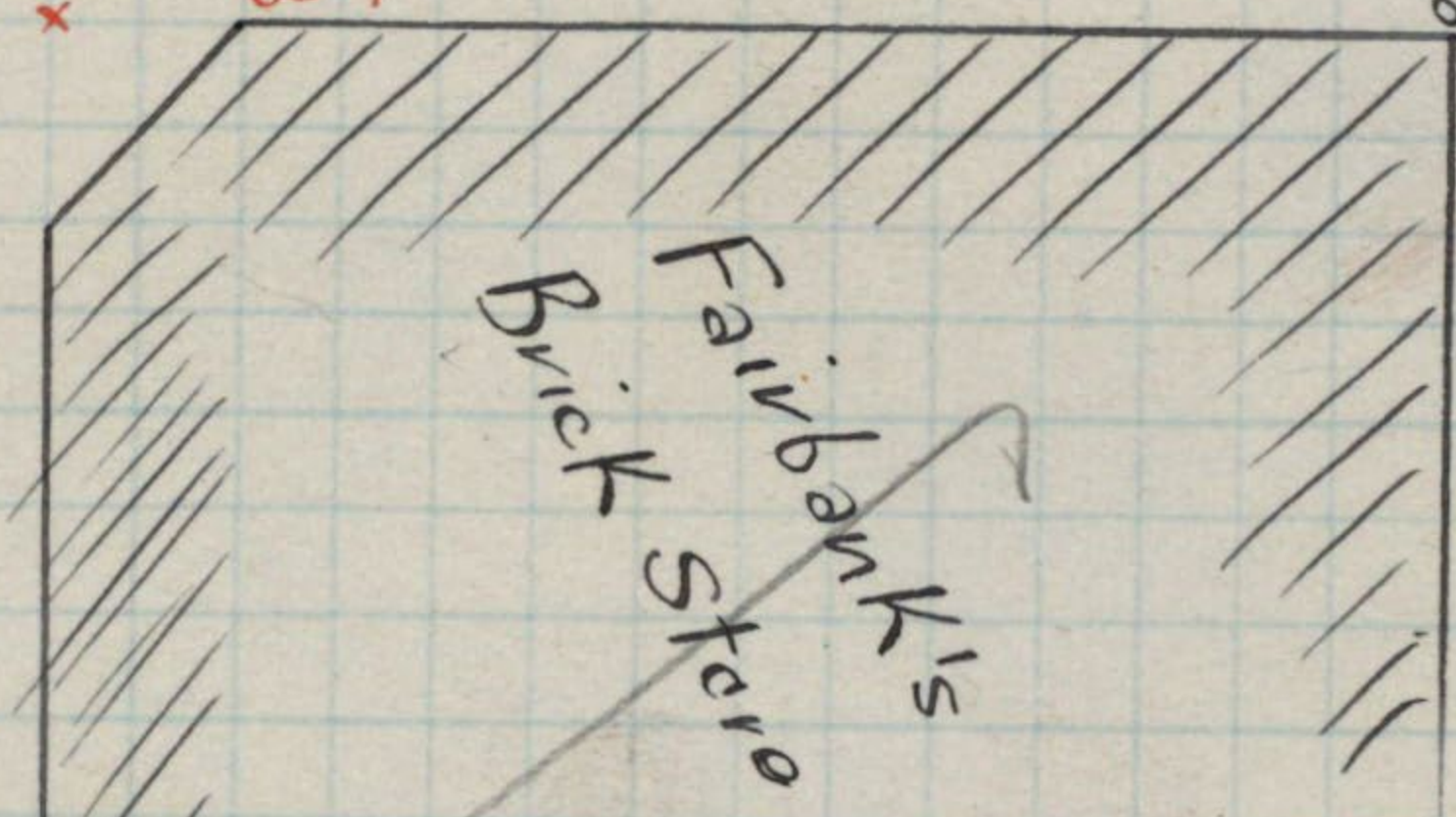
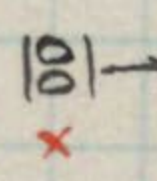


M.M.B. No. 1555

Center Rd.

Rd.

20' 3
37' 9



4' 8" 85' 1"

77' 6"

33'

35' 6"

Pitched

84' 9" 130' 3"

98' 135'

Channel

100' 48'

83' 2"

328' 1"

9' 1"

100' 20' 100' 20'

East Boundary Rd.

1' : 55"

9' : 1' : 55"

1053.6"

Concrete
Culvert

Concrete
Culvert

24.7"

24.7"

30.3"

32.9"

712.8"
716.8"
3.4"

68.9"
96.53

68.9"

See Page 26
W.B. DWG.

East Boundary Rd.

1053.6"

9° : 1' : 55"

68.9"

W.B. DWLg.

meas
~~1483.8 1/2~~"

150.20
East

1011'3" @ M.M.B. 1540

50'6"
912

$$\begin{array}{r} 1011'3'' \\ - 912'0'' \\ \hline 99'3'' \end{array}$$

$$\begin{array}{r} 912 \\ - 418 \\ \hline 494 \end{array}$$

$$\begin{array}{r} 1011'3'' \\ - 494'0'' \\ \hline 517'3'' \end{array}$$

418 x 517'3"
50'6"

102'3"
20'6"
Concrete Culvert

99'3"
1225.0' @ M.M.B. No. 1541
131'0"
161'40"
58'3"

1483'11" @ M.M.B. No. 1544
100'46'
204'3"

Central
Speedway
See Page 25

55'

~~3
4801.9
+ 95.9
475.9~~

90°
90°:19':20"
1°:18':0"
90°:19':30"

Center
See Page 11
Rd.

99' 0" :: 14' 0" :: 15"

Peg
31.3'

Chester St.

8' 0" :: 54' 0" :: 00"

4
751.9"

181°:16' 1"
144:3

105°:57' 1"
84:6"

18' 7"
Peg

19' 3"

19'

See Page 20
W. B. DWG.

119' 0"
232:8"

37

Marwick

Street

0°
 $89^{\circ} 30' 40''$
 $358^{\circ} 3' 40''$
 $89^{\circ} 30' 55''$

~~7~~ 825.7

8^s 54' 00"

99^s 23' 00"

Chester St.

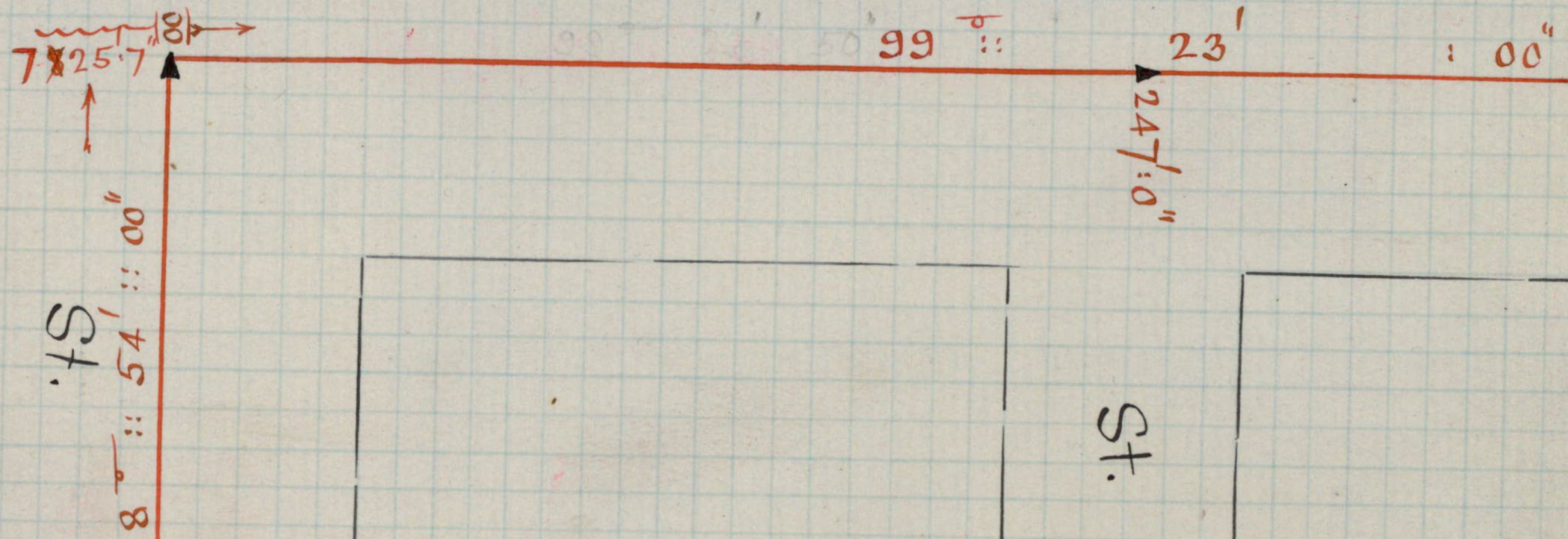
Neo-201
West
10/5/36

W.B.DW/6
See Page 20

Chester

Derry

Warwick St.



Carlson

Dover

Ref

Ref

99° 23' 00"

496.10"

40.10"
319° 36'

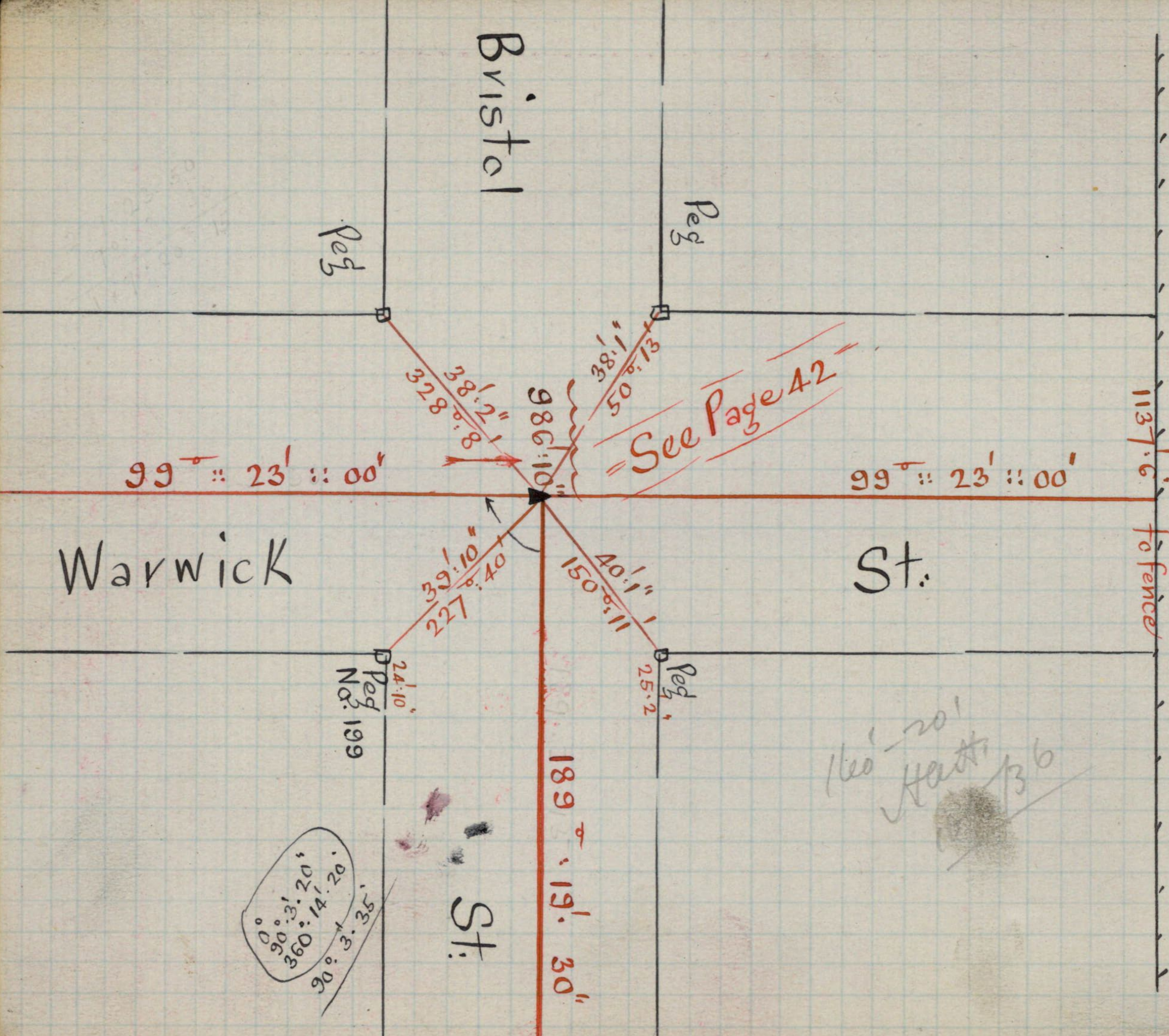
44° 26'
32.8"

1160' 20"
Hert.
10/5/36

St.

St.

See Page 44"



1137'6"

St.

160'-20'
H.C.H.
10/5/36

See Page 13

See Page 41

986'-10"

189' :: 19' :: 30"

723'-0"

Bristol St.

Warwick

99' :: 23' :: 00"

359° 42'
89° 55' 30"

99' :: 14' :: 15"

Center Rd.

42

Rd.

Center

99' 11" 66

1825' 9"

12"

See Page 12

Peg.

Carlou

27' 2"

27' 8"

See Page 21
W.B. DWlg.

256' 46"
144' 5"

111' 8"

203' 37"

219' 33"
55' 6"

189' 25' 00"

321' 8"

W.B. DWlg.

See Page 22

W.B. DWlg.

See Page 22

0°
89° 57' 40"
359° 50' 20"
89° 57' 35"

~~794-23~~

160'-201
West
10/5/36

Street

Warwick

See Page 40

189° 25' 00" 15'

724.2"

99° 23' 00"

496' 10"

St.

See Page 13-

$0^\circ - 54' - 10''$
 $360^\circ - 13' - 32''$
 $90^\circ - 13' - 32''$

See Page 14
See Page 14

Center Rd.

2447'2"
99'0" :: 14' :: 15"
3256'4"

$9^\circ - 11'$
38'3"

W.B. Dwlg.
"Pencla"
Vacant

poor fence

641' found
off fence
square off

Mackie Rd.

330'0"

15'
43'0"
13'2"
35'3"
Wooden Culvert

4'4"
50'6"

9' :: 1' :: 00"

13'4"
21'
645'
641'

0°
 $90^\circ - 13'$
 $360^\circ - 53' - 20''$
 $90^\circ - 13' - 20''$

Vacant

W.B. Dwlg.
See Page 58