

See Page 13

W.B. DWlg.
See Page 54

See Page 59

W. B. DWlg.
Chinese
Market
Garden

993' 1"

30' 9"

24' 9"

25' 8"

1097'

00"

279' 19"
785' 11"

785' 11"
774'

12'

1244' 11"

96' 37"
220' 6"

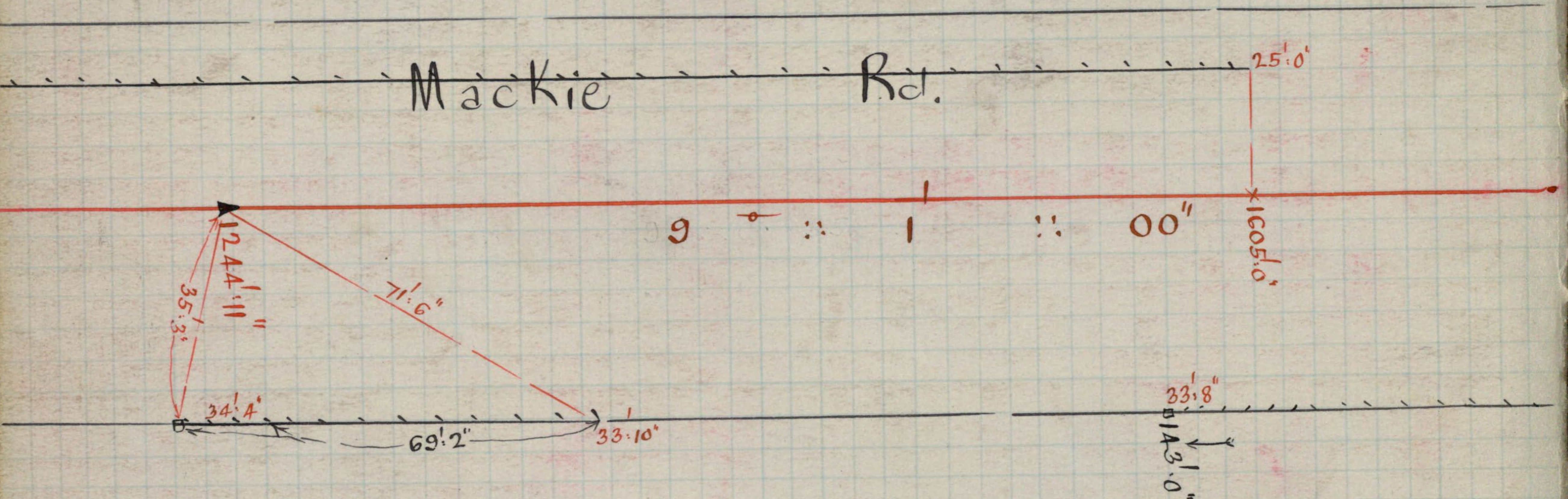
Dec 20 2

"Rosedale"
W.B. DWlg.
See Page 55

W. B. DWlg.
"Rosedale"
See Page 55

W.B. Dwyer
Chinese Market
Garden

Mackie Rd.



W.B. Dwyer
"Rosedale"

W.B. DWLg. 3
Chinese Market Garden W.
See Page 64
See Page 57

$0^{\circ} 57' 40''$
 $90^{\circ} 57' 40''$
 $3^{\circ} 52' 40''$
 $90^{\circ} 58' 10''$

W.B. DWLg. 3
See Page 57

~~1772.2~~
See Page 123

Mackie Rd.

Rd.

9' :: 1' :: 00"

9' :: 1' :: 00"

1772.2"

278^o.51'

2298.2"

1958.7"

2143.10"

140^o.10'

51^o.6'

30:4

30:6

34:7"

34:2"

98' :: 3' :: 00"

Henry St.

179.3

92^o.17'

182.2"

89^o.59'

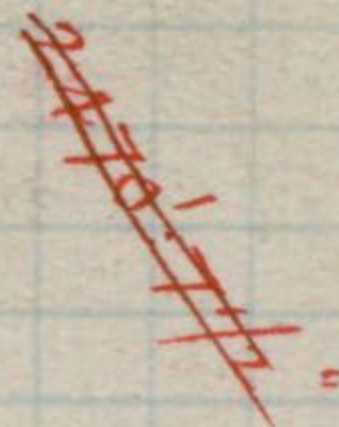
Brick DWLg. 2
See Page 62

158.3"

121^o.00'

W.B. DWLg. 3
See Page 60

W.B. Dwlg.



W.B. Dwlg.
"Heather Brae"
= See Page 57

0°
179° 54' 20"
359° 38' 0"
179° 54' 30"

32' 10" 68' 6" 33' 1"

Mackie

F.P.

20'

47' 0"
233° 31'

Rd.

48' 2"
325° 29'

9° 00' 00"

2400

2470.2

8° 56' 00"

34' 0"

33' 2"

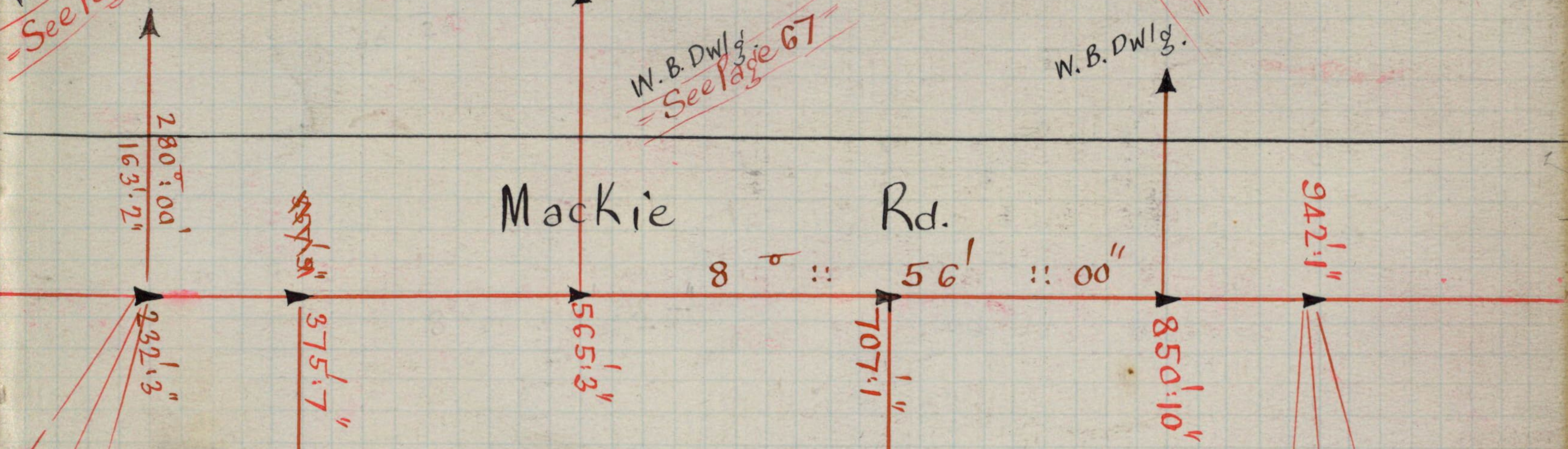
W.B. Dwlg.
= See Page 61

W.B. Dwlg.

W.B. DWlg.
See Page 63

W.B. DWlg.
See Page 67

W.B. DWlg.
See Page 67



W.B. DWlg.
See Page 65

W.B. DWlg.
See Page 66

See Page 114
97° 42' 00"
Paloma St.

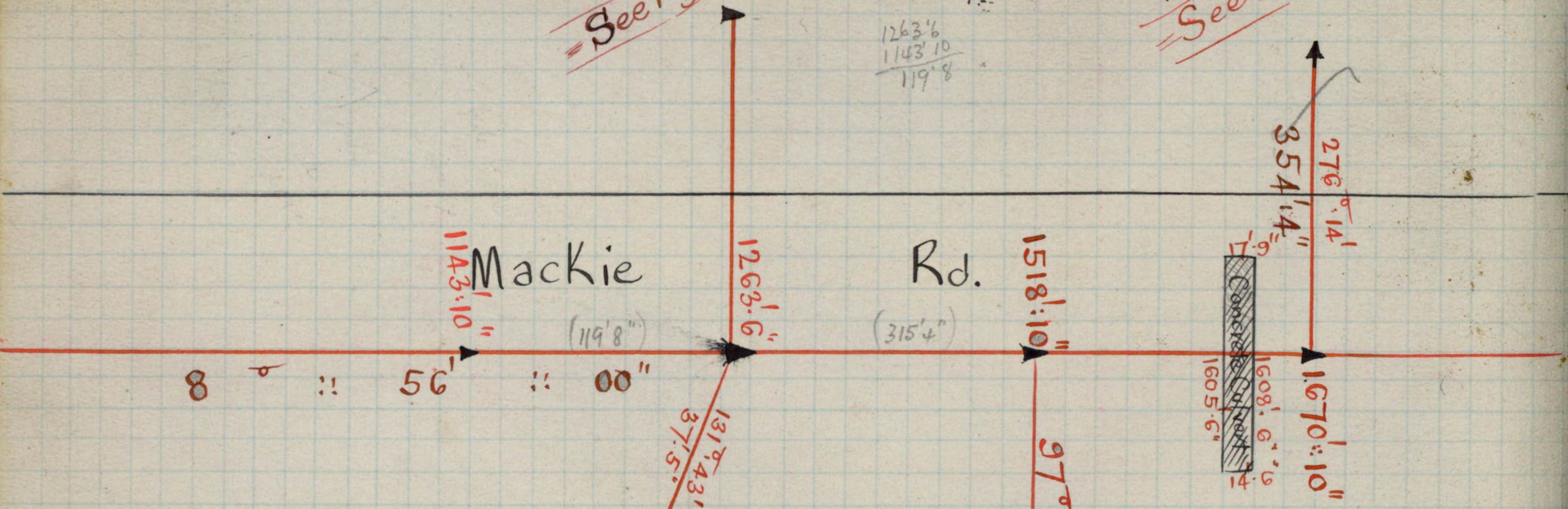
Brick DWlg.
See Page 50

W. B. Dwlg.
See Page 68

1578' 10"
1263' 6"
315' 4"

1263' 6"
1143' 10"
119' 8"

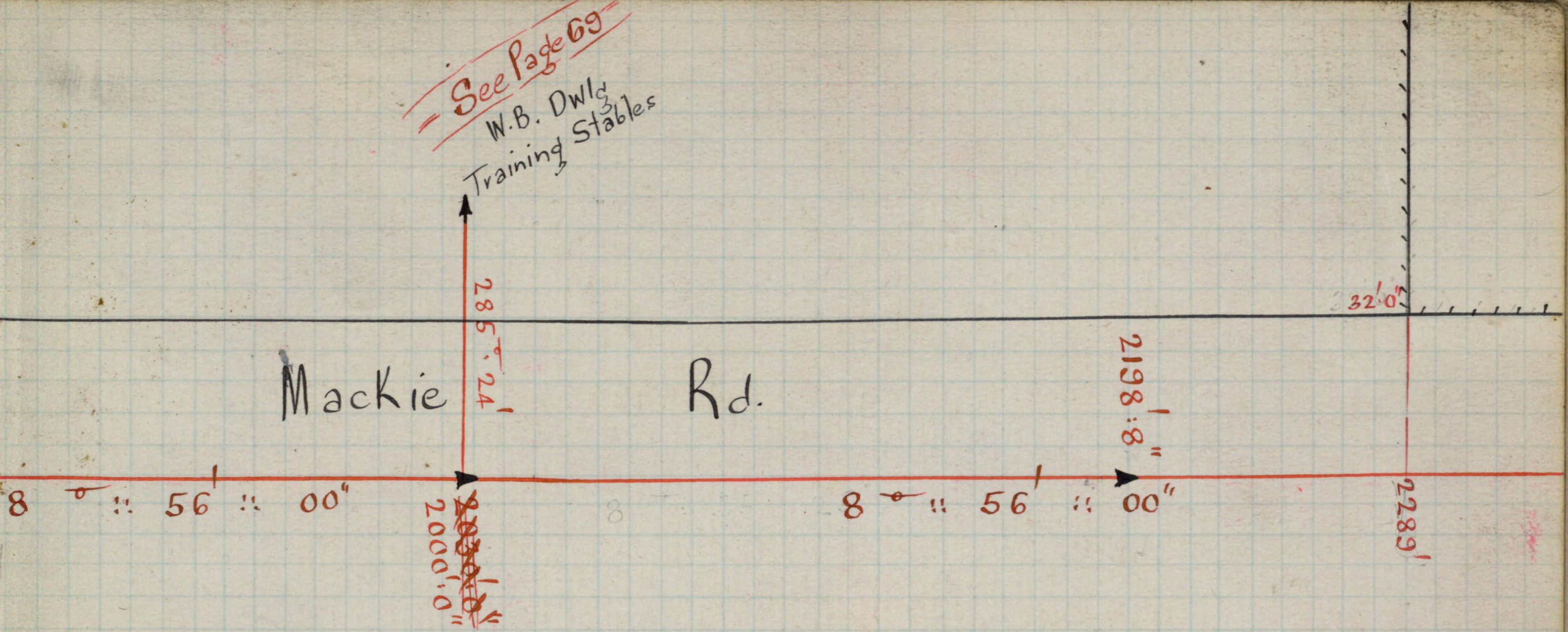
W. B. Dwlg.
See Page 69



Brick Dwlg.
See Pages 109 & 110

See Pages 109 & 111
Maratjah St.

See Page 69
W.B. DWL₃
Training Stables



W.B. DWL₃
(On Plan)

652
293
389

188.55.25
89.54.30
201.10.2
MINI
1591
2932
4362

Vacant

8 56' 00"

Mackie Rd.

Vacant

0
89° 54'
359° 36' 20"
89° 54' 5"

2933.412

Concrete
Cement

M.M.B. 927
1791'.8"

278
567'0"
50' 00"
1224'.8"

F.P. 2928

F.P. 2878.4

See Pages 17 and 144

North

Rd.

M.M.B. 928
100° 24' 44"

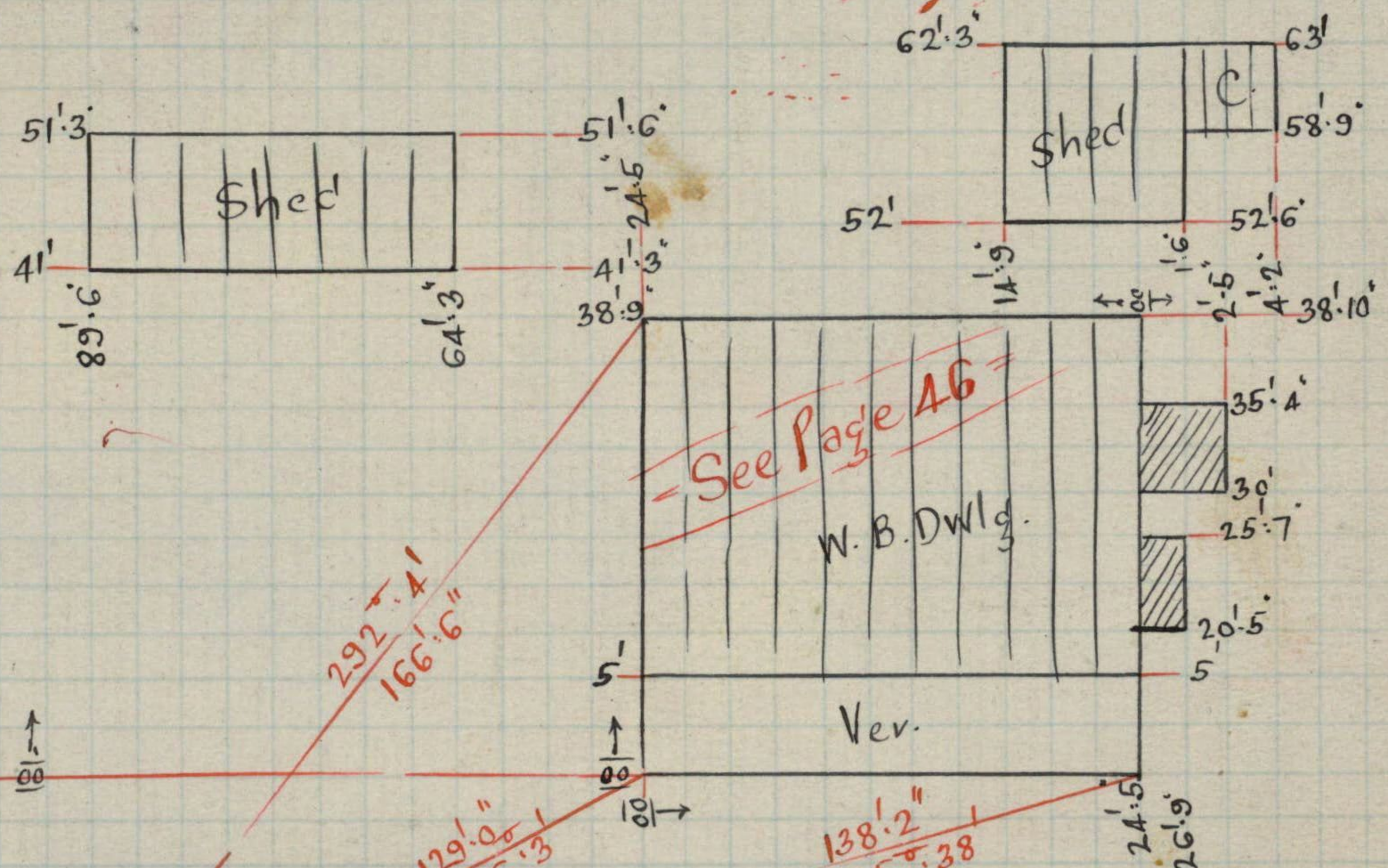
M.M.B. 929
1385.2
98° 7' 54"
72.066
M.M.B. 1886

See Page 53
144

179
5
12

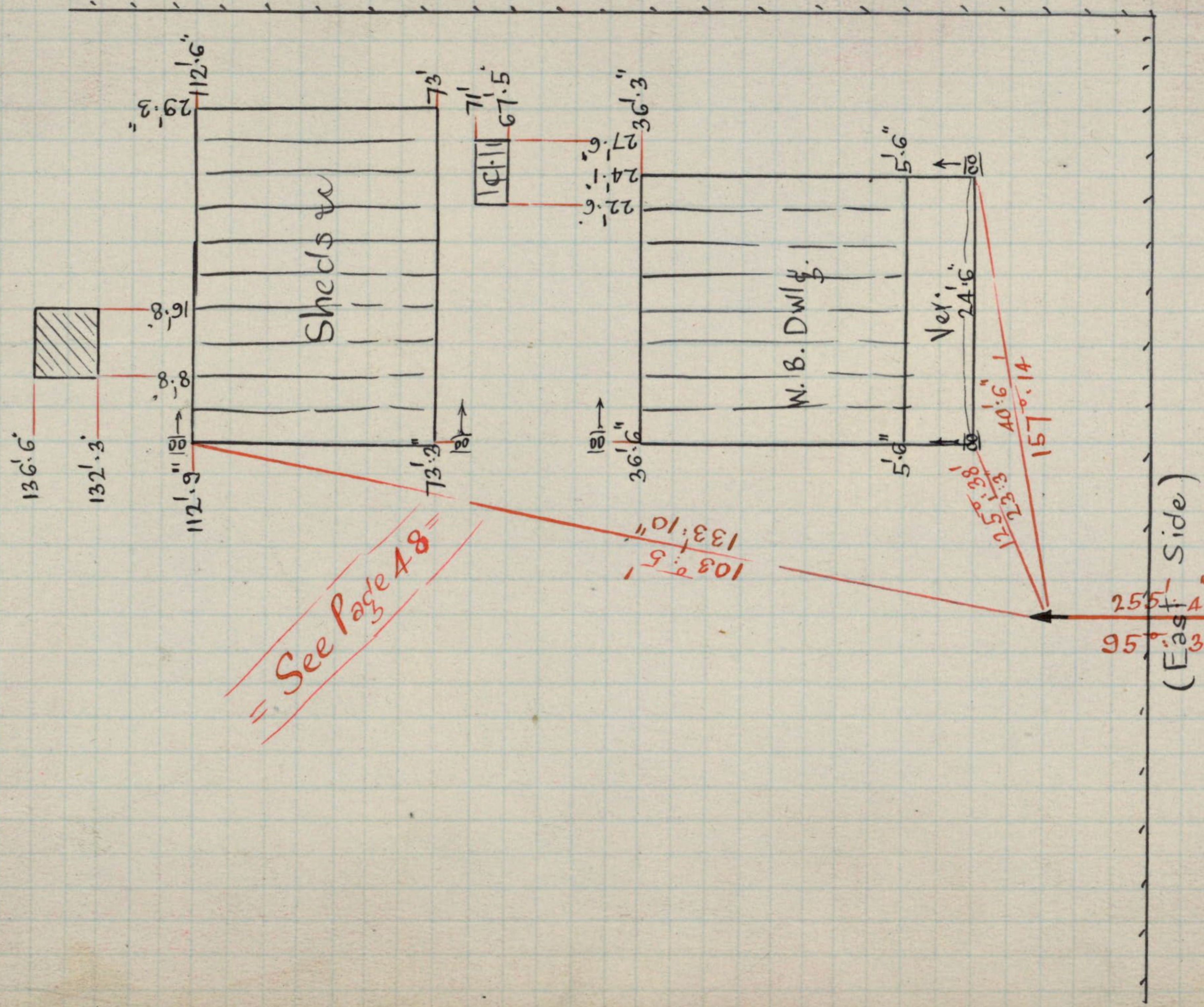
1791.8
 - 567.0

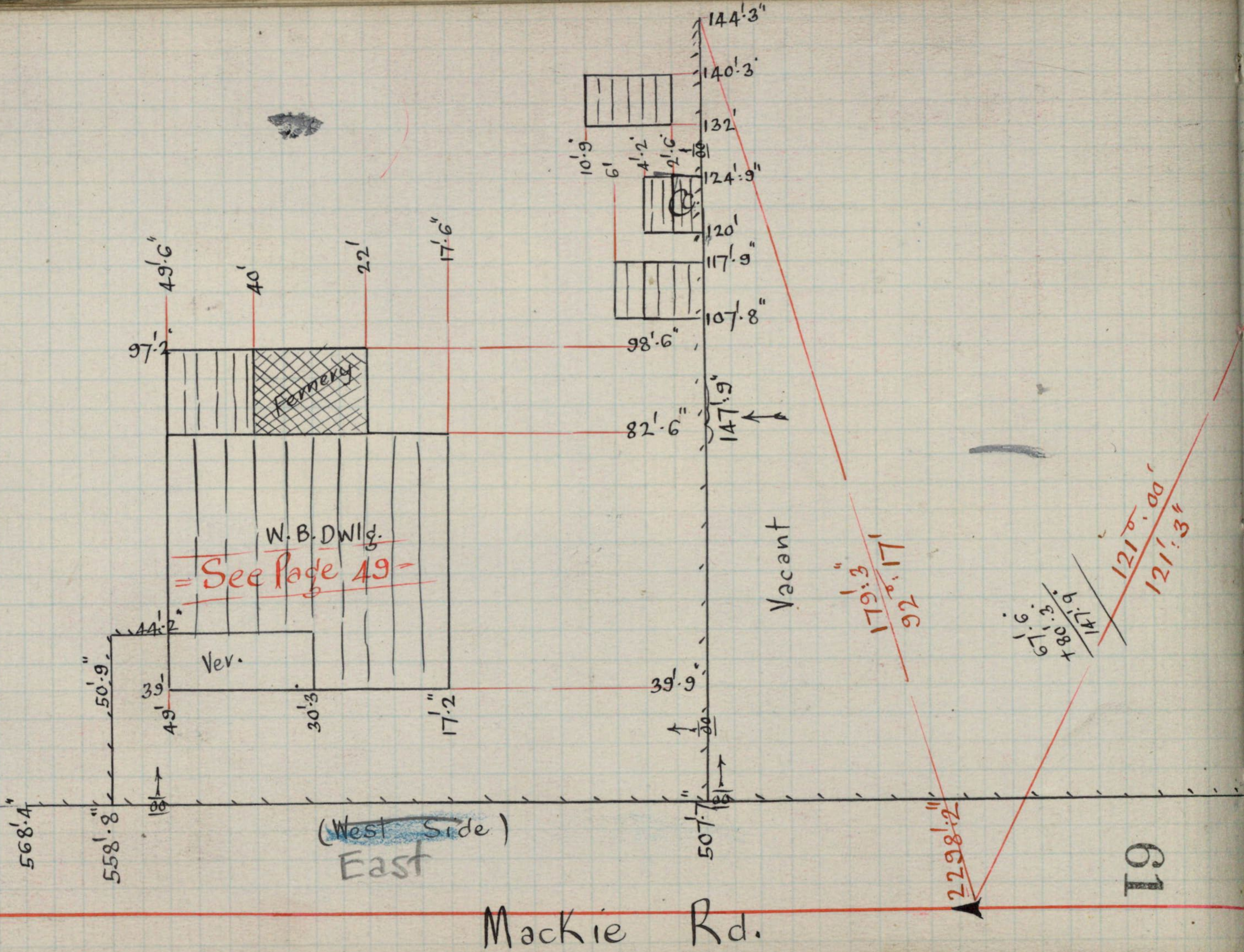
 1224.8

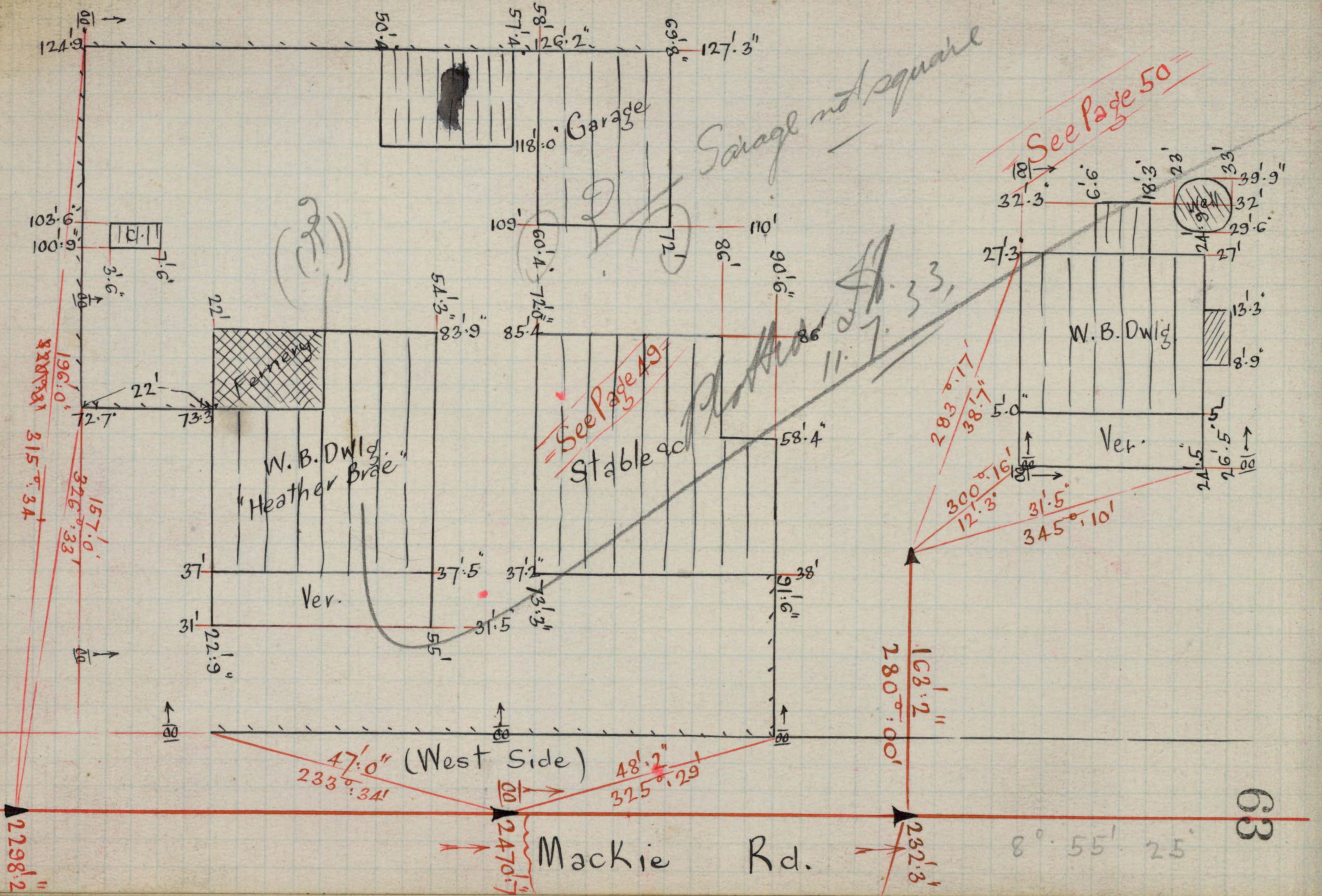


1:866
 Mackie Rd.

6.7
" 6.1
" 6.9
74.2
Manure
55.6 Pit

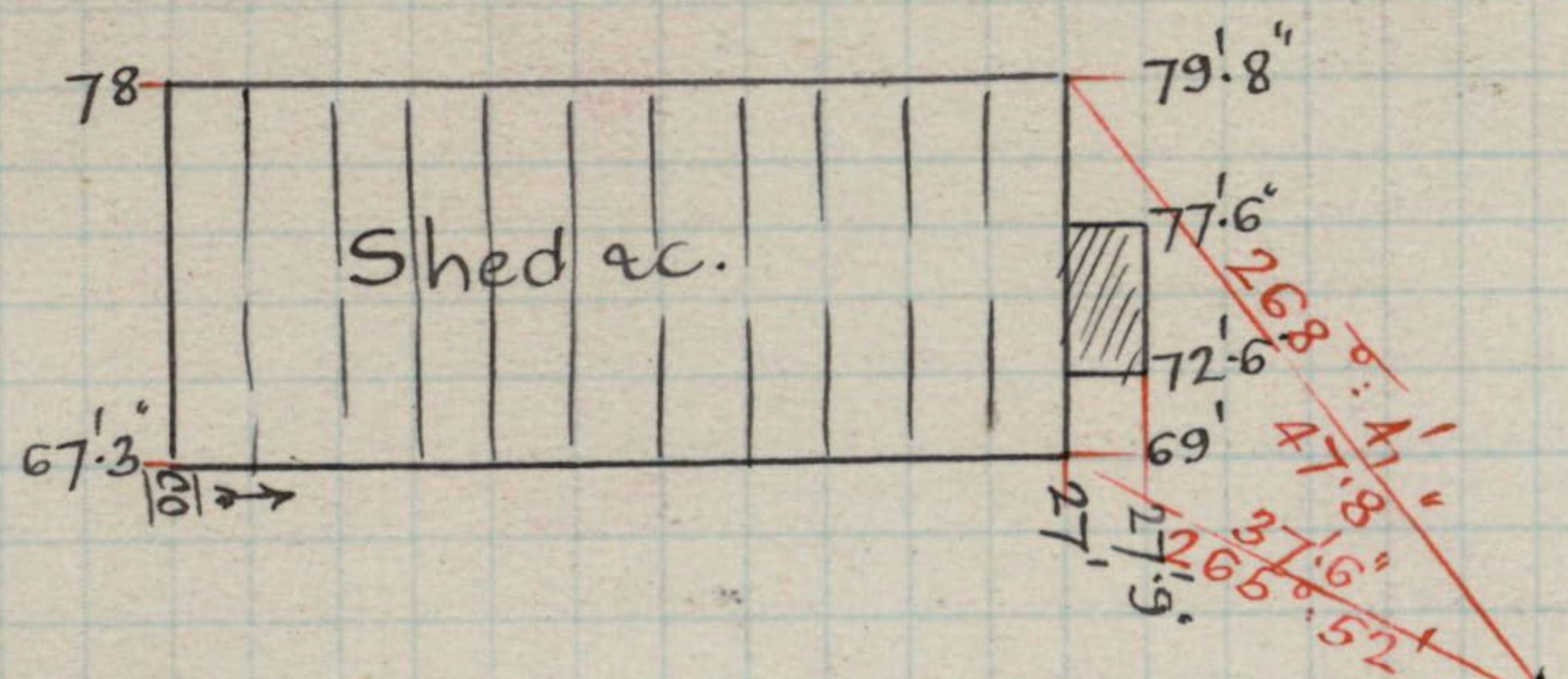




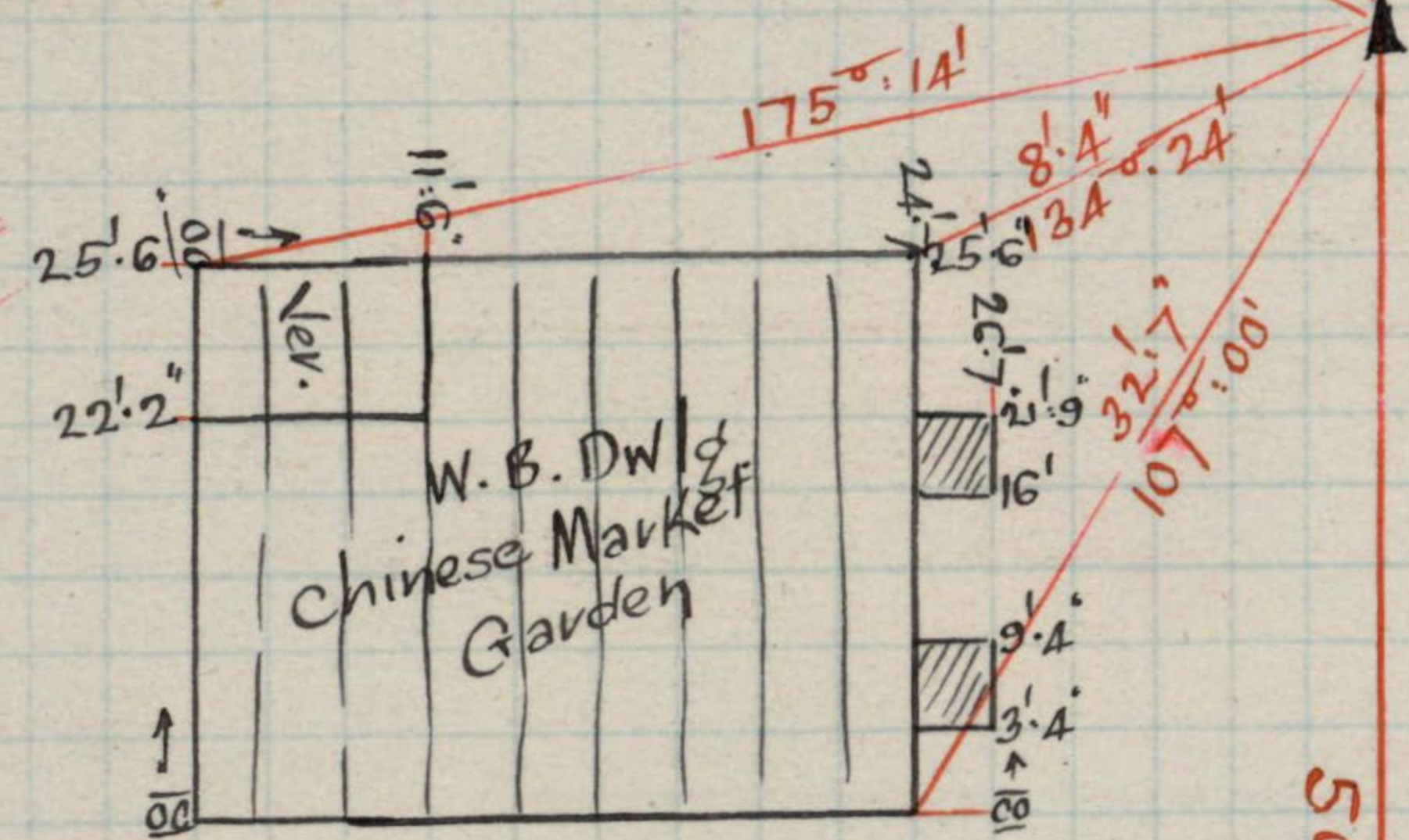


See Page 50

See Page 49



See Page 48



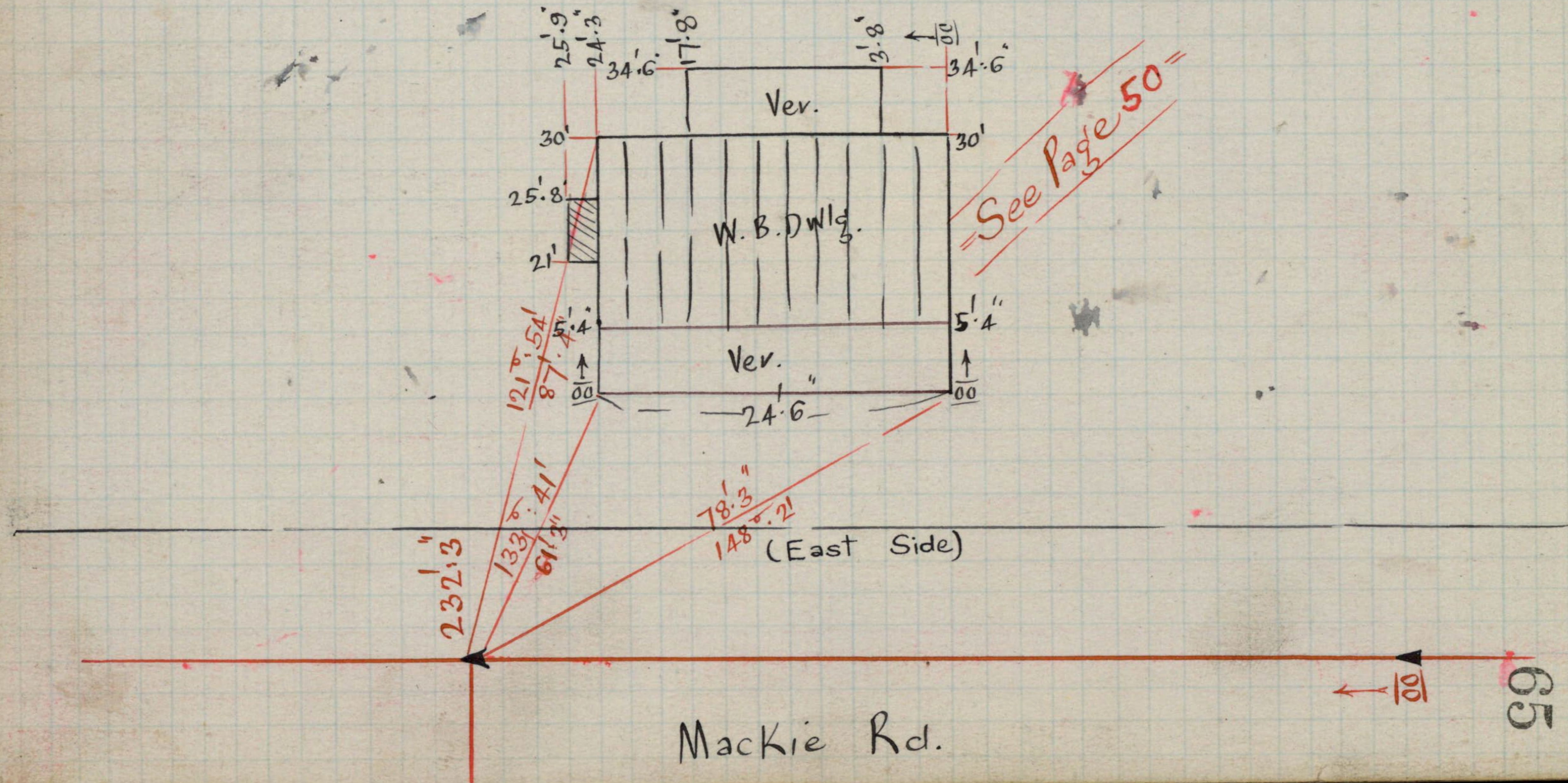
4-9
3-4

(West Side)

See Page 48

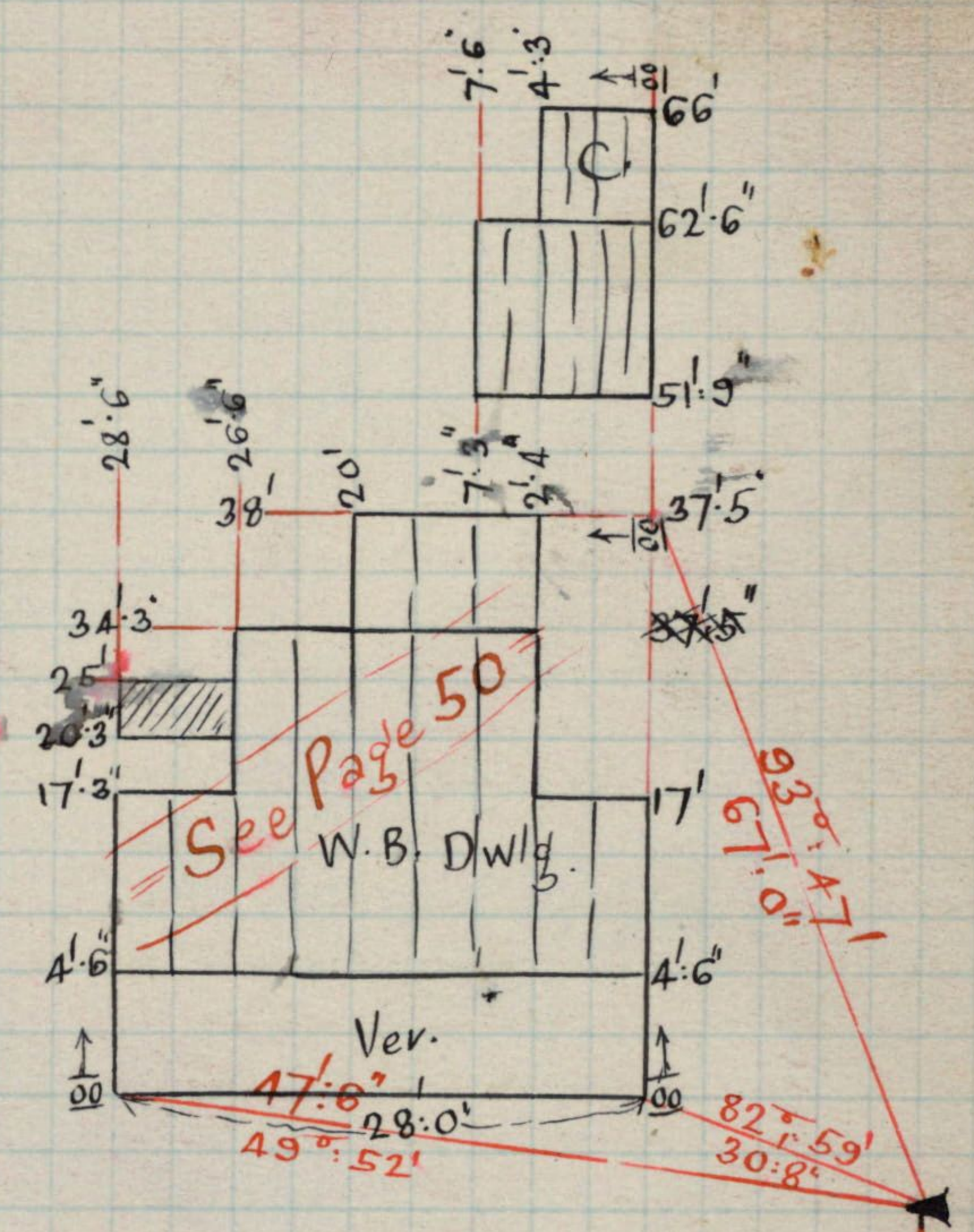
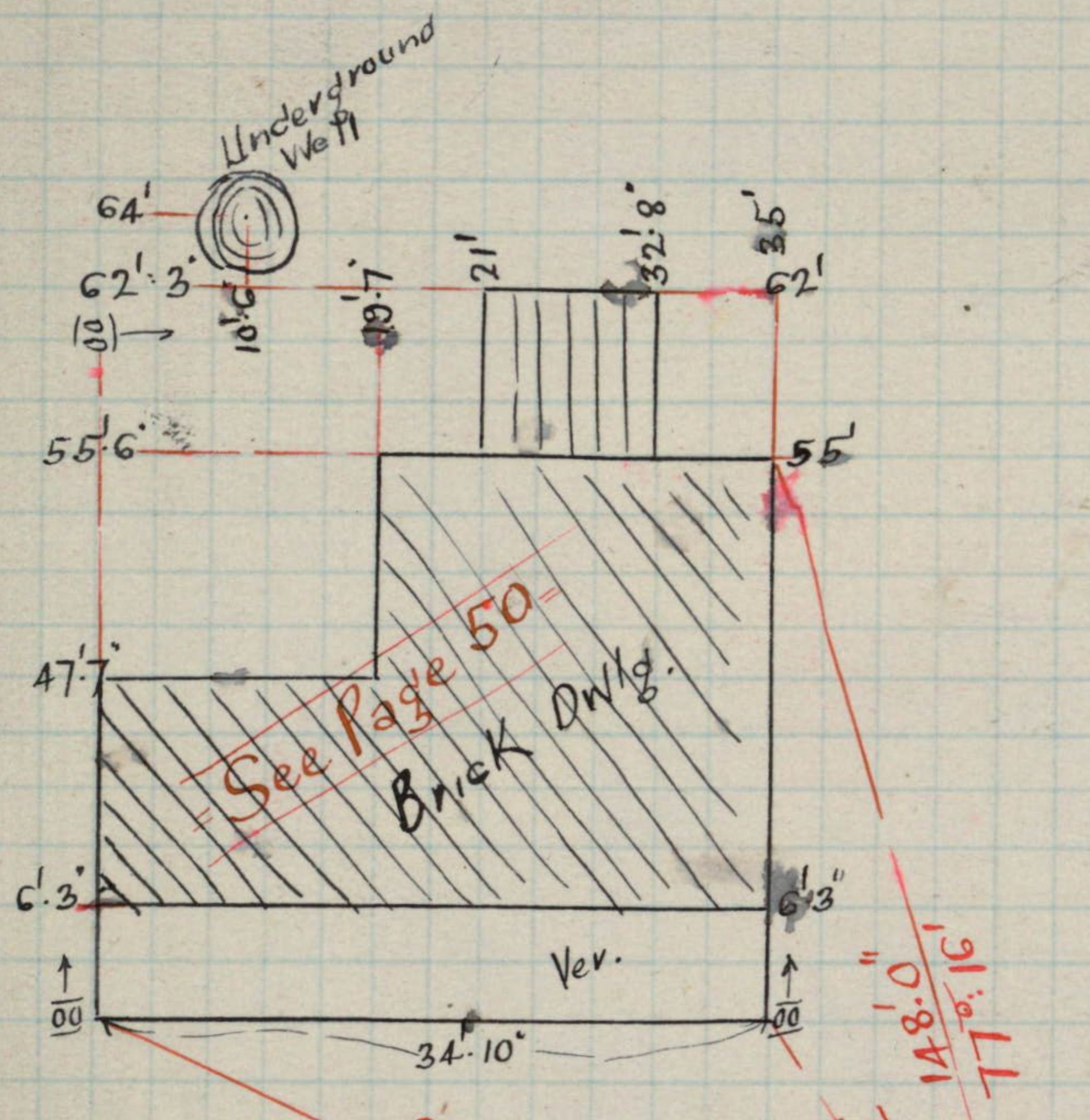
Mackie Rd.

509'4"
279'37"
2298'2"



See Page 50

Mackie Rd.



Mackie Rd.

(East Side)

99

375' 7"

320' 9"

98' 58"

82' 59"

30' 8"

47' 6"

28' 0"

49° 52'

99' 6"

65' 32"

148' 0"

11' 16"

51' 53"

121' 6"

9' 17"

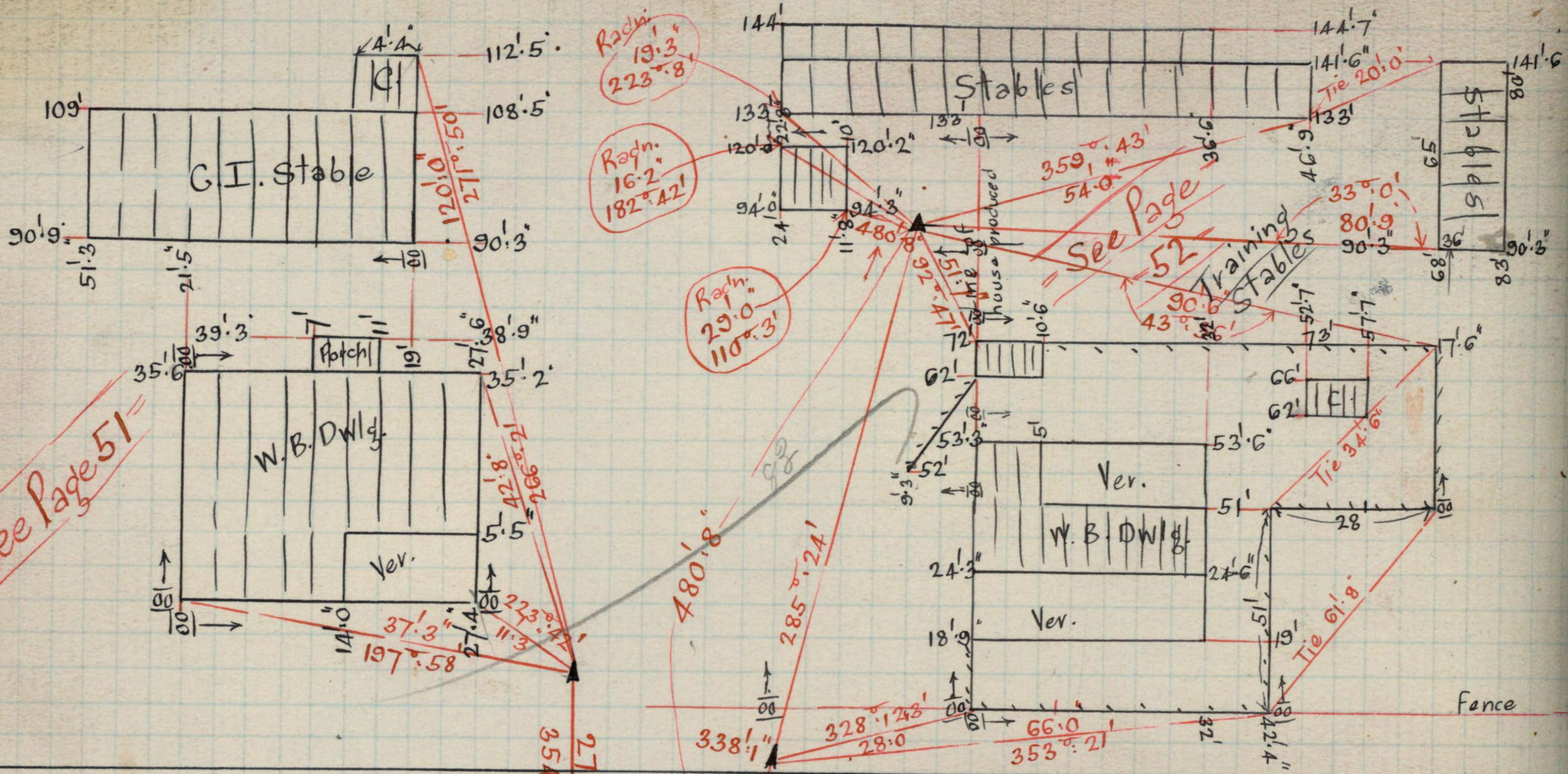
6' 3"

34' 10"

47' 7"

62' 3"

64'



See Page 51

See Page 52

Radn.
19.3
223.8

Radn.
16.2
182.42

Radn.
29.0
110.3

142.7

958

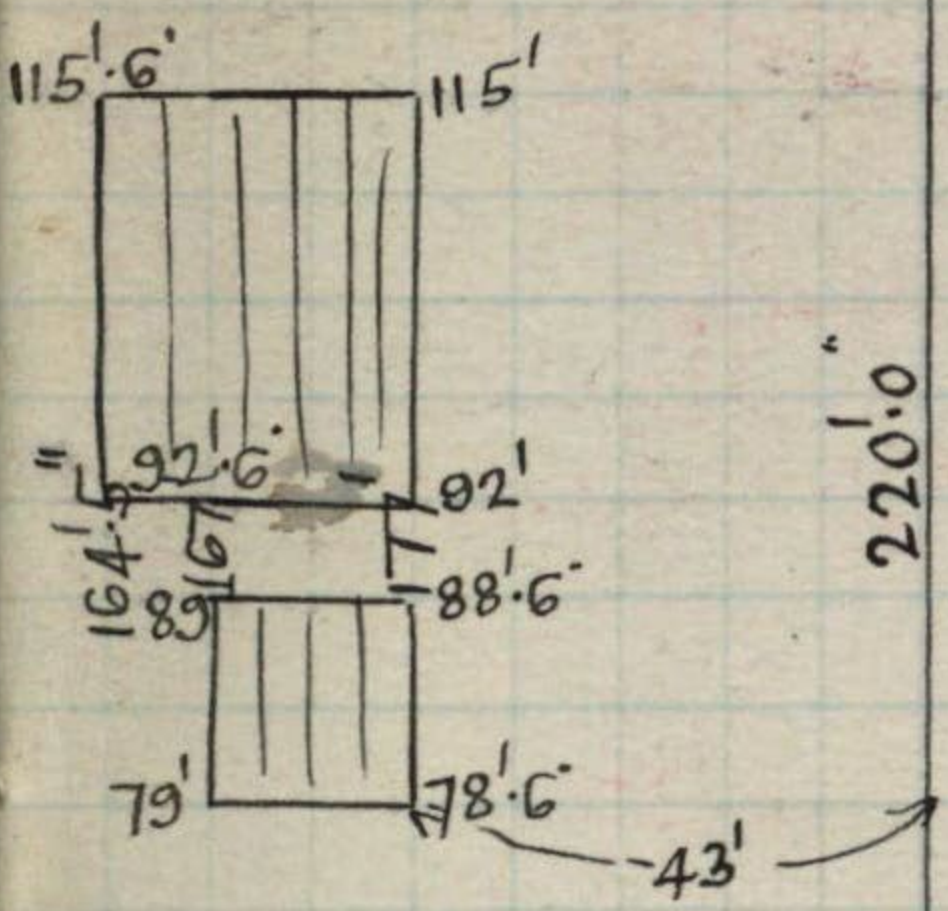
480.8
-142.7
338.1

(West Side)

Mackie

2000.0
Red.

69



produced $\frac{1}{100}$

Mackie Rd.