

Mackie Rd.

1150-202

LP 12856

W.B. Dwlg.
(On Plan)

Pipe

370'8"

517'3"
514'6"
8'9"
8'9"

71

567'0"

57'9"
215°36'

39'6"

51'8"

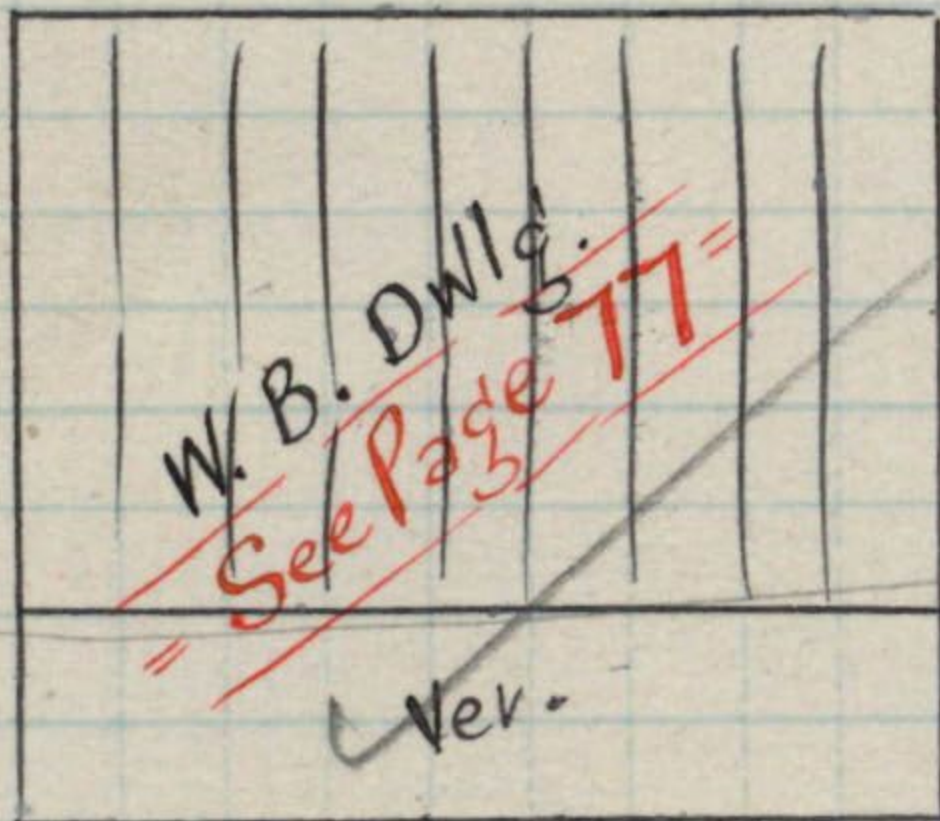
North Rd.

7'

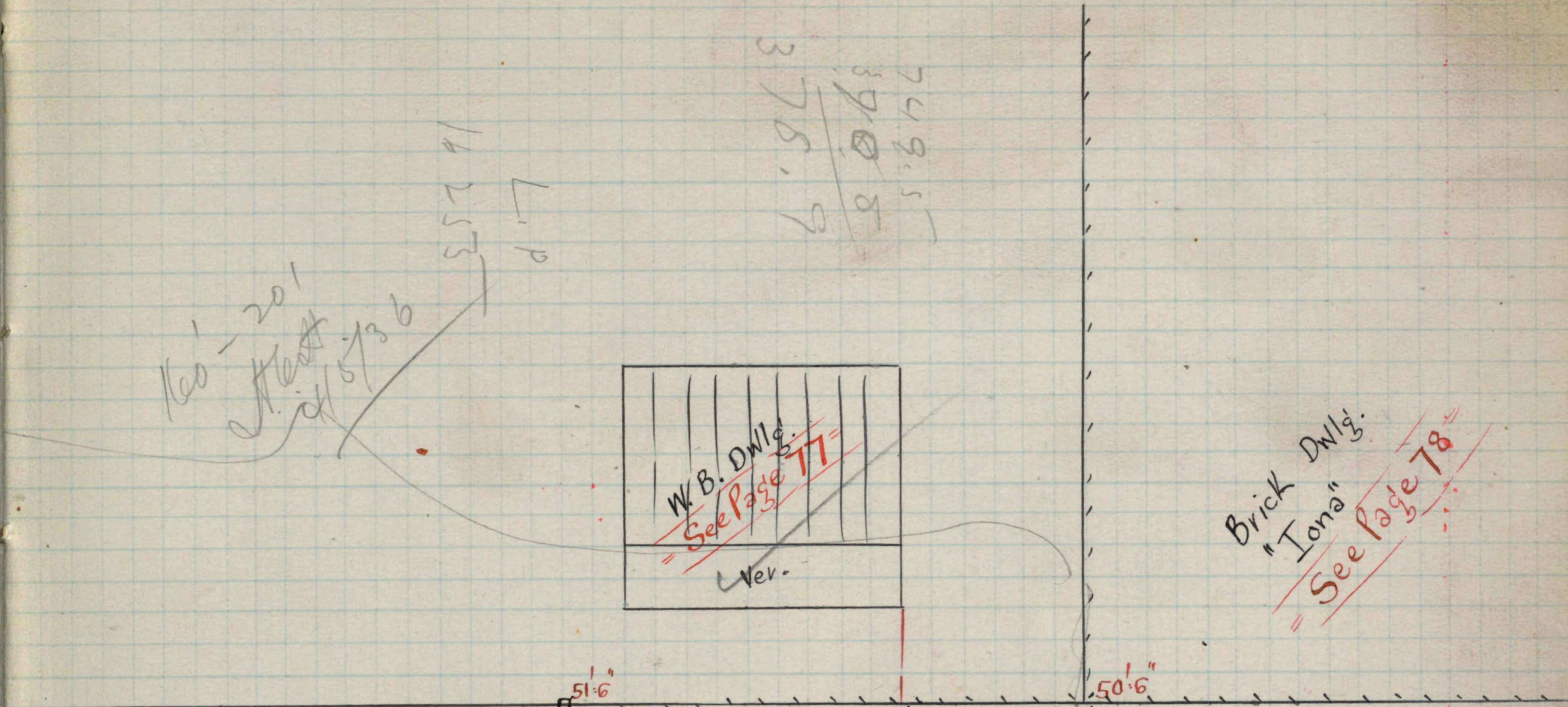
160' - 20'
1/2" 5/36

L.P.
14253

749.5
378.9
370.5



Brick DWlg.
"Tona"
See Page 78



48'

M.M.B.
No. 927

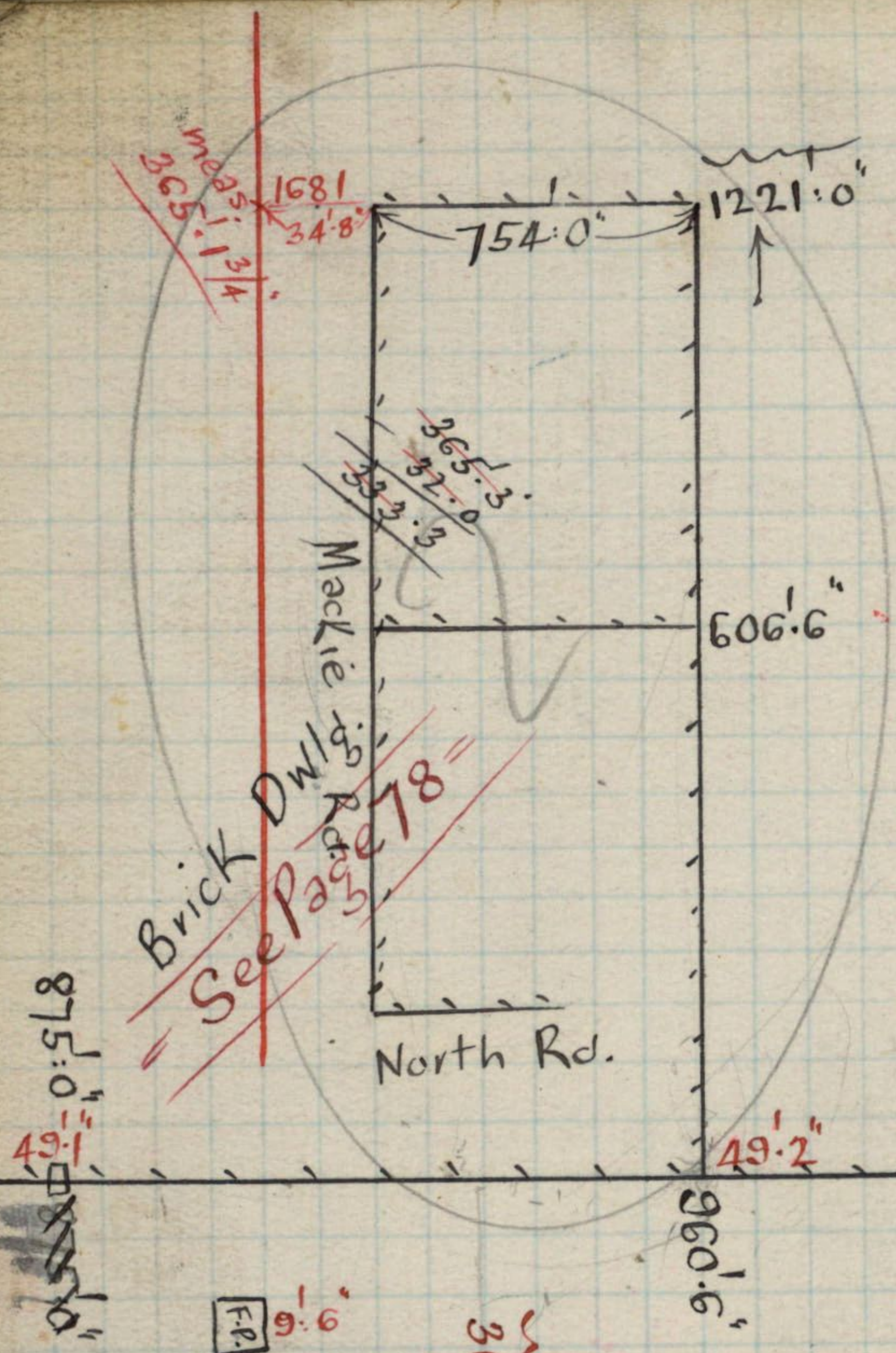
x 6' 10" FR

x 12' 6" AC
15' 10" FR

x 24" VC
5' 10"

278' 50" : 00"

North Rd.



W.B. Dwlg.
 = See Page 79 =

W.B. Dwlg.
 = See Page 79 =

875.0' = 49.1'

960.6' 49.2'

1064.3' 48.2'

1120.5'

F.P. 9.6' 365.3' M.M.B. No. 926

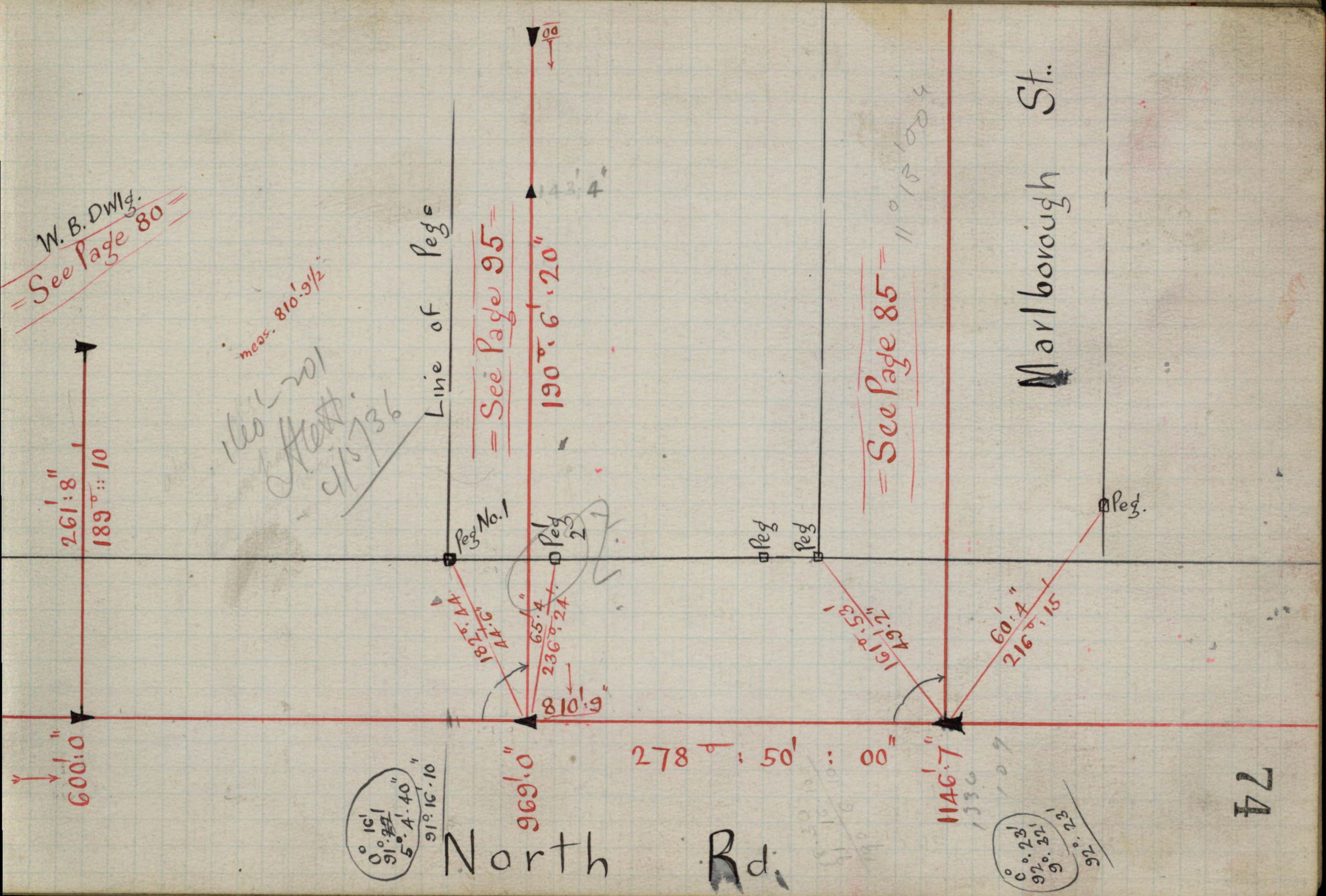
278 50:00

278 50:00

North Rd.

W. B. DWIG.
See Page 80

meas. 810'-9 1/2"
1160'-201
9/15/36

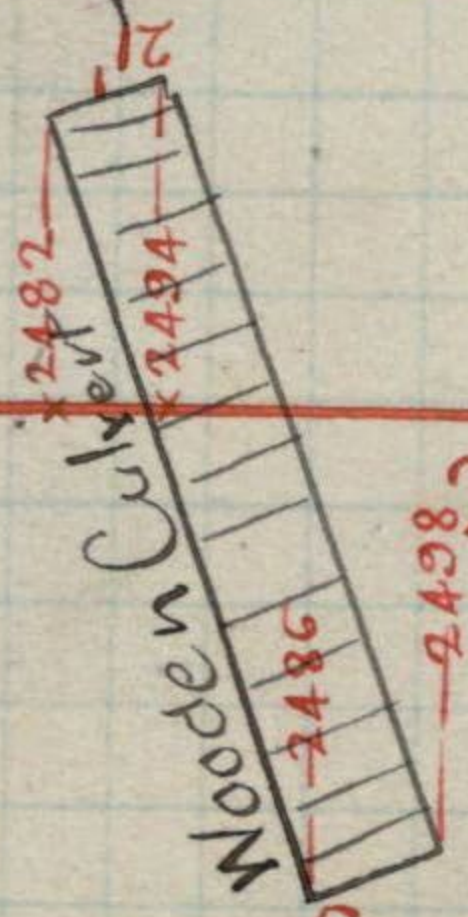


Box's Estate

Line of Pegs

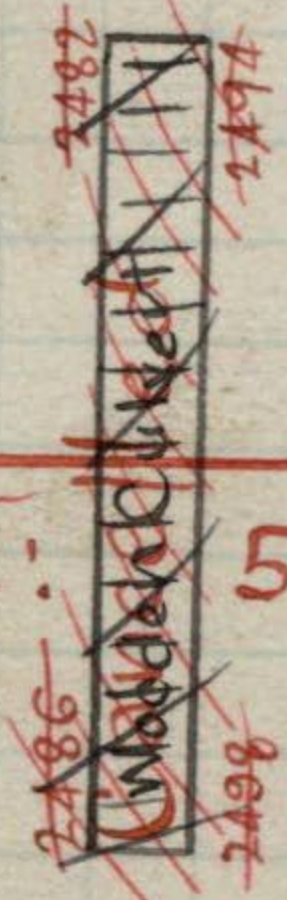
1336'0" 43'3" 189° 31'

Drain



North

278 50' 00"



Drain

11-201
5/5/36
W. B. D.W.L.
See Page 83

Rd.

2515'1" 200'0" 189° 23'

Crosbie Park Av.

75

2843'9"

FP. 2847.3
2'-0"

Murumbena Rd.

188'-15"
228'-0"

2878'-8"

196'-1-27"
26'-2-1"
214'-41"

W. B. Dwlg.
See Page 82

162'-10"
270'-50"

Vacant

See Page 81

Brick Shop

160'-20"
575/36

meas 3213'-6 1/2"

See Page 97

M.M.B.
G.W.N.
No. 1538
3213'-3"

28798
3347

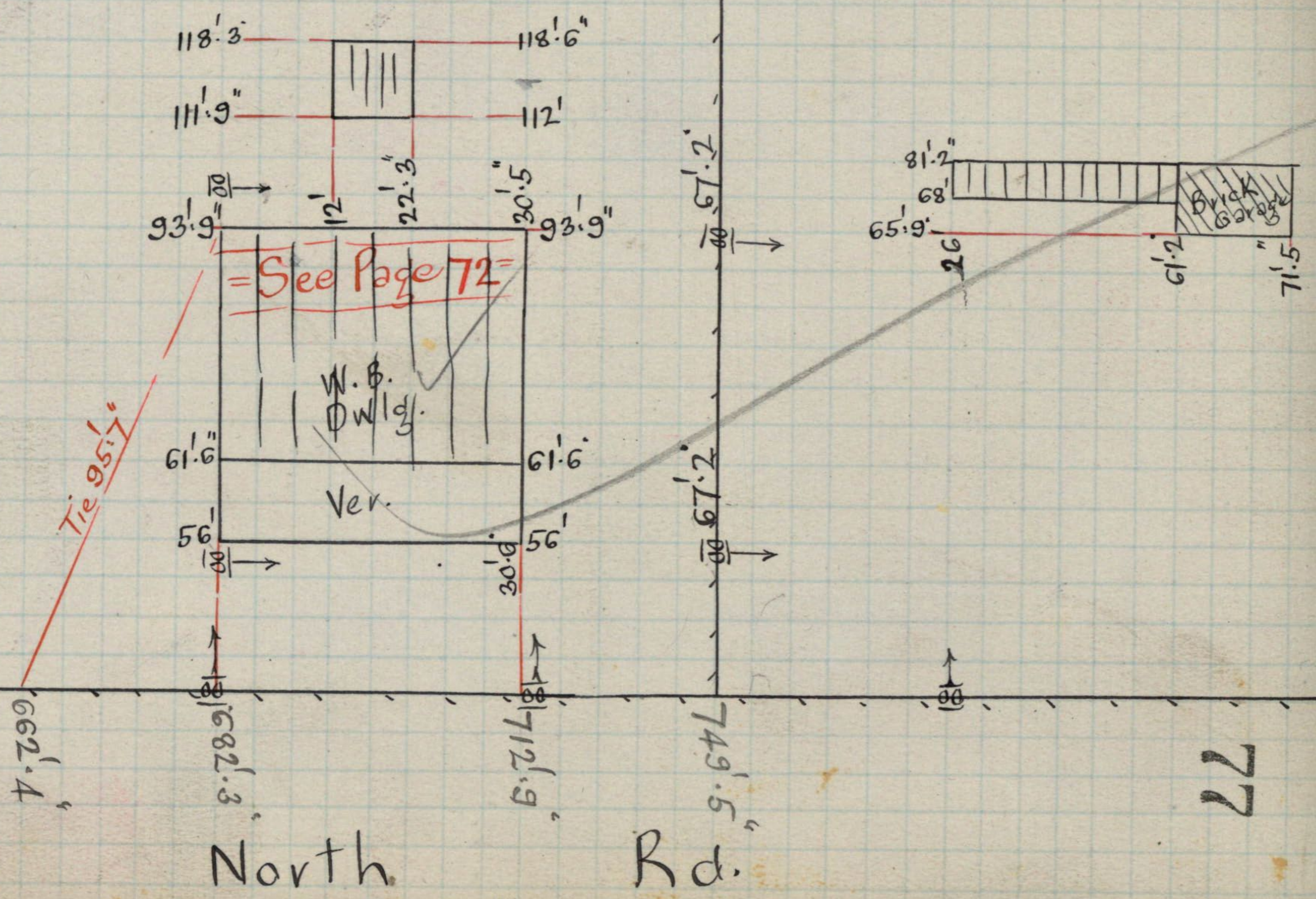
3079'-10"

55 : 1 : 189 : 681

East Boundary Rd.

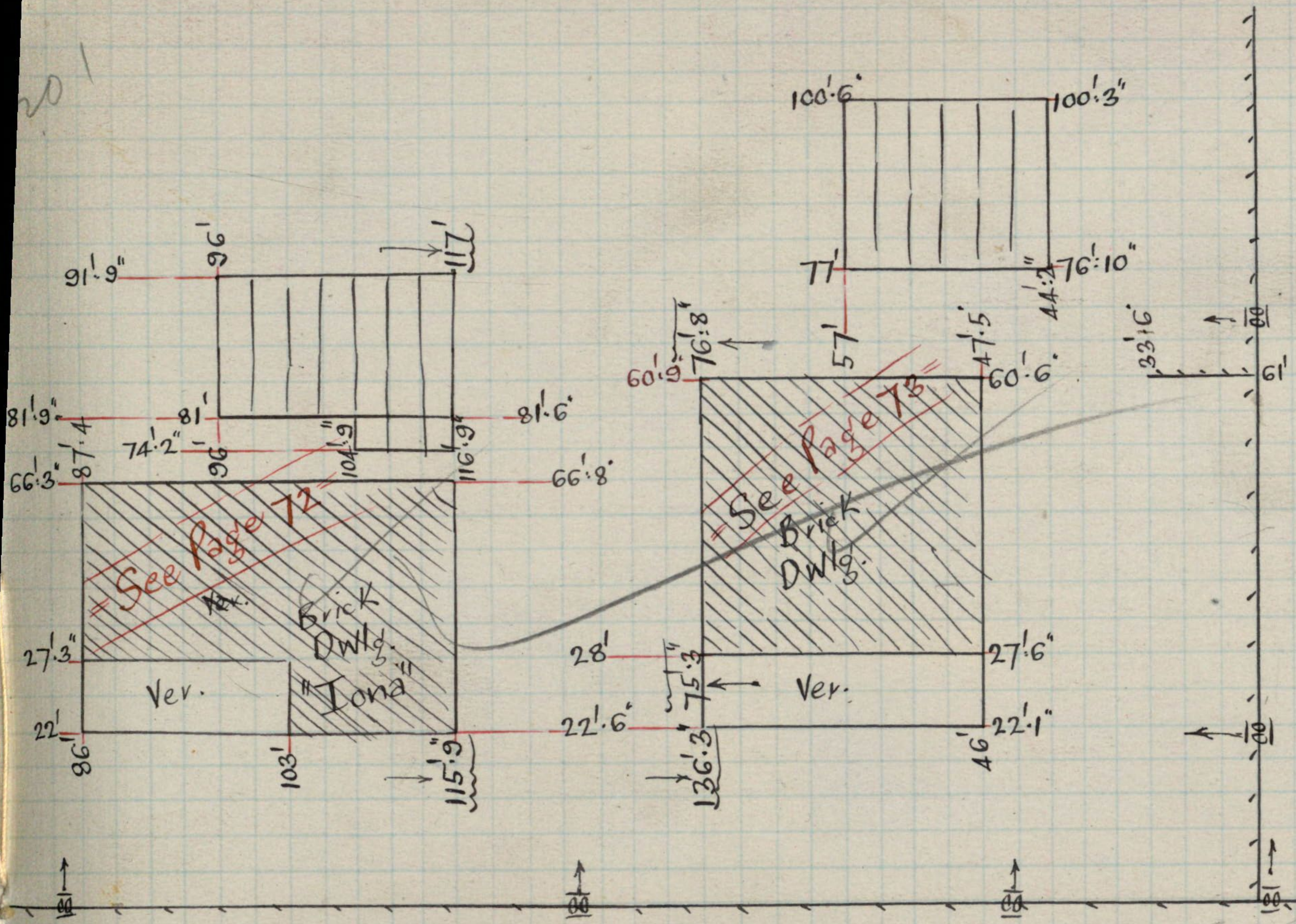
+ 20.6
 115.9
 136.5

36.9
 30.6
 67.5



100'

77



5" F.L.C.
 5' 5 1/2"
 3' 5 3/4"
 5' 9 1/2"
 5' 6 1/2"
 2' 0"
 11' 5 1/2"

6' 9" 0 2
 6' 7 1/4
 5' 3 1/2

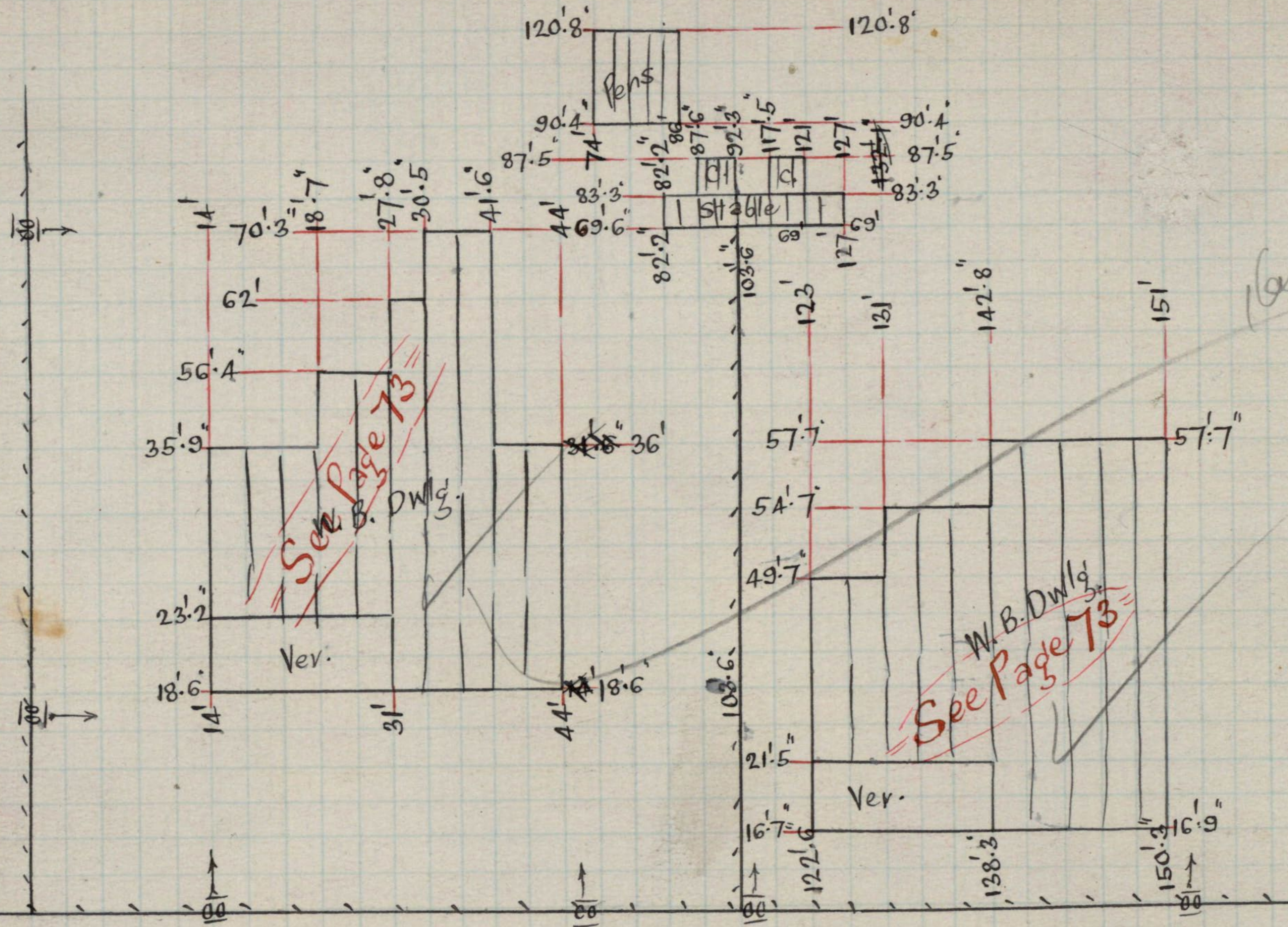
W.B. Dwlg.

96' 6"
see

North Rd.

Brick
Dwlg.

266

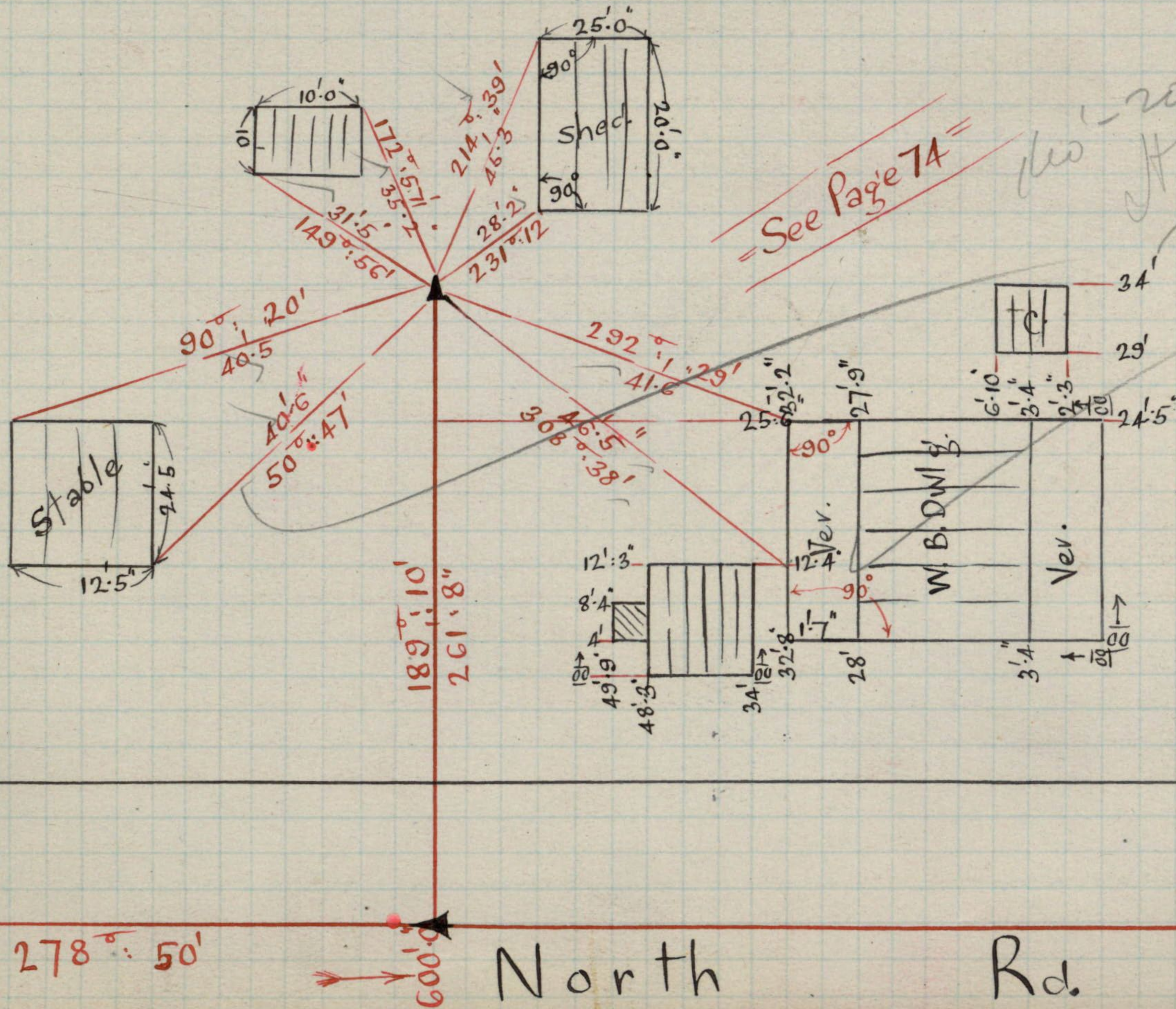


See Page 73

See Page 73

160' - 20'
eff. H.A.

North Rd.



See Page 74

20' West

North Rd.

98°:50':00"

3079'.10"

146°:6'
55':10"

44'.9"
165°:23'

20'.1"

20'

20'

East

Buck Shop

25'

25'

East Boundary Rd.

4495
7500
7
Feb 34
R.P.P.

See Page 76

103'.6"

108'.6"

20'.7

8'.4

4'.7

← 18'

103'.6"

108'.6"

209'.6"

150'.4

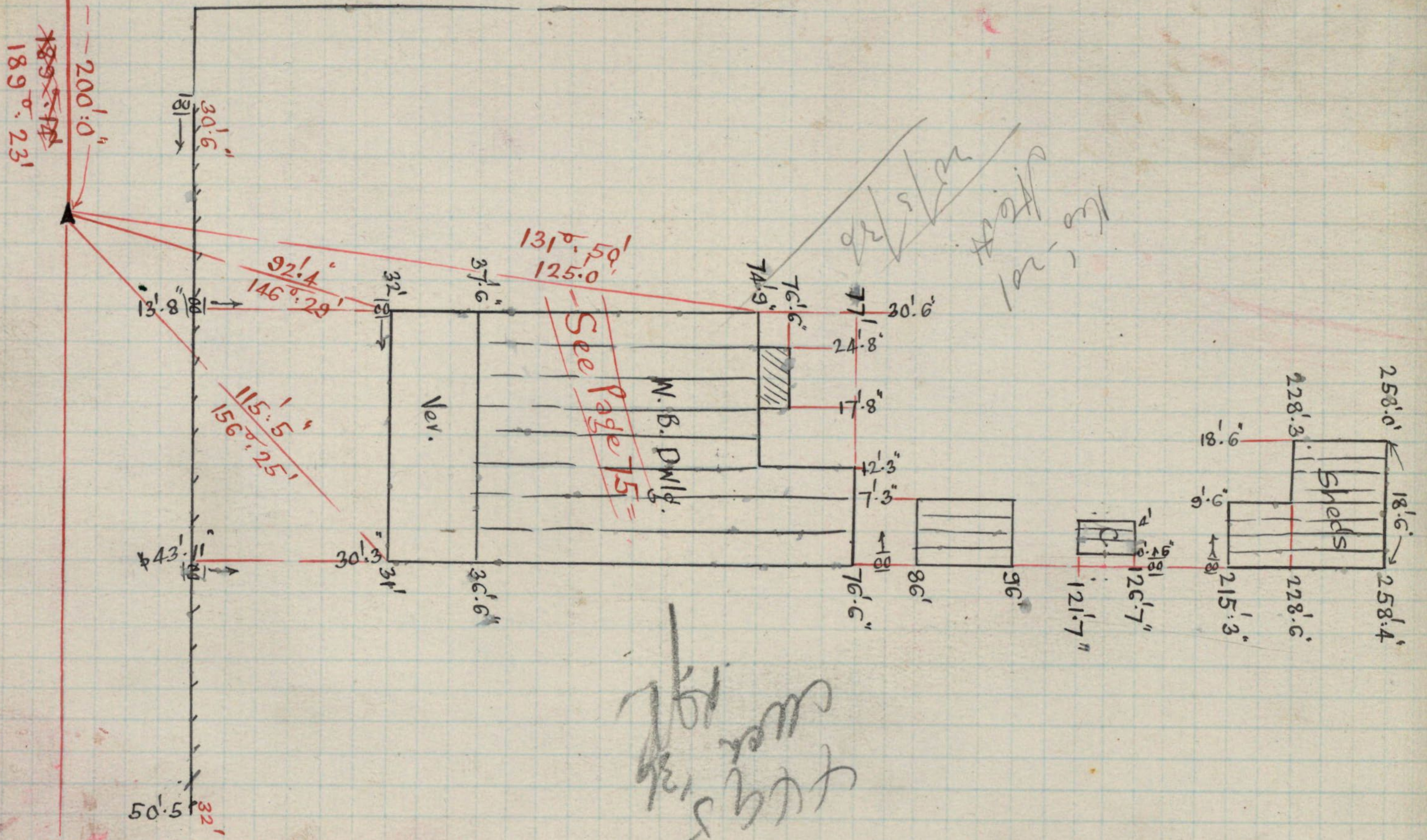
200'

140'

18'

North Rd.

Crosby Park Av.



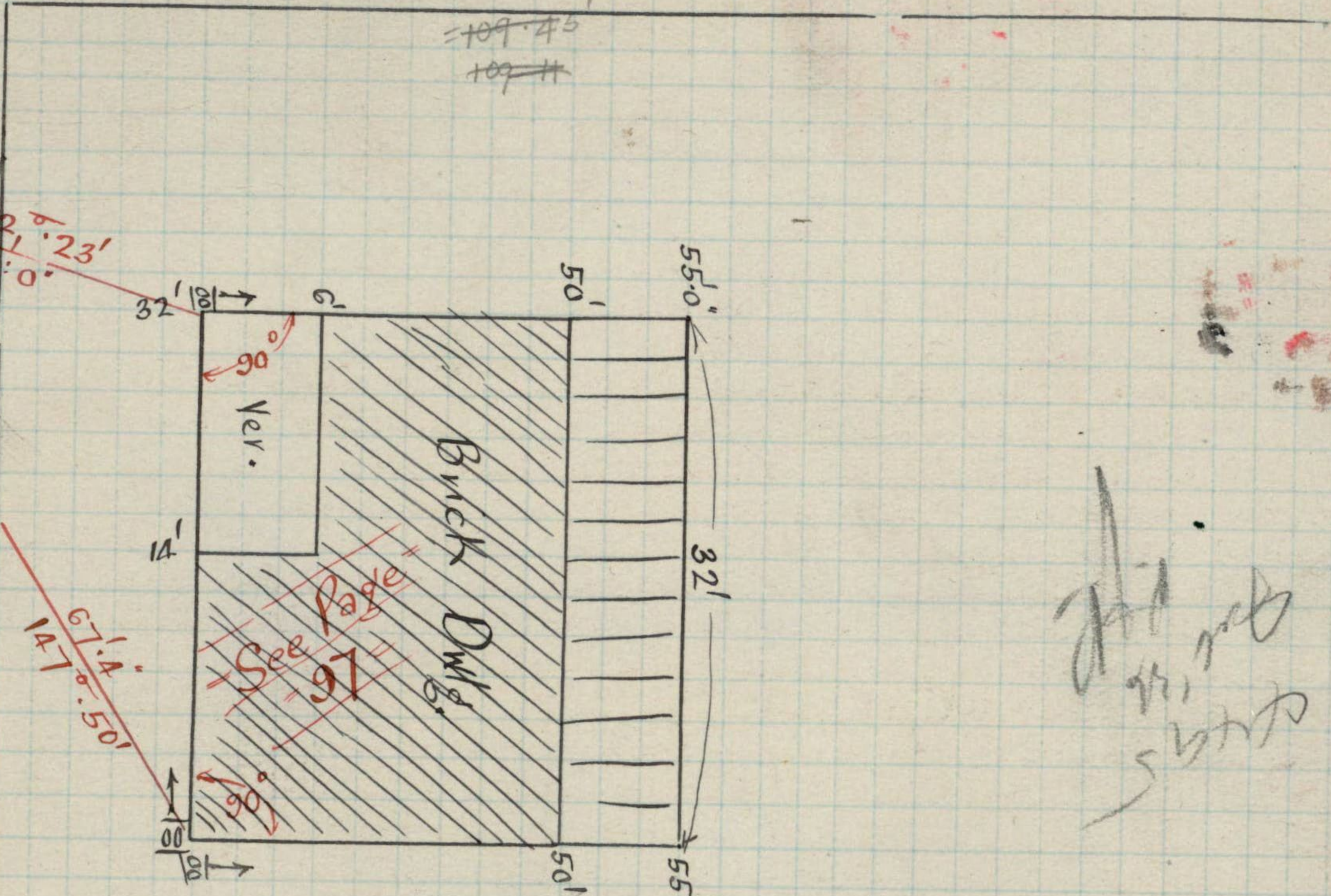
4495
Crosby Park Av

1676'8" M.M.B. No.

~~48'0" N = +122° 23'~~
~~67'4" S~~ NE 147° 50'

North Rd.

400'0"
1276'8"
9'0" 1' 55"
East Boundary Rd.
(East Side)



Handwritten scribbles and notes, possibly including "See Page 16" and other illegible text.

98° 50'
92° 23'
191° 13'
11° 13' ✓

North

See Page 74

Rd.

278° 54' 00"

18'

Peg

Peg

Peg

Marlborough St.

11° 13' 00"

St.

Peg

Peg boundary

Peg 633' 5"

Peg

9' 10" 280° 26'

St.

D.P. 4493

812' 8 1/2"

316° 49' 209' 7"

No. 18

Peg

Peg

321° 42' 47' 2" 51' 9" 304' 5"

No. 70 Peg

35' 11" 36° 19'

85

812' 8"

86

Blenheim St.

See Page 93

35' 1" 151° 45' Peg
39' 7" 172° 32'

243° 22' 47' 6" Peg

82

Blenheim St.

= See Page 93 =

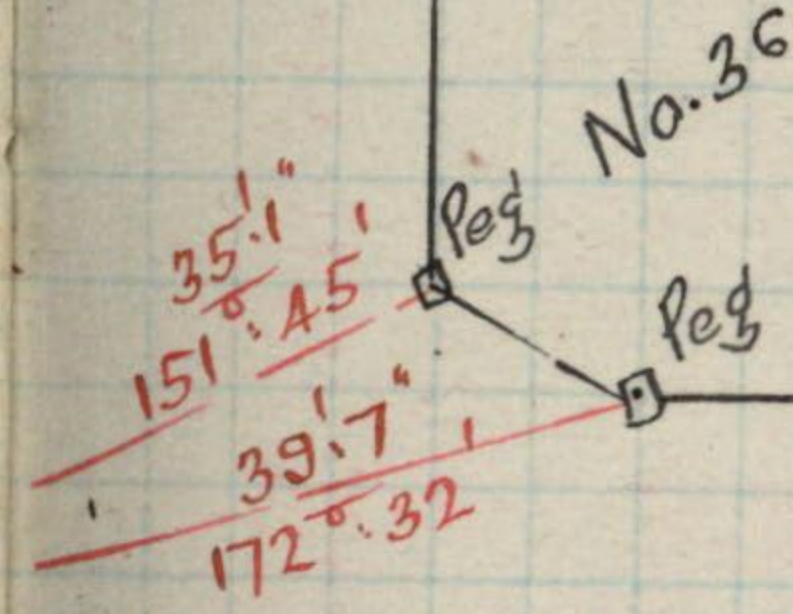
812.58
622.58
179.8

Dec 1, 201
4/5/36

D.P. 4493

1281.51/2

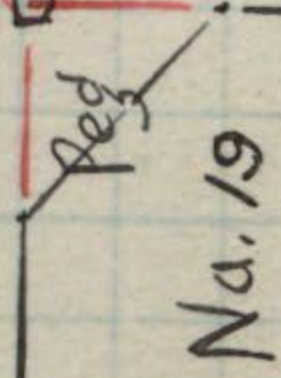
97° 22' 00"



191° 13' 00"

Marlborough St.

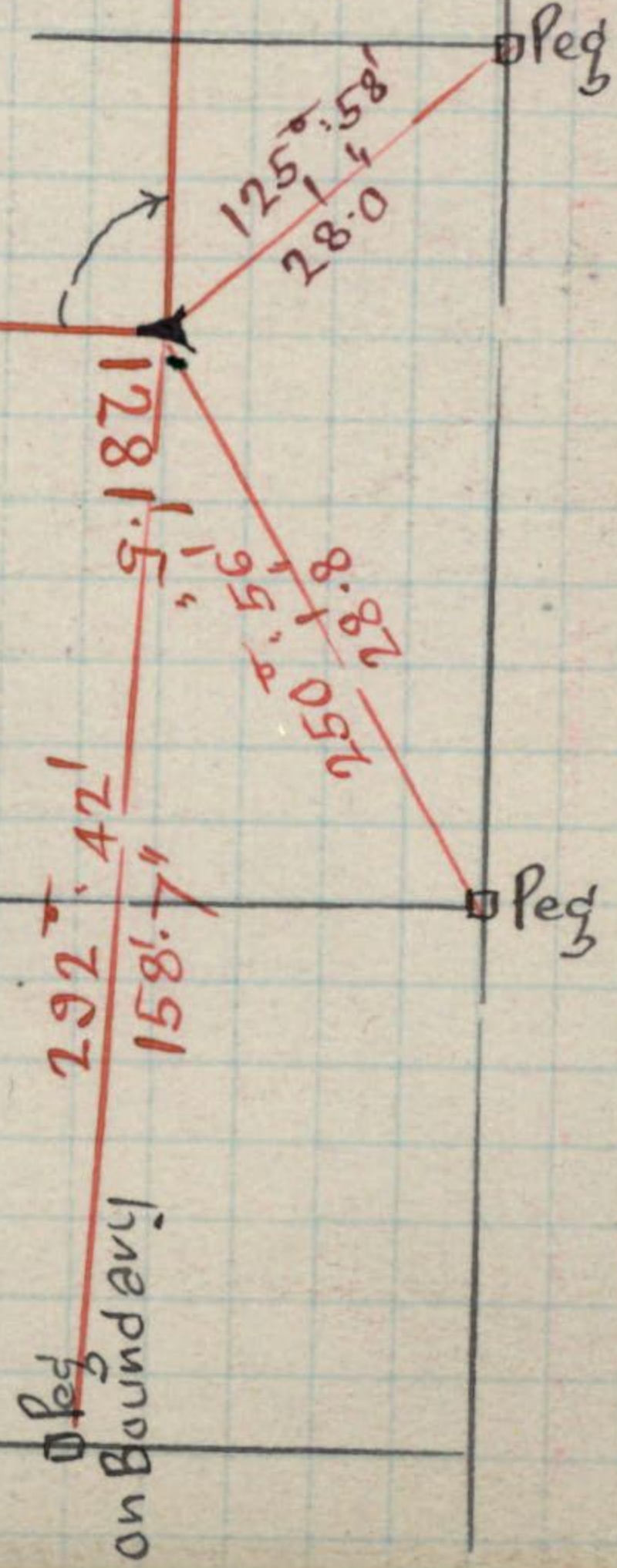
243.221
47.6

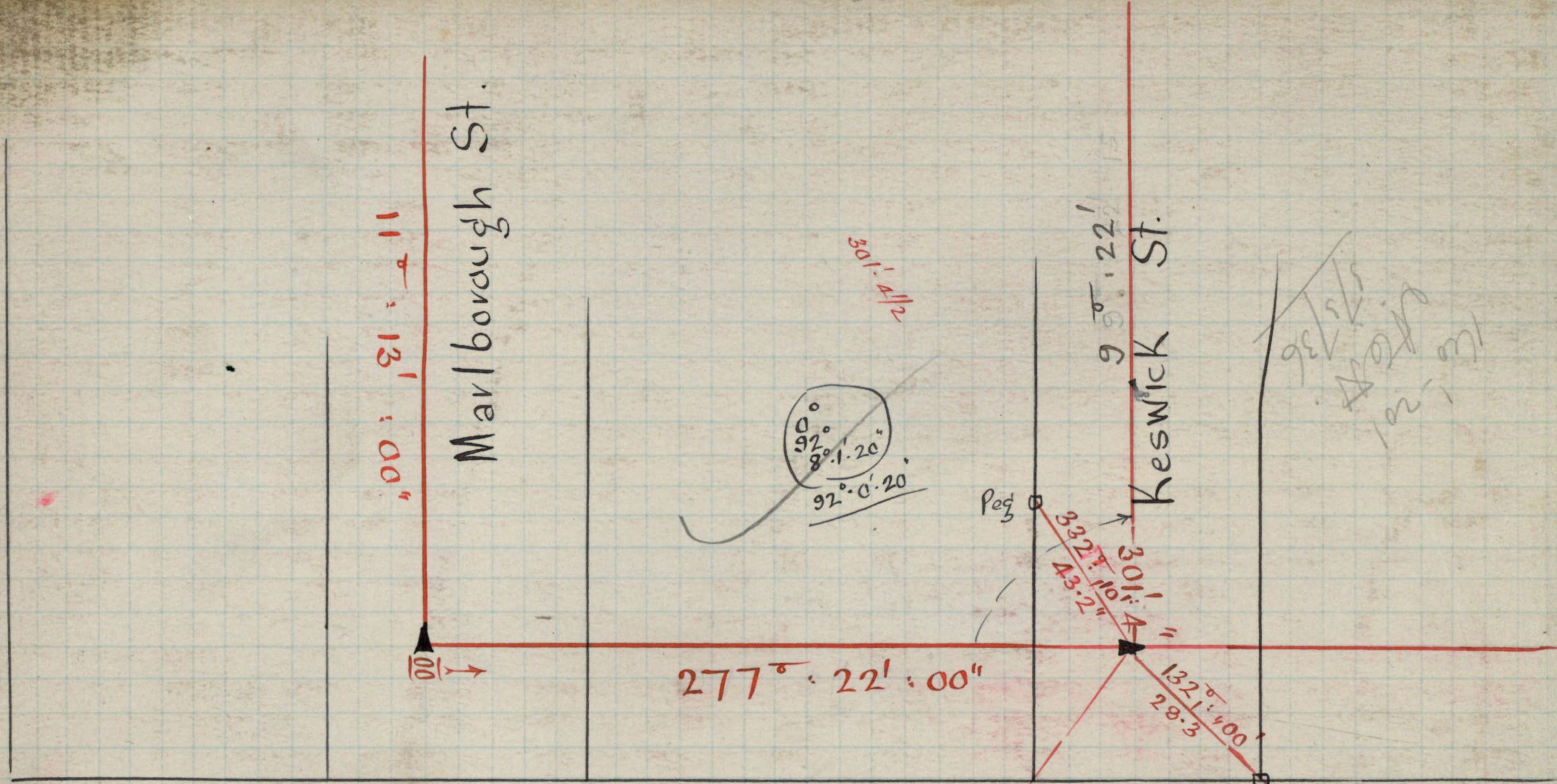


0° 8' 20"
348° 33' 40"
87° 8' 25"

11° 13' 55"
+86° 8' 55"
97.21

0° 8' 40"
344° 35' 40"
86° 8' 55"





98/5/36
 420/2
 102, 107

277
 92
 20
 D.P. 4493

0.
91° 59' 40"
8° 0' 10"
92° 0' 2"

277° 21' 57"

277° 22' 55.00"

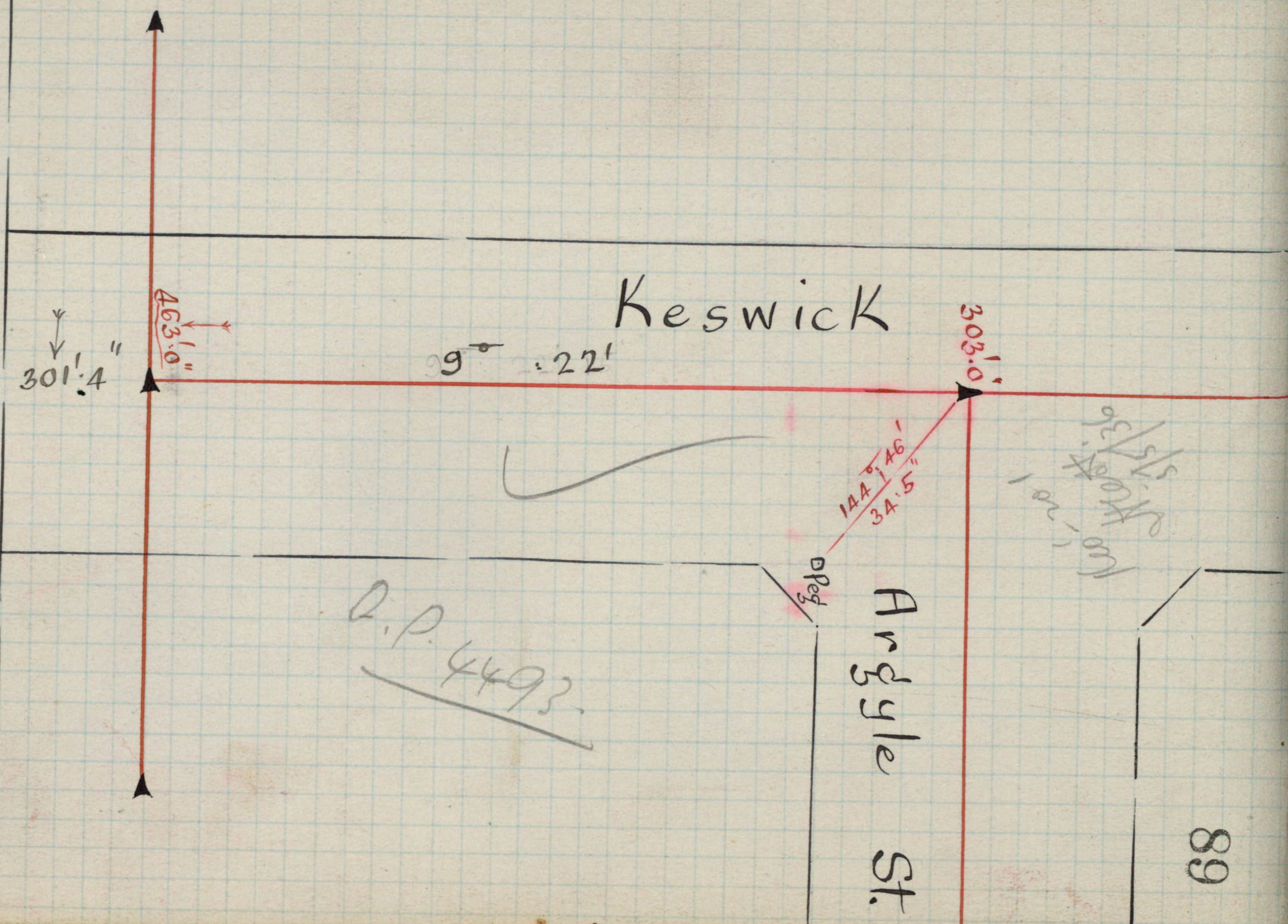
Peg

42.9"
254.7'

584.0"

91° 21' 9.57" 22' 00"

D.P. 4493



Keswick

Argyle St.

Q.P. 4493

301' 4"
463' 0"

9° 22'

144° 46'
34' 5"

303' 0"

51' 51"
51' 51"
51' 51"

Blenheim

St.

286'.3

See page 94

St.

9th 22'

D.P. 4493

P. P. 56m

Blenheim

63
Peg
64

St.

278° 21' 40"

47' 0"
310° 42'

00

27' 0"
161° 19'

Peg

189° 22' 00"

0°
88° 59' 40"
355° 59' 20"
88° 59' 50"

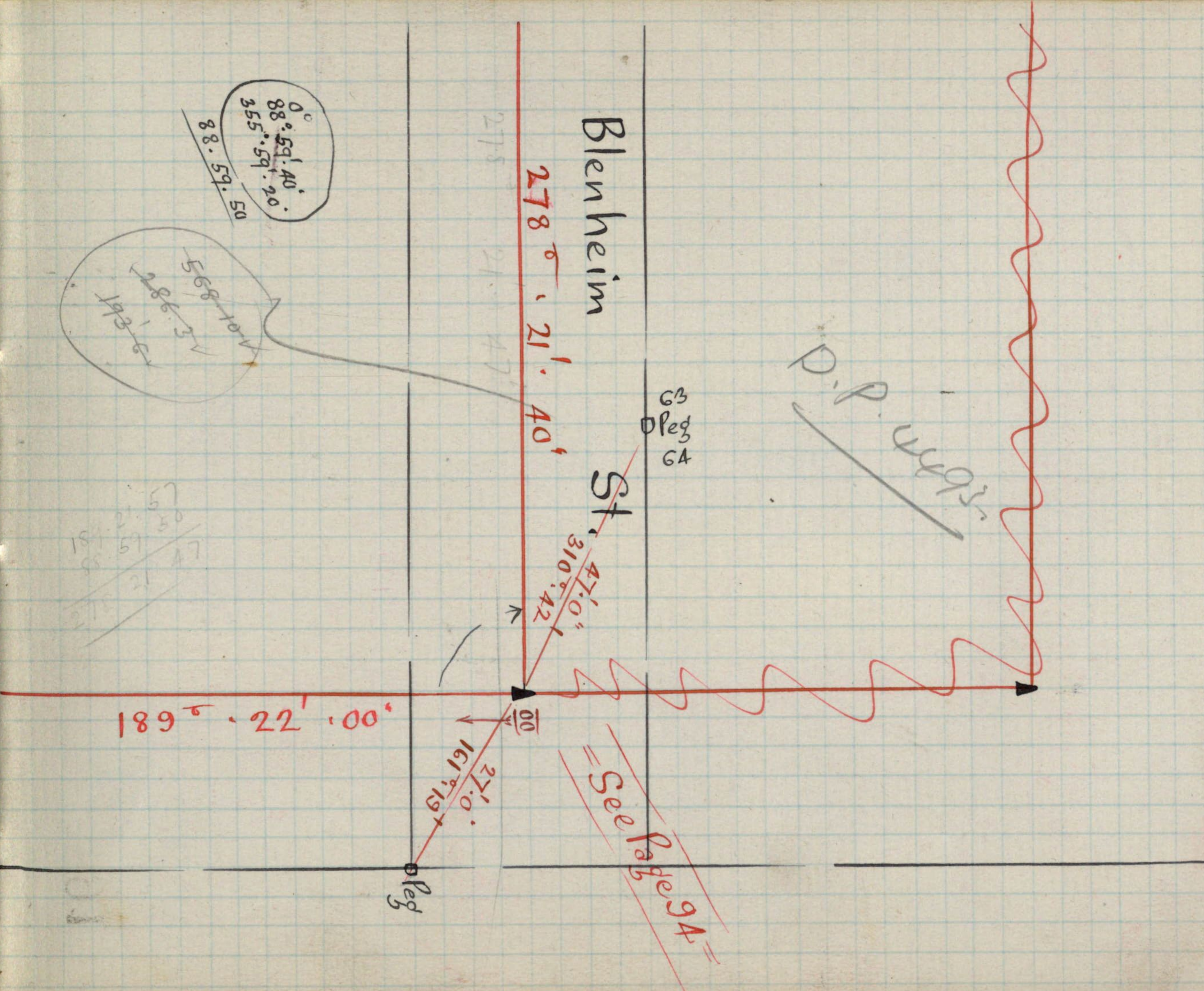
568.10
198.13
198.13

50
59
51
21
21
21

278

21

47



St

See Page 85

Marlborough

Blenheim

98° 21' 40"

0°
 $88^{\circ} 15' 20''$
 $353^{\circ} 2' 40''$
 $88^{\circ} 15' 40''$

See Page 95

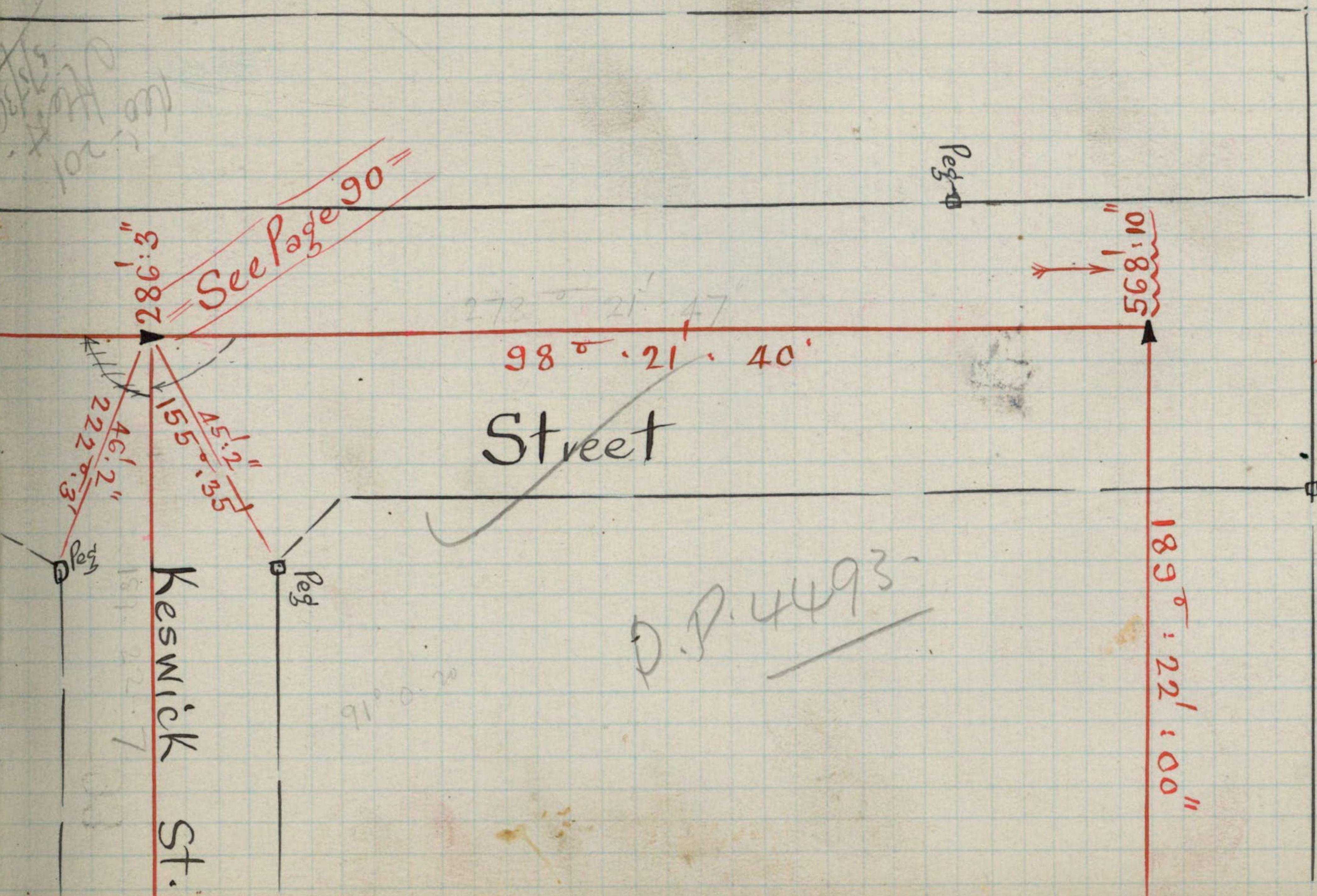
Peg 70
 Peg 69
 $29.5'$
 $321.236'$
 $35.5'$
 $62.7'$

Peg 36
 Peg 37
 $22.4'$
 $36.10'$
 $193.6'$

$98^{\circ} 21' 47''$
 $85^{\circ} 15' 40''$

D.P. 4493

91° 0' 20"
4° 1' 10"



See Page 90

See Page 92

D.P. 4493

North

Rd.

© M.M.B.
No. ~~927~~ 926

969' 0"

278° 50' 00"

810' 9"

See Page 74

190° 6' 20"

Peg

Peg

Peg

30' 54"
30' 10"
3' 19"

144' 3"
13' 4"
104° 37'

273° 25'
23' 4"
23' 4"

104° 37'

23' 4"

144' 3"

D.P. 4493

190° 6' 20"

See Page 93

95

Blenheim

St.