

North Rd.

St.

George

Brick Dwlg.
Chinese Market
Garden
See Page 84

See Page 56
76"

M.M.B.
No. 1538

1676.8

400'

1276.8"

9° 1' : 26' 55"
East

100' :: 23' .00"

See Page 99

160'-201
West
7/5/36

W. B. DWG.
See Page 96

546'0"

381'6"

Defy No. 26

56'0"
See 22

M.M.B.
No. 1540

9' :: 1' :: 55'

Boundary

Rd.

Chinese Market Garden

George St.

East Boundary Rd.

M.M.B. No. 1538

M.M.B. No. 1540

1676' 8"

546' 0"

55' 11' 26"

60' 6" / 155' 34"

100' 23' 00" / 100' 23' 00"

91° 21' 20" / 5' 24' 20"

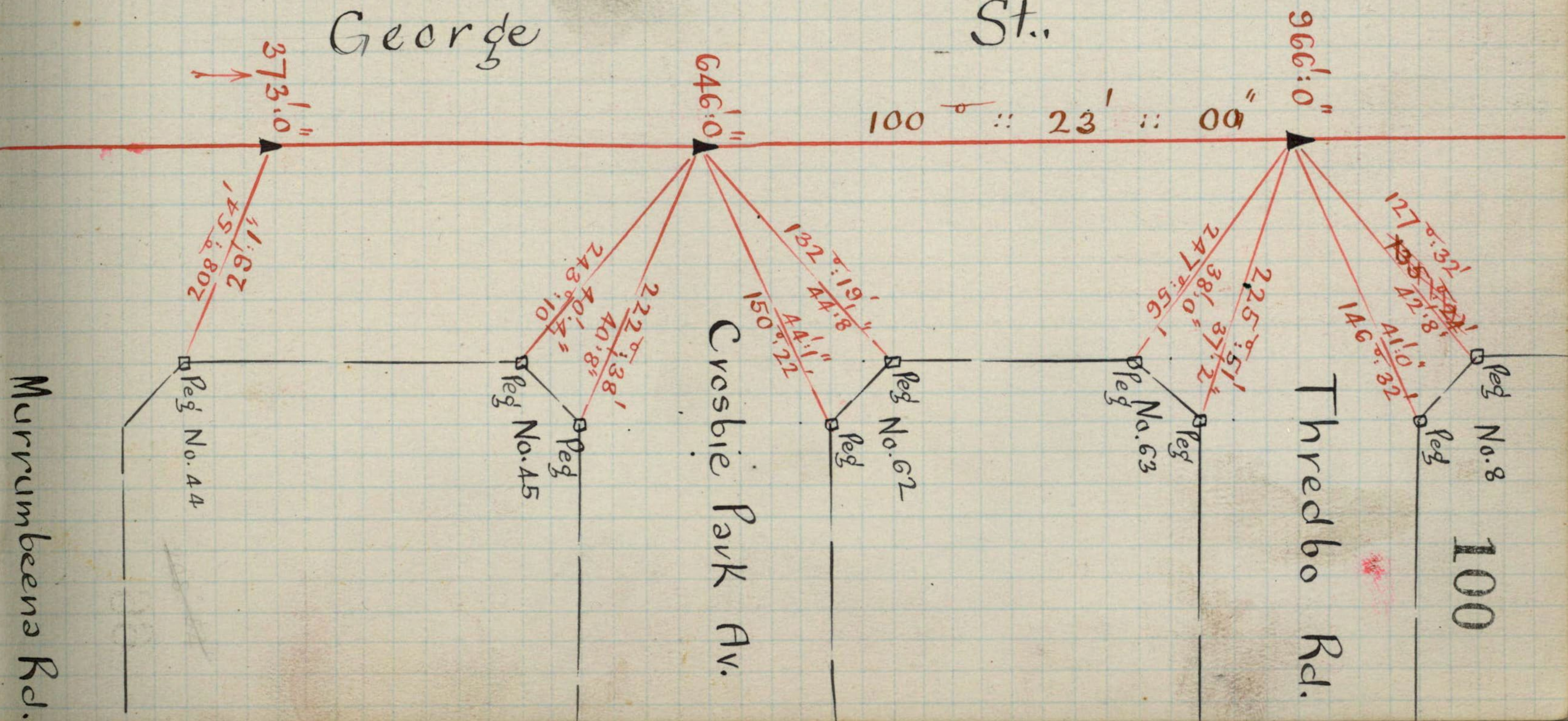
91° 21' 5"

See Pages 97 & 98

See also 7/15/36

Chinese Market Garden

Continued on page 101



Georgia

St.

Continued
from Page 100

Continued
on Page 102

0°
91° 2' 40"
364° 12' 20"
91° 3' 5"

1137' 0"

100° :: 23' :: 00"

1288' 0"

19' 5"
213° 38'

Peg

100' - 20'
7/5/30

191° :: 26' :: 00"

Crosbie Rd.

Continued
from Page 101

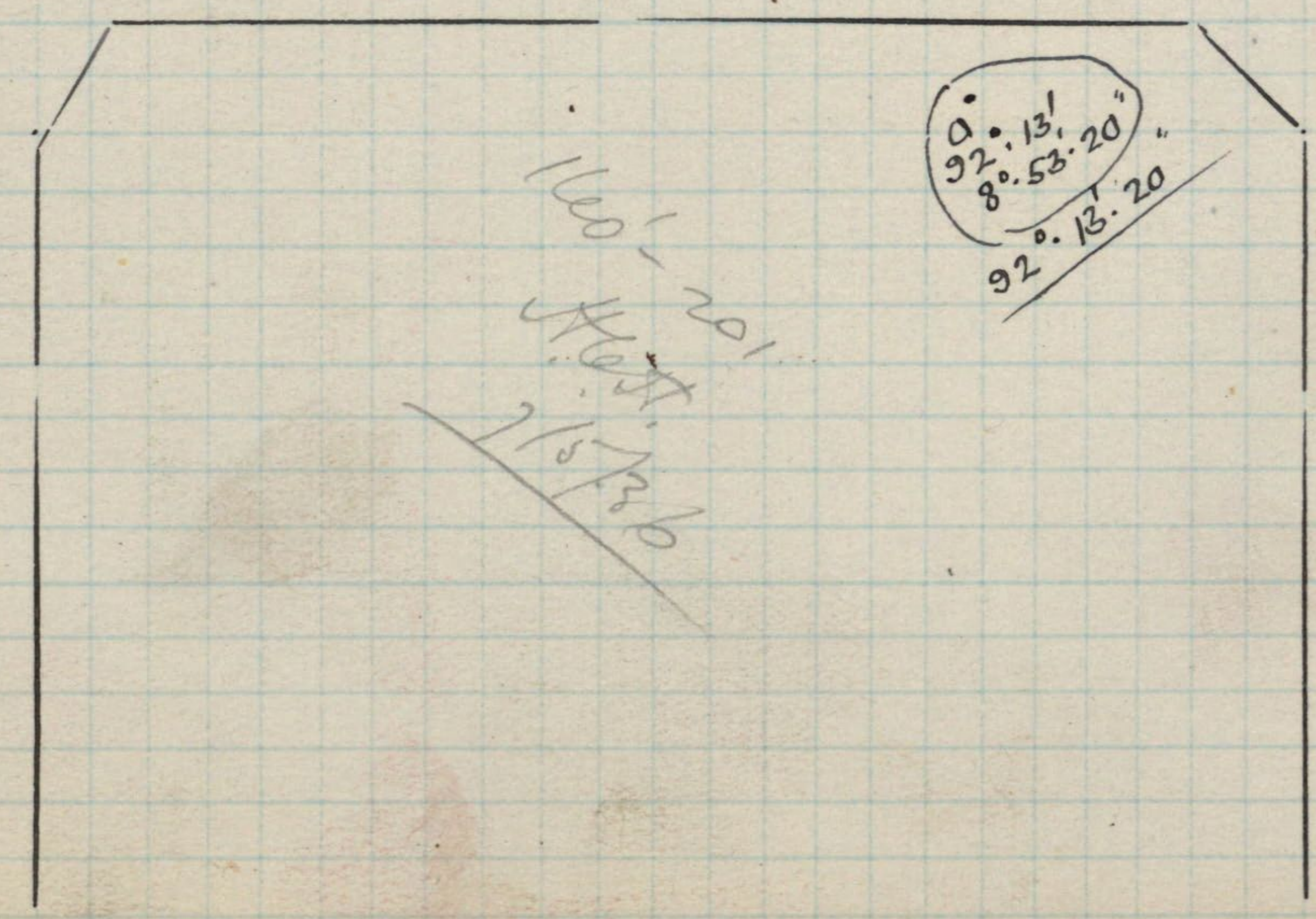
Continued
on Page 103

1288' 0"

191° 26' 00"

Crosbie Rd.

George St.
100° 23' 00"



92° 13'
8° 53' 20"
92° 13' 20"

R. O. W.

279° 12' 00"

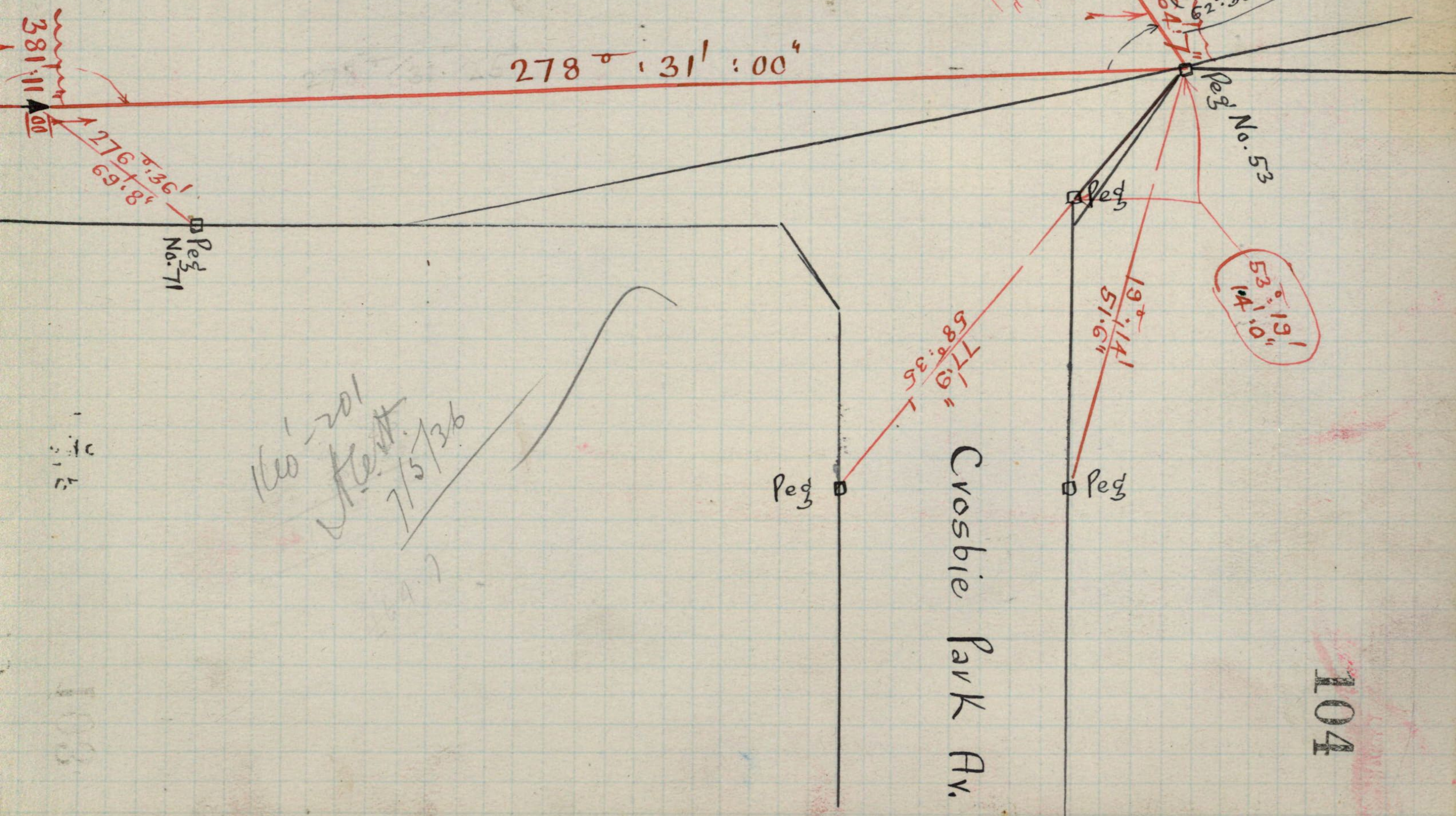
52° 18'
273° 6'
84° 52'
194° 54'

469' 1"

0°
 $179^\circ 18' 20''$
 $357^\circ 14' 40''$
 $179^\circ 18' 40''$

$99^\circ 12' 45''$
 $179^\circ 15' 40''$
 $278^\circ 31' 25''$

Continued =
 on page 105
 $161^\circ 10'$
 $175^\circ 21'$
 0°
 $62^\circ 38' 40''$
 $280^\circ 35' 40''$
 $62^\circ 38' 55''$



381.11
 $276^\circ 36'$
 $69.8'$
 Peg No. 71

$278^\circ 31' 00''$

Peg No. 53

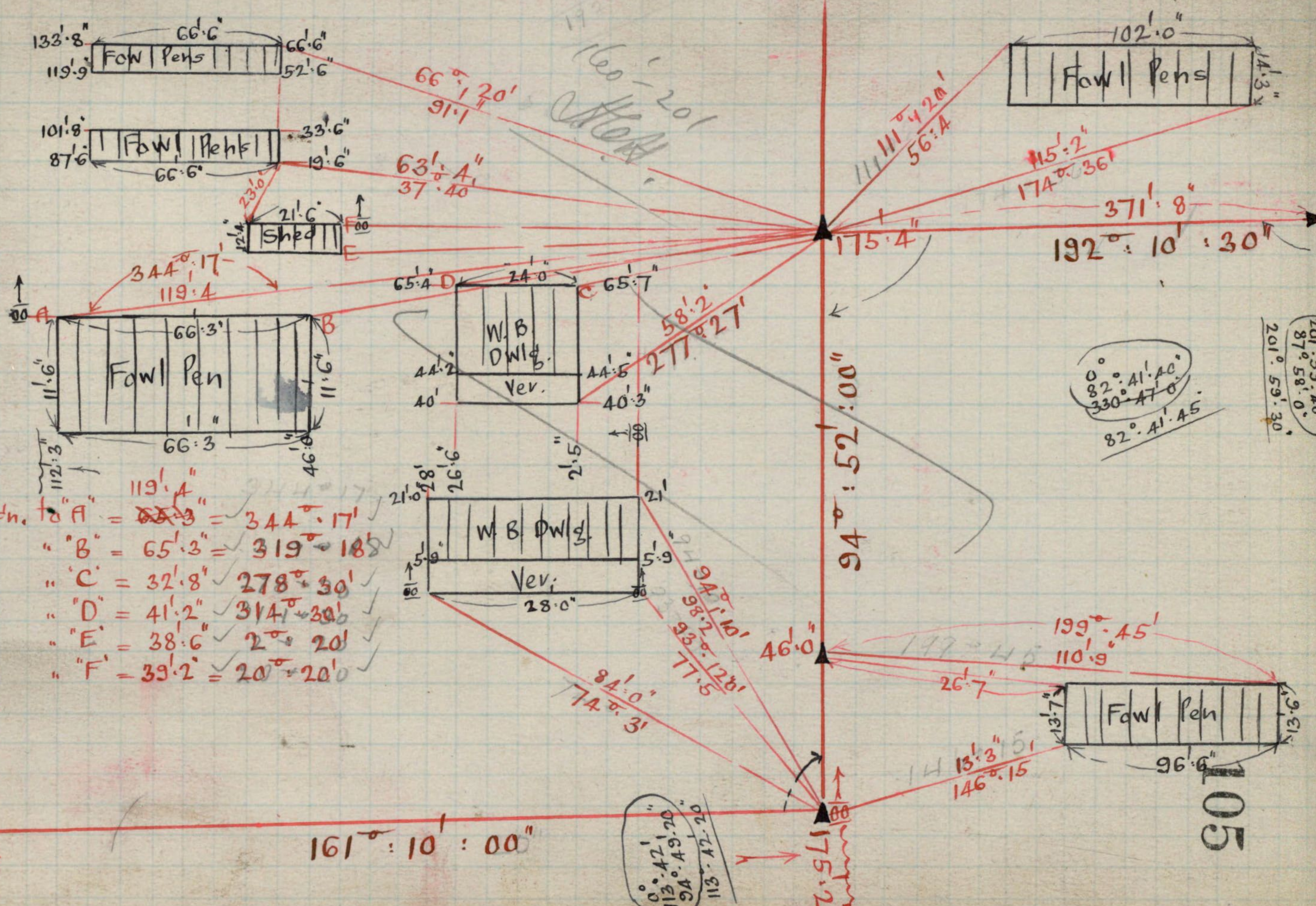
$53^\circ 19'$
 $104'$

160' 201
 102' 001
 7/5/36

Peg
 Crosbie Park Av.
 Peg

$58^\circ 35'$
 $77.9'$
 $19^\circ 14'$
 $51.6'$

278° 31' 00"



- ✓ Radn. to "A" = $119' \cdot 4'' = 344^\circ \cdot 17'$
- ✓ " " "B" = $65' \cdot 3'' = 319^\circ \cdot 18'$
- ✓ " " "C" = $32' \cdot 8'' = 278^\circ \cdot 30'$
- ✓ " " "D" = $41' \cdot 2'' = 314^\circ \cdot 30'$
- ✓ " " "E" = $38' \cdot 6'' = 2^\circ \cdot 20'$
- ✓ " " "F" = $39' \cdot 2'' = 20^\circ \cdot 20'$

Continued from Page 104

161° 10' 00"

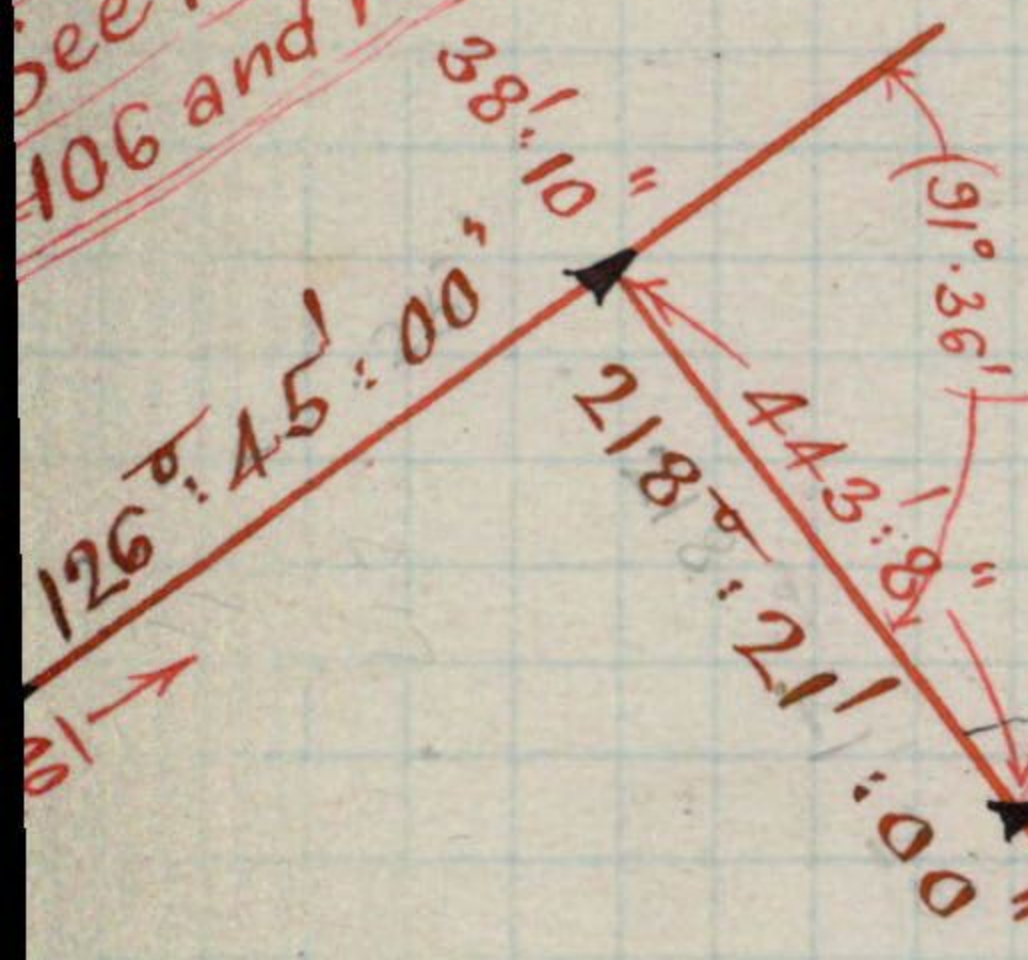
0° 42' 20"
113° 49' 20"
94° 47' 20"

0°
82° 41' 40"
330° 47' 0"
82° 41' 45"

201° 59' 40"
87° 58' 0"
201° 59' 30"

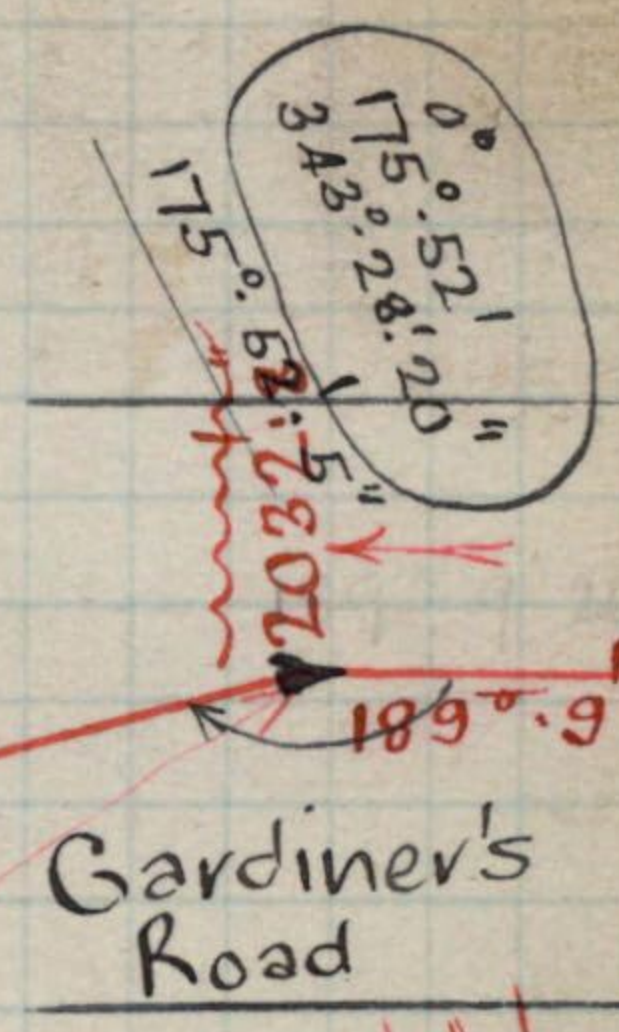
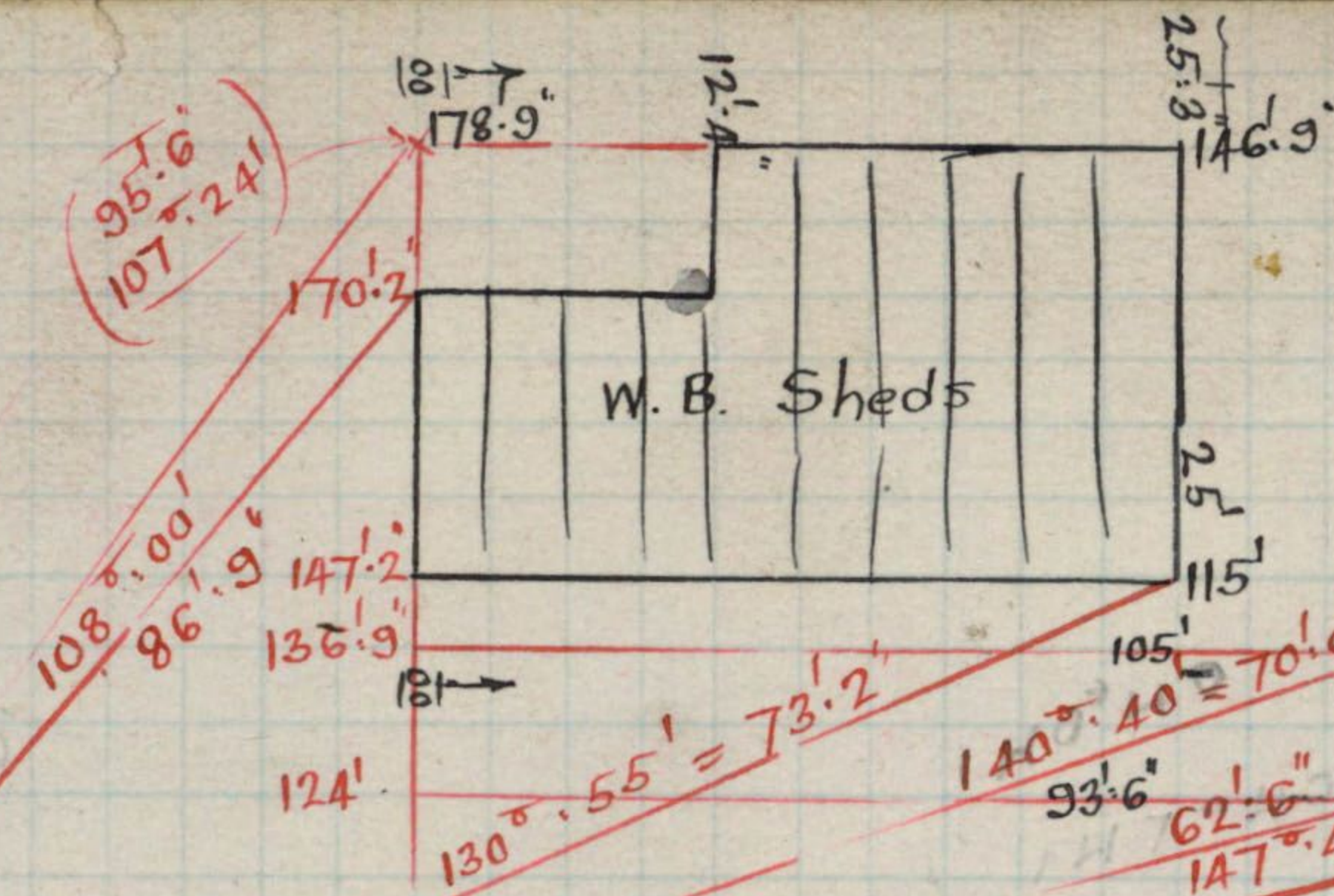
105

See Pages 106 and 107

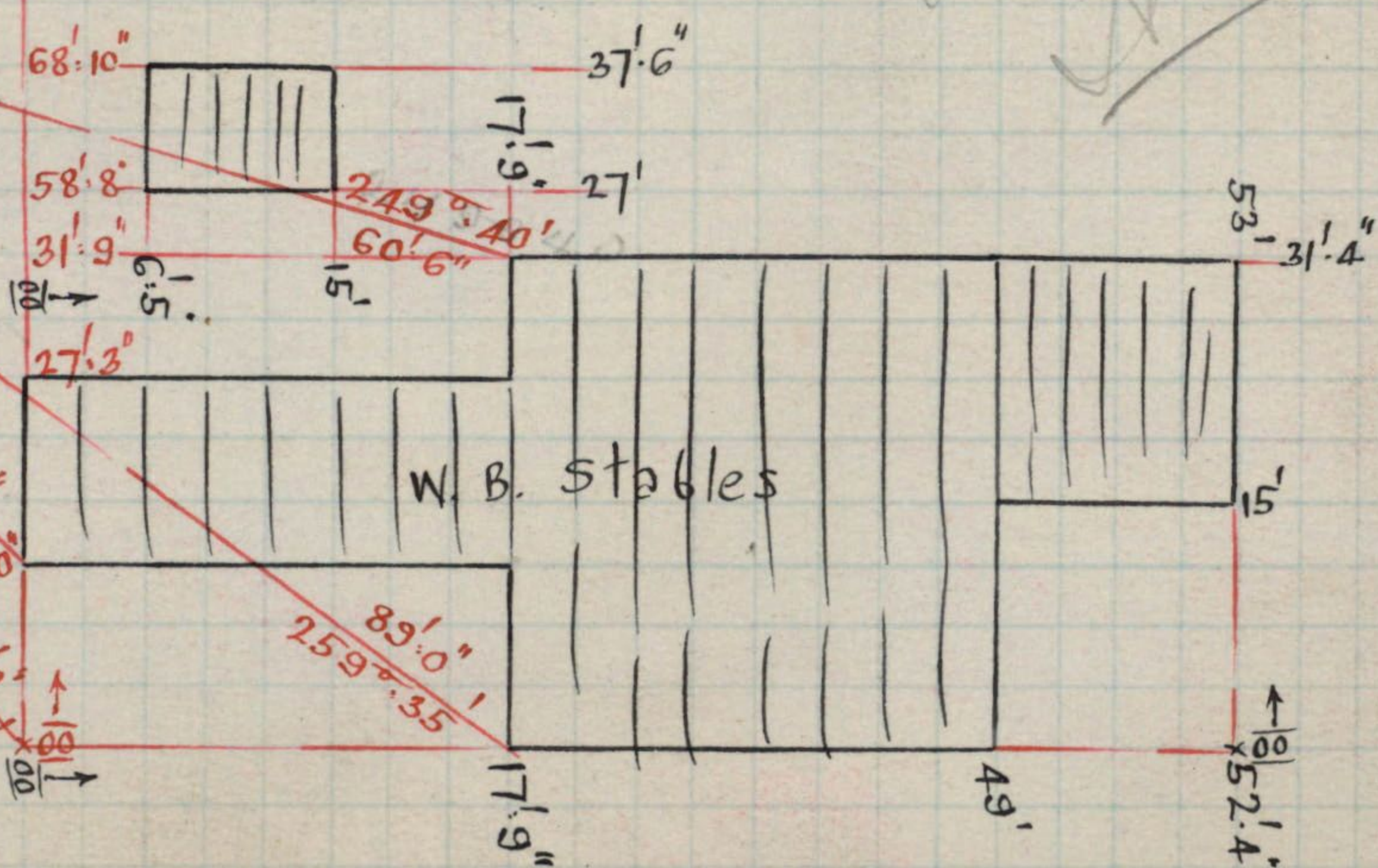


0°
 $146^{\circ} 40'$
 $226^{\circ} 40' 20''$
 $146^{\circ} 40' 5''$

95.6
 107.241



See Page 32



0°
 $88^\circ 13' 20''$
 $252^\circ 51' 40''$
 $88^\circ 12' 55''$

Peg No. 64

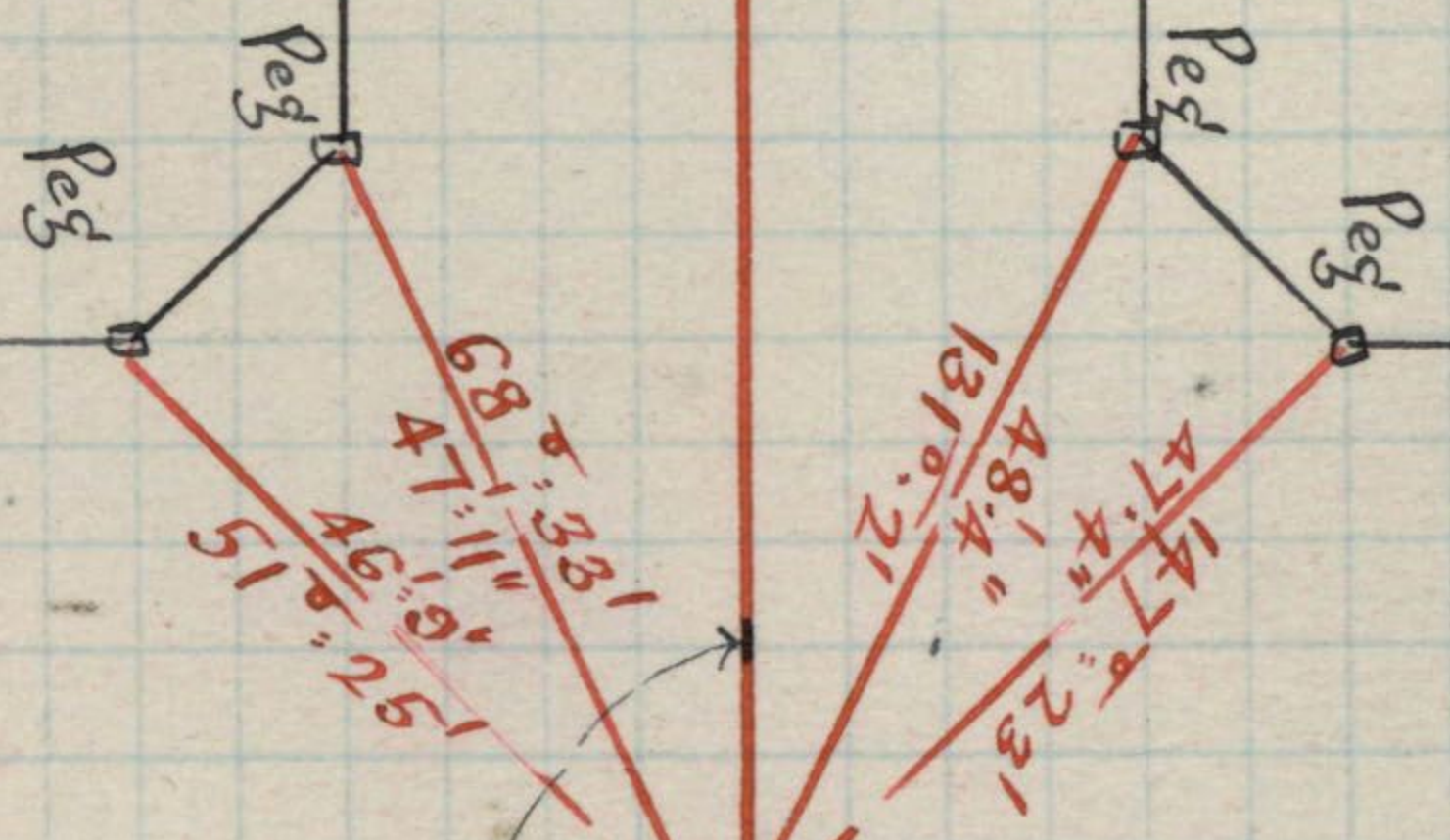
$112^\circ 24'$
 $32' 2''$

$1670' 10''$

See Page 51

Waratah St.

See Page 111



1518' 10"

Mackie

Rd.

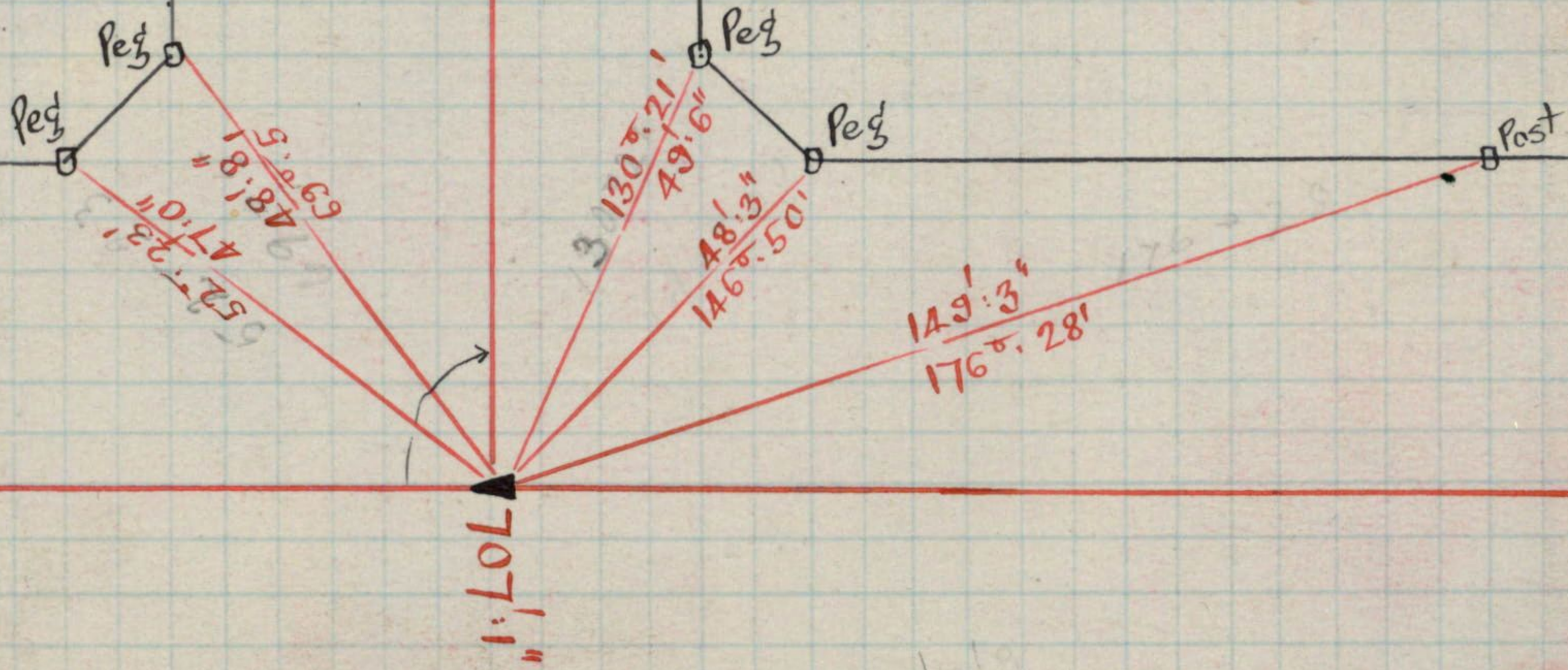
11/1/2022

See Pages 50, 51 and 114

Paloma St.

Mackie Rd.

Rd.



Mackie Rd.

8° 15' 00"

1518' 10"

See Page 51

See Page 109

Waratah

97° 18' 00"

313' 9"

St

53' 6"

137' 1"

31° 33'

Angle Peg

Peg

Brian St

Peg

58' 3"

216° 15'

Peg

165' 10"

57' 8"

151' 10"

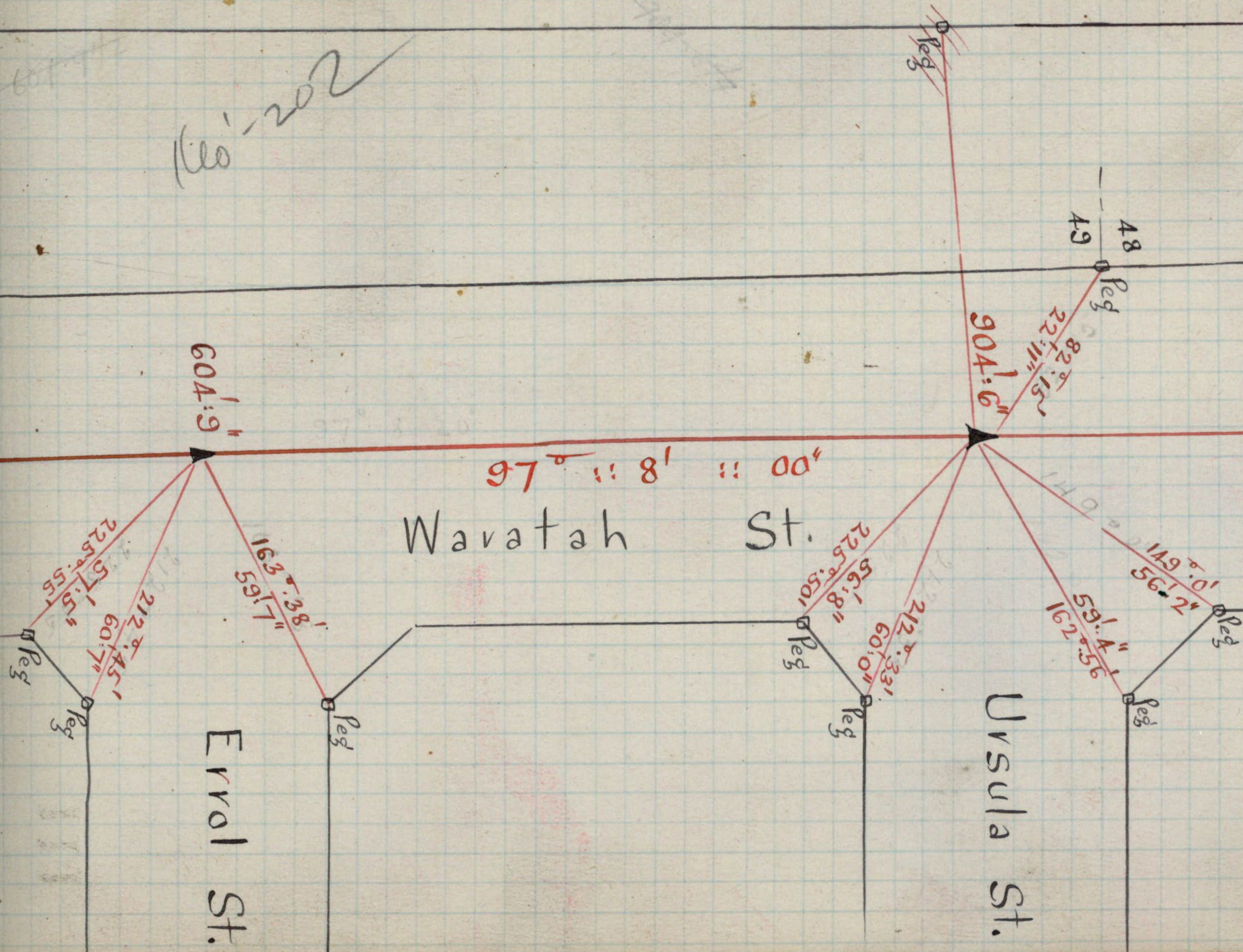
54' 4"

Peg

138° 8'

68' 10"

Peg



160-202

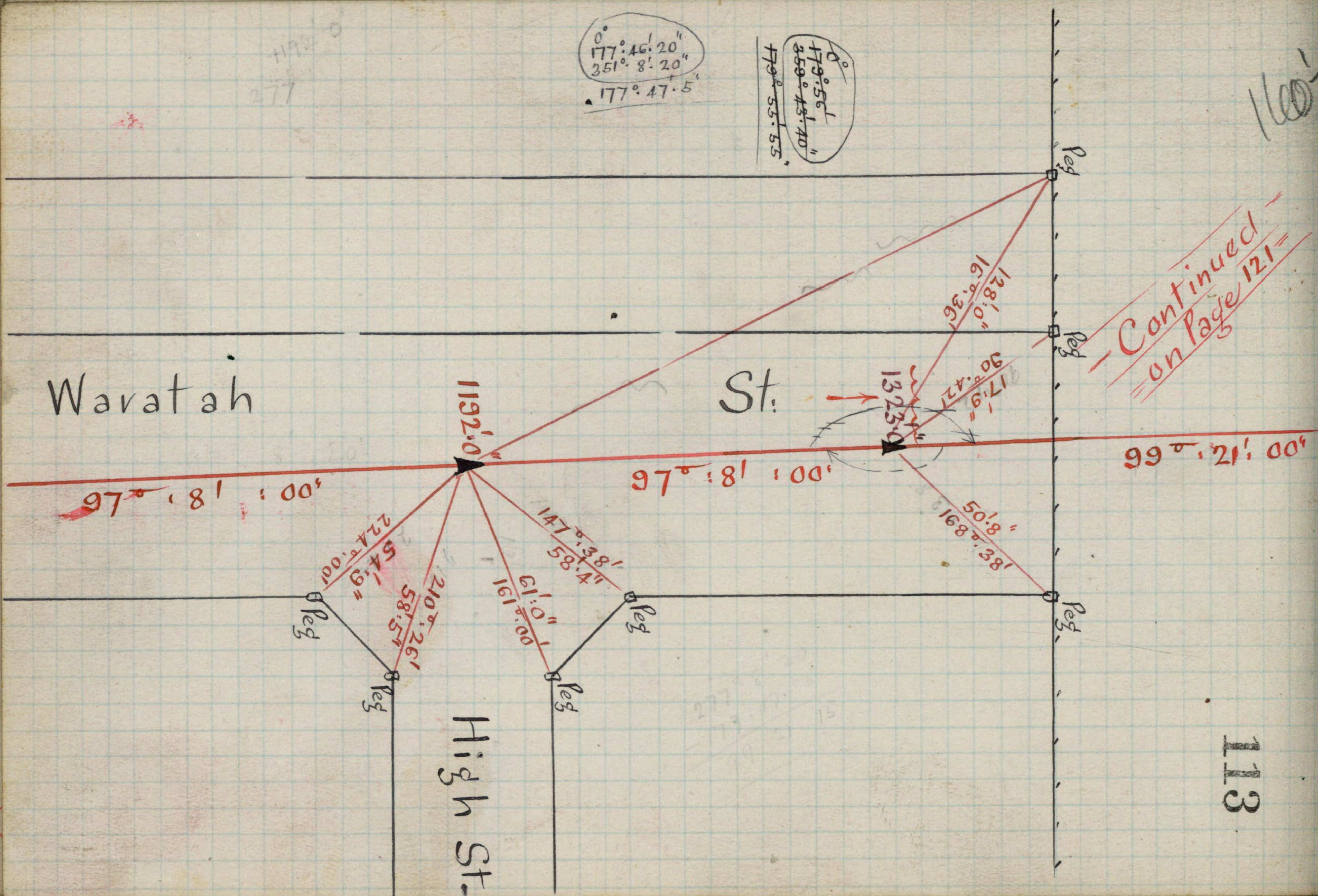
Waratah St.

Ursula St.

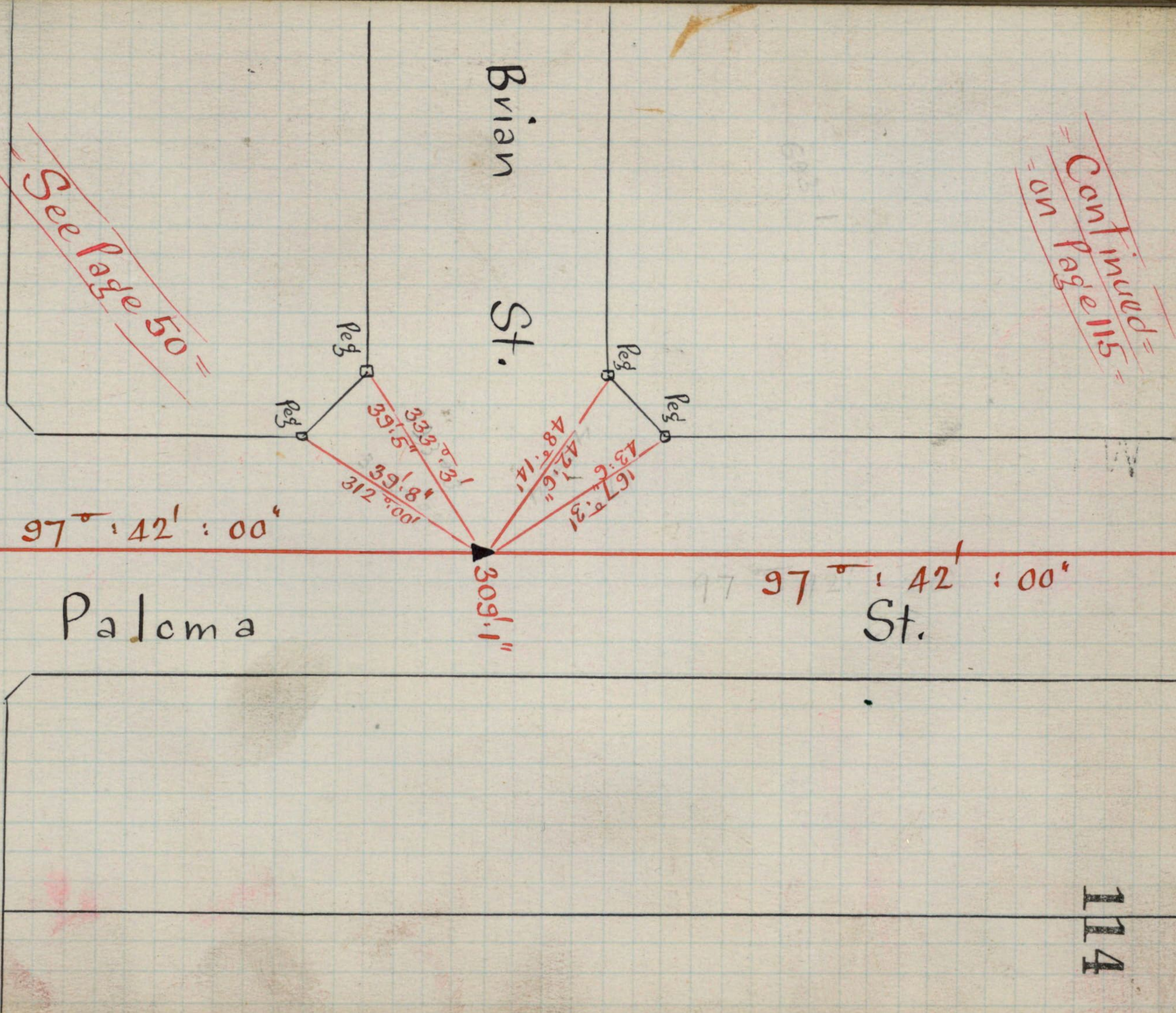
Errol St.

0°
 $177^\circ 46' 20''$
 $351^\circ 8' 20''$
 $177^\circ 47' 5''$

0°
 $179^\circ 56'$
 $359^\circ 43' 40''$
 $179^\circ 55' 55''$



Continued
on Page 115



Brian St.

See Page 50

$97^{\circ} 42' : 00''$

Paloma

$97^{\circ} 42' : 00''$
St.

$309.1''$

$8^{\circ} 56' : 00''$

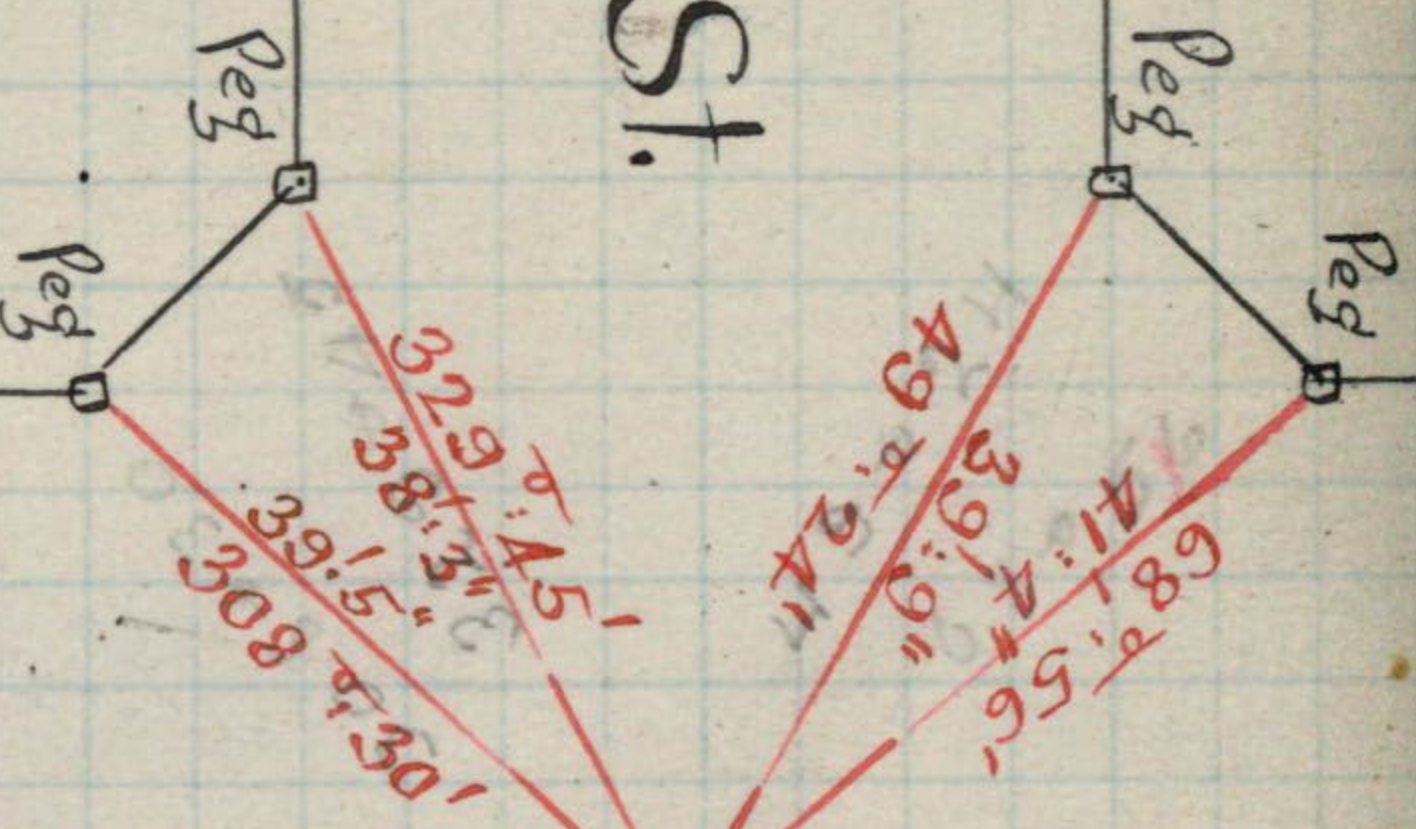
$707.1''$

Mackie

Rd.

903.5

Ursula St.

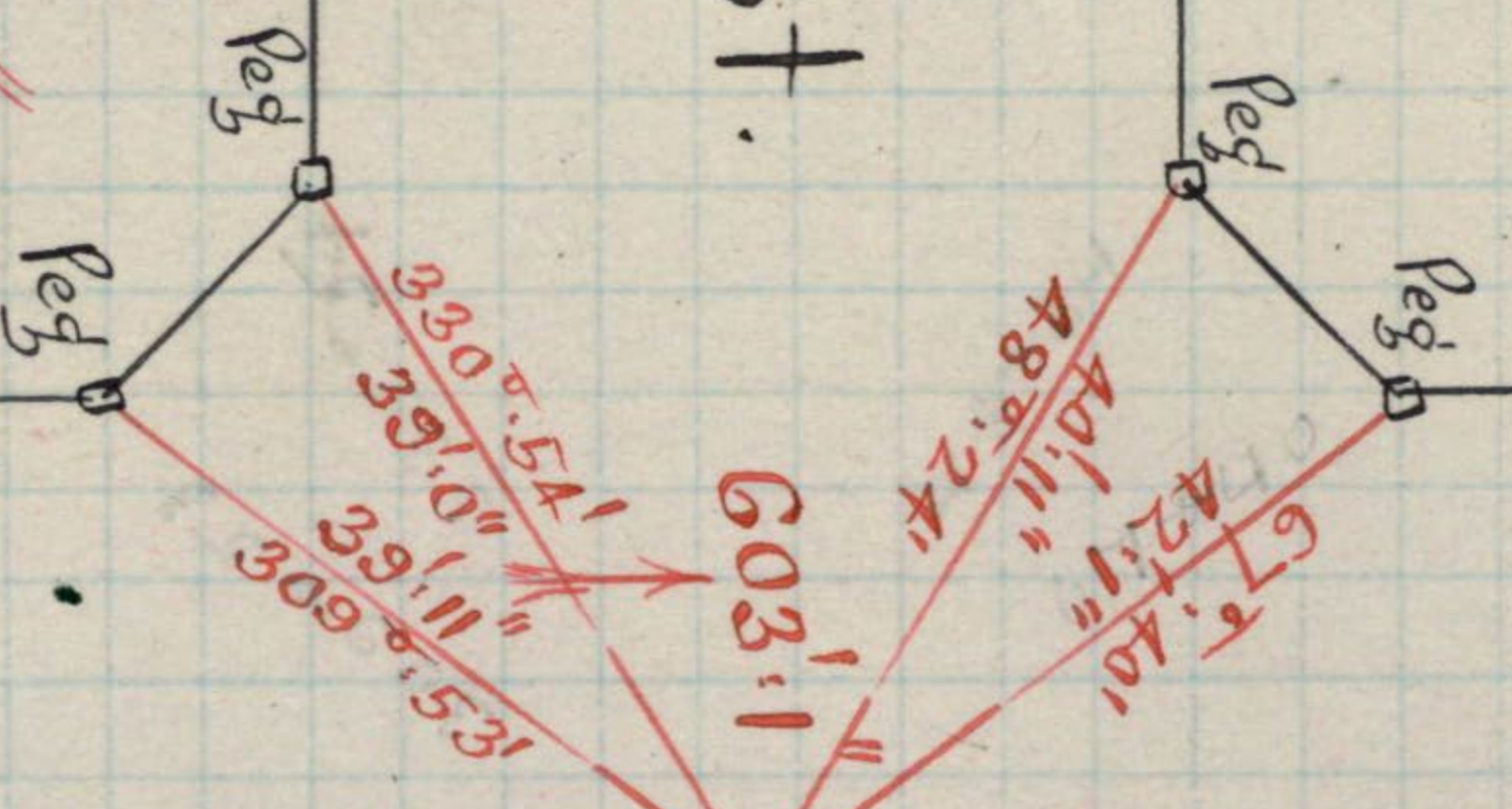


903' 3"

Paloma

97° 42' 00"

Evrol St.



603' 1"

12 Peg

154' 3"
203° 22'

Peg on Boundary

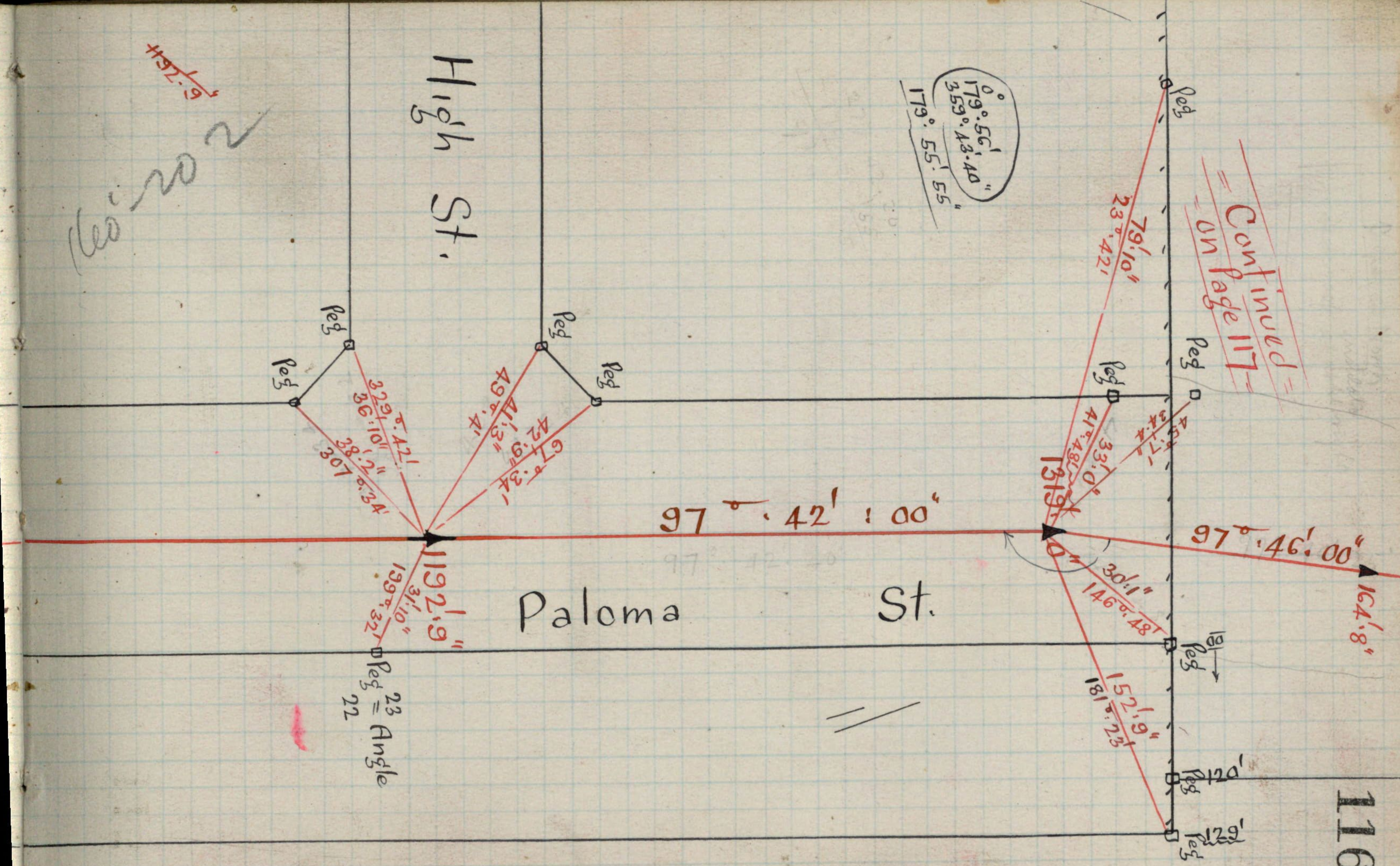
Continued from Page 114

Continued
on Page 117

$0^{\circ} 179' 56''$
 $359^{\circ} 43' 40''$
 $179^{\circ} 55' 55''$

High St.

Paloma St.

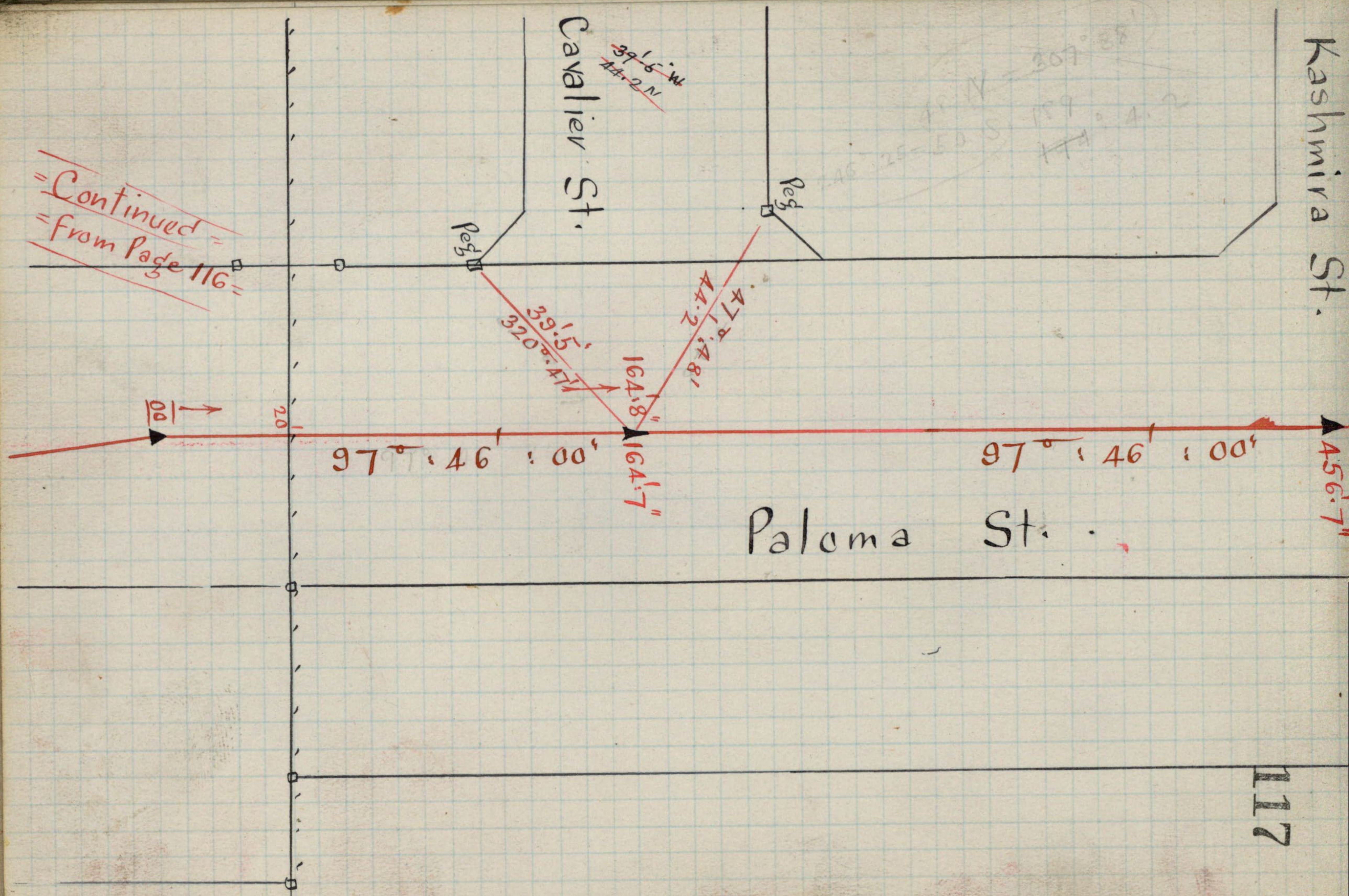


Kashmira St.

Cavalier St.

Paloma St.

Continued from Page 116



91° 18' 5"

~~160'-200"~~

1038.4"

Santarvam St.

Peg 3

Peg 3

Peg 3

332.1' : 003.2' : 40.3' : 39.1' : 10' : 317.3' : 35'

660' : 30' : 41.11' : 43.8'

97° 46' : 00"

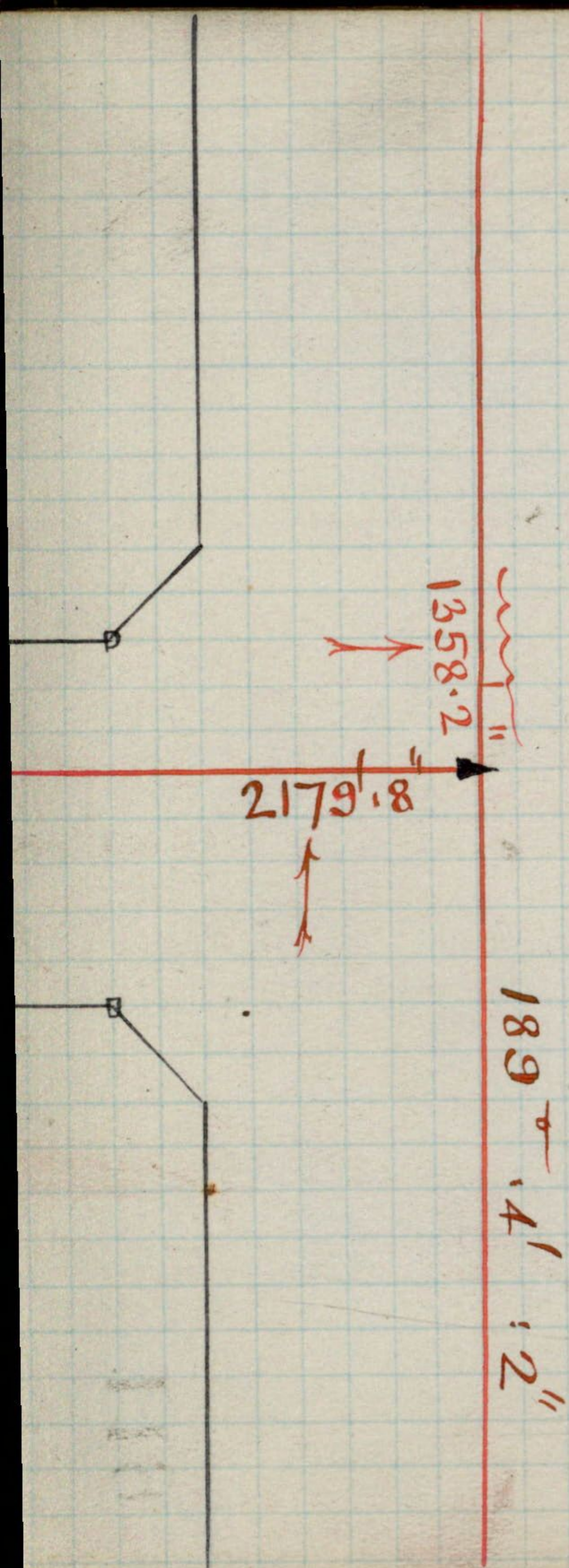
97° 46' : 00"

746.11"

Paloma

St.

DD 4379
88
2/7/31



Wavaga
See Page 140
Rd.

12' 1358

1038-49